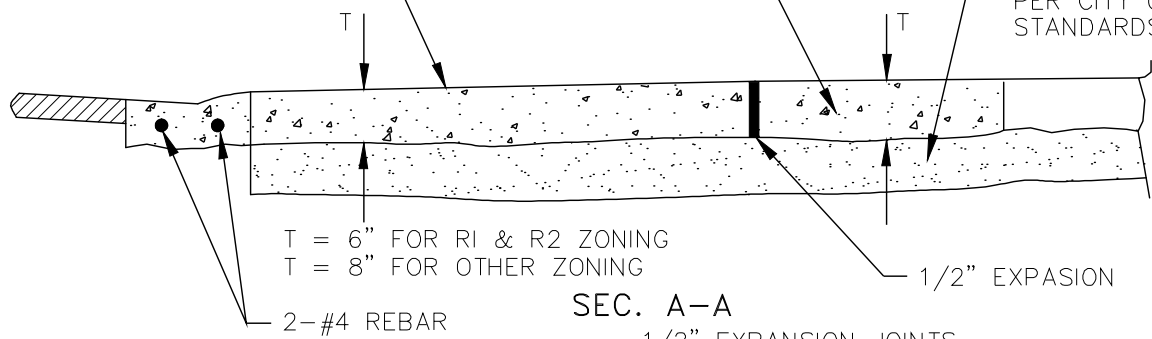


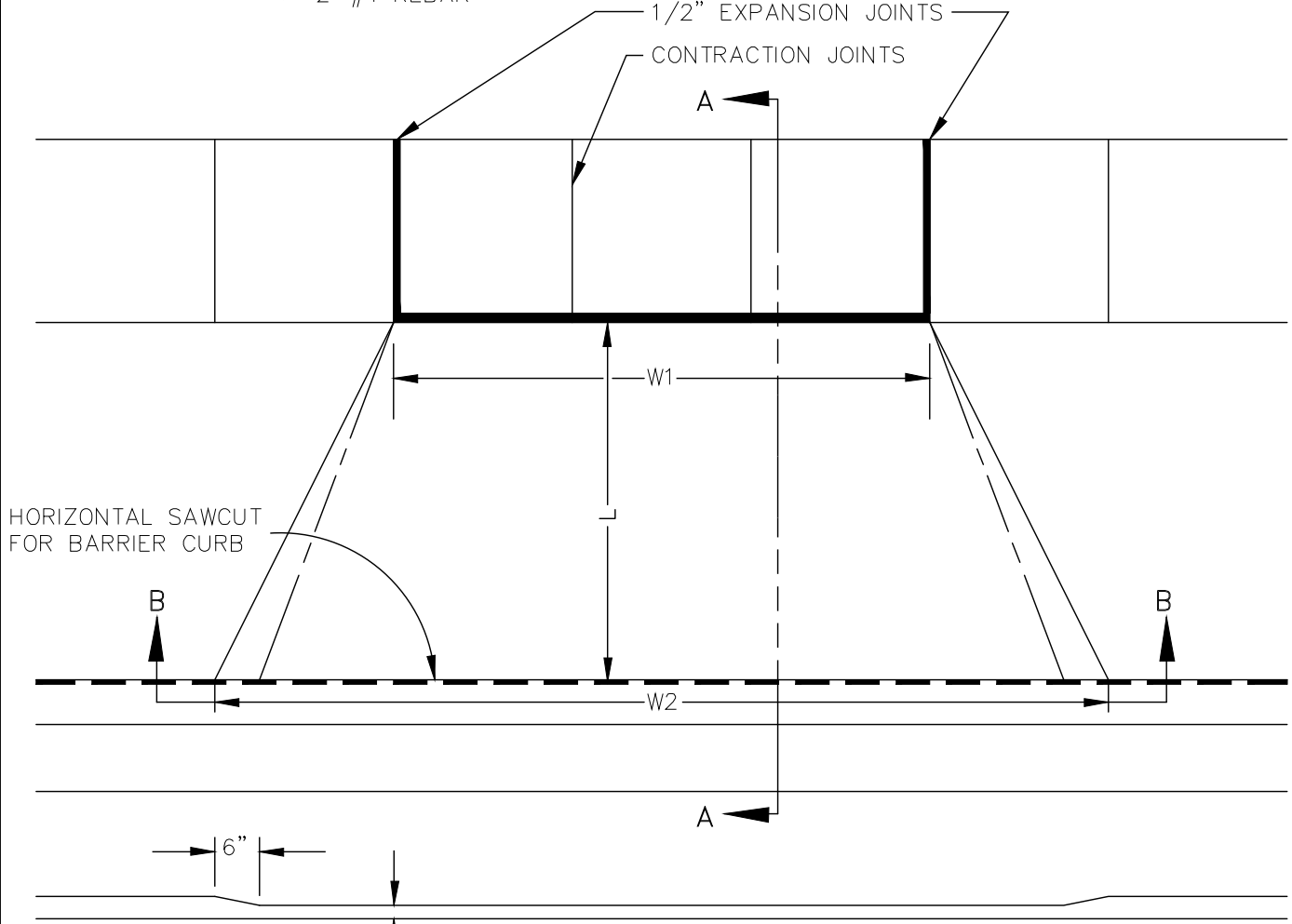
3/8" PER FOOT (3%) MIN.
13% MAX. SLOPE

1/4" PER FOOT (2%)

6" CLASS II GRANULAR
MATERIAL COMPACTED
TO 95% MAXIMUM DENSITY
PER CITY OF ANN ARBOR
STANDARDS.



SEC. A-A



SEC. B-B

NOTE: W1 (DRIVE OPENING WIDTH) AND
W2 (CURB CUT WIDTH)
AS REQUIRED FOR ZONING
BY CITY CODE.

MEASUREMENT OF AREA:
 $1/2 (W1+W2) \times L = \text{AREA}$

NOTE: DRIVE APPROACH TO BE
CLASS 'A' CONCRETE

SEC. B-B; S/W GRADE	1	DPF	CSS	1-31-94
REVISIONS	REV. NO.	DR. BY	CH. BY	DATE
PUBLIC SERVICES DEPARTMENT CITY OF ANN ARBOR				
TYPE 'L' DRIVE APPROACH (FOR USE ON STREETS WITH BARRIER OR MOUNTABLE CURB)				
DR. BY	DF/DCO	CH. BY	CSS/DF	DRAWING NO.
SCALE	NONE	DATE	11-6-92	SD-R-7
INCH	0 1			SHEET NO. ____ OF ____