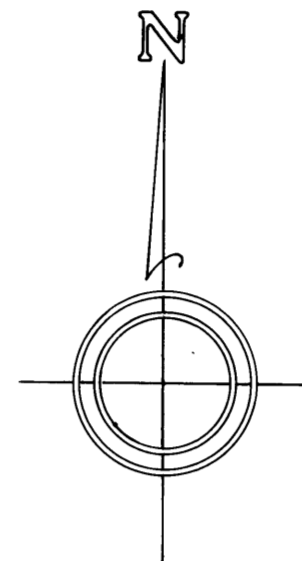
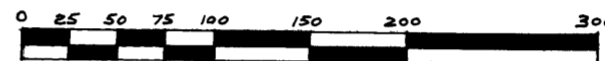


HUNTINGTON WOODS NO. 2

A SUBDIVISION OF PART OF THE S.E. 1/4
OF SECTION 27, T.2S., R.6E., ANN ARBOR
TOWNSHIP, WASHTENAW COUNTY, MICHIGAN



SCALE ~ 1"=100'

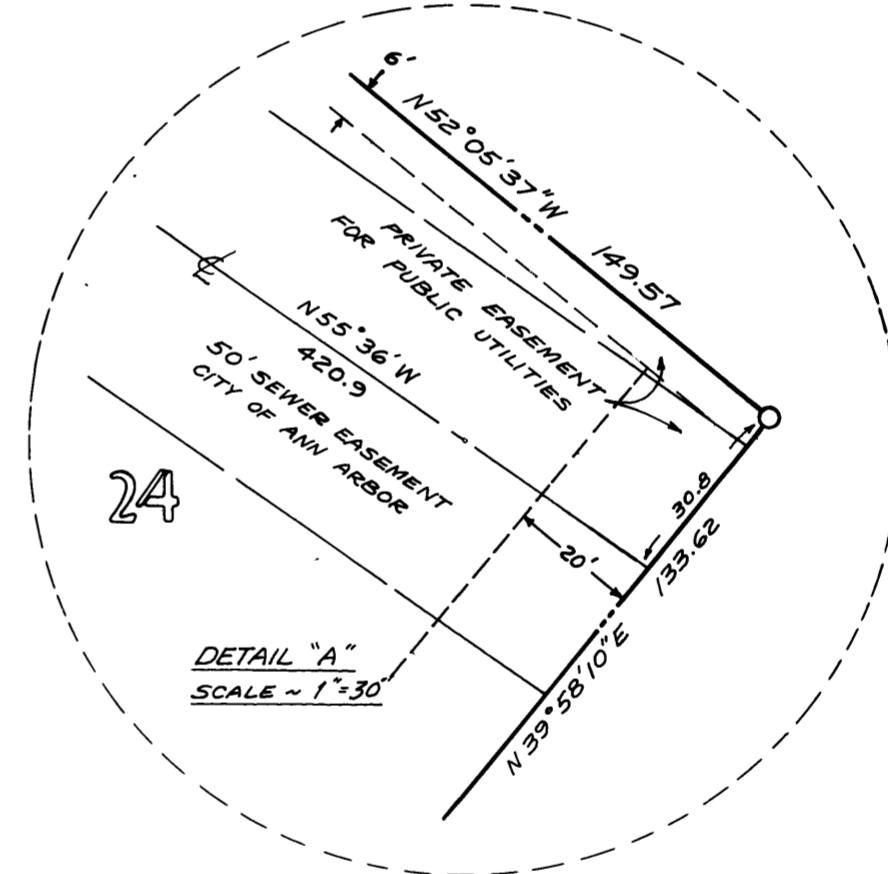


ALL DIMENSIONS ARE IN FEET & DECIMALS
CURVE DIMENSIONS ARE ALONG THE ARC.

CENTER OF SEC. 27
T.2S., R.6E., ANN ARBOR
TOWNSHIP, WASHTENAW CO.,
MICHIGAN
POINT OF BEGINNING

UNPLATTED

UNPLATTED



HUNTINGTON WOODS NO. 1

Oct 3 2 10 PM '63

HUNTINGTON WOODS NO. 2

PATRICIA NEWKIRK HARDY
REGISTERED DEEDS
WASHTENAW COUNTY, MICH.

A SUBDIVISION OF PART OF THE S.E. 1/4
OF SECTION 27, T.2 S., R.6 E., ANN ARBOR
TOWNSHIP, WASHTENAW COUNTY,
MICHIGAN

COUNTY TREASURER'S CERTIFICATE
Office of County Treasurer, Washtenaw County.

I hereby certify that there are no tax liens or titles held by the State on the lands described herein, and that there are no tax liens or titles held by individuals on said lands for the five years preceding the 14th day of August, 1963, and that the taxes for said period of five years are all paid, as shown by the records of this office.

DEDICATION

KNOW ALL MEN BY THESE PRESENTS, that we, AMERICAN TITLE COMPANY OF WASHTENAW, a Michigan Corporation, by John S. Dobson President, John S. Dobson Secretary, and NEWTON REALTY CO., a Michigan Corporation, by Maynard H. Newton President, and James P. Newton Treasurer, as Proprietors, have caused the land embraced in the annexed plat to be surveyed, laid out and platted to be known as HUNTINGTON WOODS NO. 2, A Subdivision of Part of the S.E. 1/4 of Section 27, T.2 S., R.6 E., Ann Arbor Township, Washtenaw County, Michigan, and that the streets and roads as shown on said plat are hereby dedicated to the use of the public and the easements as indicated on said plat are not dedicated to the public but reserved for public utilities and any other use designated hereon and no permanent structures are to be located within said easement.

This certificate does not apply to taxes, if any, now in process of collection by township, city or village collecting officers.

Sylvester A. Leonard
Sylvester A. Leonard
County Treasurer.

CERTIFICATE OF APPROVAL BY BOARD OF COUNTY ROAD COMMISSIONERS.

This plat has been examined and was approved on the 21st day of Aug., 1963 by the Washtenaw County Board of Road Commissioners.

Raymond L. Koch
Chairman Raymond L. Koch
Don A. Weir
Member Don A. Weir

Member

Signed in the presence of:

John S. Dobson
Witness John S. Dobson
John S. Dobson
Witness John S. Dobson

AMERICAN TITLE COMPANY OF WASHTENAW

John S. Dobson
President John S. Dobson
John S. Dobson
Secretary John S. Dobson

NEWTON REALTY CO.

Maynard H. Newton
President Maynard H. Newton
James P. Newton
Treasurer

John S. Dobson
Witness John S. Dobson

John S. Dobson
Witness John S. Dobson

John S. Dobson
Witness John S. Dobson

John S. Dobson
Witness John S. Dobson

APPROVAL BY COUNTY PLANNING COMMISSION

This plat was approved by the Washtenaw County Metropolitan Planning Commission at a Meeting held on the 14 day of August, 1963.

William G. Hayes
William G. Hayes, Chairman
Robert D. Carpenter
Robert D. Carpenter, Director

ACKNOWLEDGMENT

STATE OF MICHIGAN } ss
County of Washtenaw }

On this 3rd day of July A.D., 1963, before me, Frances E. Mitchell a Notary Public in and for said County, appeared Mark W. Griffin and John S. Dobson to me personally known, who being each by me duly sworn did say they are the President and Secretary respectively of American Title Company of Washtenaw, a Michigan Corporation, and that the seal affixed to said instrument is the corporate seal of said corporation by authority of its Board of Directors and the said Mark W. Griffin and John S. Dobson acknowledged said instrument to be the free act and deed of said corporation.

Frances E. Mitchell
Notary Public Washtenaw County, Mich.

My Commission expires OCTOBER 23, 1965 FRANCES E. MITCHELL

CERTIFICATE OF MUNICIPAL APPROVAL

This plat was approved by the Township Board of Ann Arbor Township at a Meeting held August 27, 1963, and is in compliance with Section 19-A and the width of lots is in compliance with requirements of Section 30, Act 172 of 1929, as amended.

Laurence J. Frederick
Clerk Laurence J. Frederick

ACKNOWLEDGMENT

STATE OF MICHIGAN } ss
County of Washtenaw }

On this 5th day of July A.D., 1963, before me, a Notary Public in and for said County, appeared Maynard H. Newton and James P. Newton, to me personally known, who being each by me duly sworn did say they are the President and Treasurer respectively of Newton Realty Co., a Michigan Corporation, and that the seal affixed to said instrument is the corporate seal of said corporation by authority of its Board of Directors and the said Maynard H. Newton and James P. Newton acknowledged said instrument to be the free act and deed of said corporation.

Maynard H. Newton
Notary Public Washtenaw Co., Mich.

My Commission expires 1-10-64

APPROVAL BY COUNTY PLAT BOARD

This plat was approved on the 13th day of Sept 1963 by the Washtenaw County Plat Board.

Patricia Newkirk Hardy
Patricia Newkirk Hardy
(County Register of Deeds)
John H. Flook
John H. Flook
(County Drain Commissioner)

J. Martin Rempp
J. Martin Rempp
(Auditor)
John P. Cook
John P. Cook
(Auditor)

Herbert G. Loeffler
Herbert G. Loeffler
(Auditor)

DESCRIPTION OF LAND PLATTED

The land embraced in the annexed plat of HUNTINGTON WOODS NO. 2 a subdivision of part of the S.E. 1/4 of Section 27, T.2 S., R.6 E., Ann Arbor Township, Washtenaw County, Michigan, is described as follows: Beginning at the center of Section 27, T.2 S., R.6 E., Ann Arbor Township, Washtenaw Co., Mich., and running thence 300°52'00"W along the N & S 1/4 section line of Section 27 300.64 ft.; thence N89°02'30"W 300 ft.; thence S34°50'00"E 326.74 ft.; thence N14°03'18"E 53.87 ft.; thence N40°13'18"E 236.34 ft.; thence S52°12'20"W 232.88 ft.; thence N57°17'40"E 66 ft.; thence 10.74 ft. along the arc of a 230.10 ft. radius circular curve concave Southwesterly through a central angle of 2°40'30", the long chord of which bears S51°22'05"E 10.74 ft.; thence N39°58'10"W 133.62 ft.; thence N52°05'37"W 149.57 ft.; thence 991.25 ft. along the arc of a 3189.40 ft. radius circular curve concave Northeasterly through a central angle of 17°48'26", the long chord of which bears N45°19'30"W 537.27 ft.; thence N37°08'24"W 134.86 ft. to the E & W 1/4 line of Section 27; thence S60°10'25"W 84.86 ft. along said E & W 1/4 section line to the Point of Beginning. Containing 15 lots numbered 24 through 36 consecutively, and one outlet designated outlet A.

SURVEYOR'S CERTIFICATE

I hereby certify that the plat hereon delineated is a correct one and that permanent metal monuments consisting of bars not less than one-half inch in diameter and 36 inches in length, or shorter bars of not less than one-half inch in diameter lapped over each other at least 6 inches with an overall length of not less than 36 inches, encased in a concrete cylinder at least 4 inches in diameter and 36 inches in depth have been placed at points marked (a) as thereon shown at all angles in the boundaries of the land platted, at all intersections of streets, intersections of alleys, or of streets and alleys, and at the intersections of streets and alleys with the boundaries of the plat as shown on said plat.

Murray J. Knowles, Jr.
Murray J. Knowles, Jr.
Reg. Civil Engineer & Surveyor #5342

RECEIVED FOR RECORD
Oct 3 2 10 PM '63
PATRICIA NEWKIRK HARDY
REGISTERED DEEDS
WASHTENAW COUNTY, MICH.
Filed 17 of State Page 2