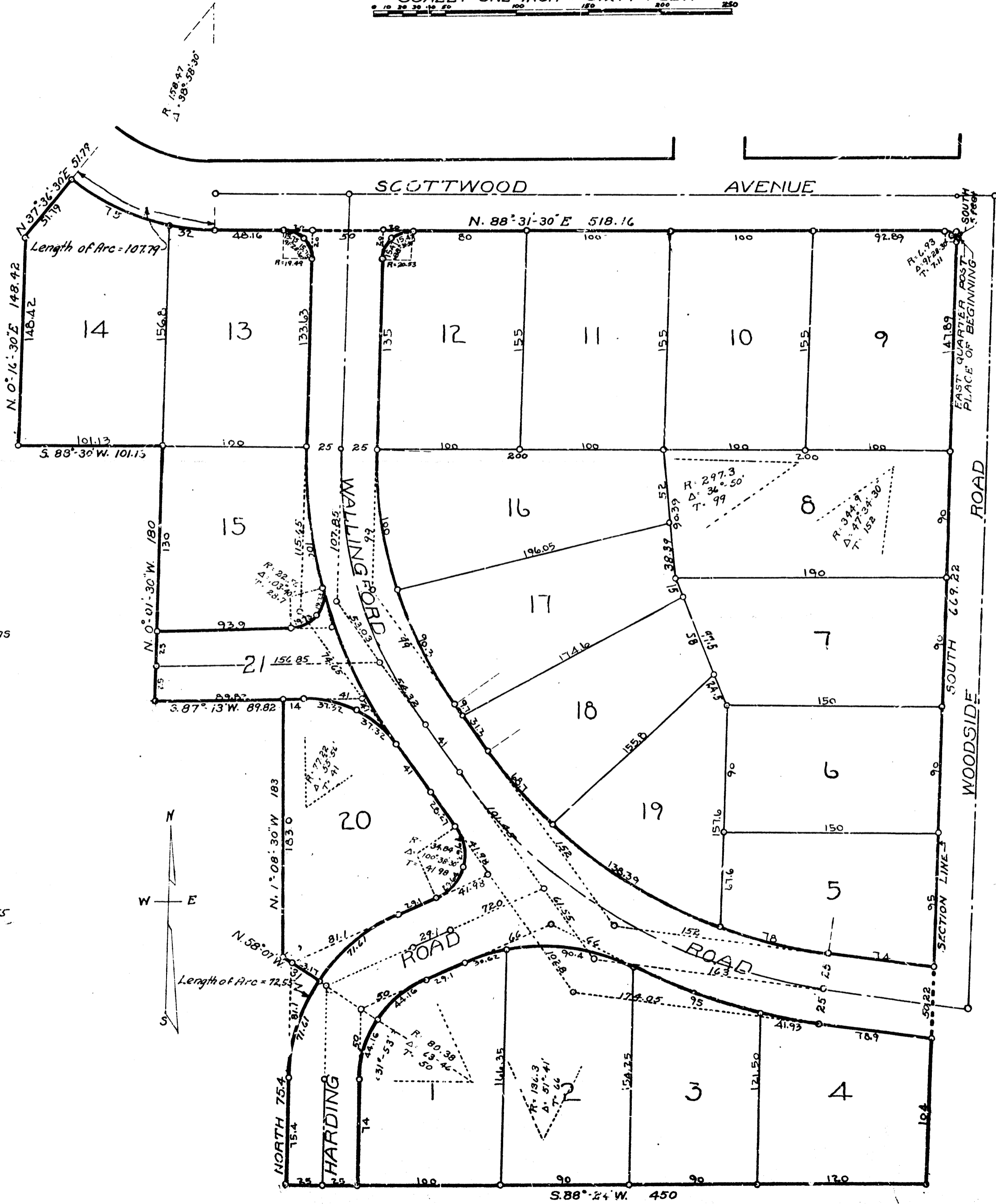


Doc 12-1923
J. L. Hume

M. A. IVES SUBDIVISION

A SUBDIVISION OF PART OF THE
 EAST ONE-HALF OF SECTION 33,
 IN THE CITY OF ANN ARBOR,
 WASHTENAW COUNTY, MICHIGAN.

SCALE: ONE INCH = SIXTY FEET.



CERTIFICATE OF APPROVAL
 BY THE BOARD OF COUNTY AUDITORS
 This plat was approved by the Board of County
 Auditors of Washtenaw County, Michigan, this
 5 day of October 1923.

A. L. Brown Chairman
Willis McFoster
Edward J. Brown

CERTIFICATE OF APPROVAL
 BY THE BOARD OF PUBLIC WORKS.
 This plat was approved by the Board of
 Public Works of the City of Ann Arbor, Washtenaw
 County, Michigan, at a meeting held the third day of
 October, 1923.

J. G. Reynolds Clerk

SURVEYOR'S CERTIFICATE
 I hereby certify, that the plat hereon delineated
 is a correct one, and that permanent monuments
 consisting of iron pipes, one-half inch or more in diameter
 and eighteen inches or more in length have been planted
 at points marked thus o as thereon shown at all angles
 in the boundaries of the land platted and at all intersections
 of streets.

H. S. Stowell
 Registered Civil Engineer

DESCRIPTION
 The land embraced in the annexed plat of
 "M. A. IVES SUBDIVISION," a subdivision of part
 of the east one-half of Section 33 in the
 City of Ann Arbor, Washtenaw County, Michigan is
 described as follows:— Commencing at the east
 quarter post of said Section 33, Town 2 South, Range
 4 East, Washtenaw County, Michigan; thence south along
 the east line of Section 33, 46.22 feet; thence S. 88° 24' W.
 450 feet, thence north, 75.5 feet to a point of curvature;
 thence to the right in the arc of a circular curve of
 radius of 130.38, thru a central angle of 31° 53', a distance of 72.55
 feet, to the external of said curve; thence N. 58° 07' W, 31 feet;
 thence N. 1° 08' 30" W, 183 feet; thence S. 87° 13' W 89.82 feet;
 thence N. 0° 01' 30" W, 180 feet; thence S. 88° 30' W, 101.13 feet;
 thence N. 0° 16' 30" E, 148.42 feet; thence N. 37° 36' 30" E,
 51.79 feet to a point of curvature; thence southeasterly
 to the left in the arc of a circular curve of radius
 158.47 feet through a central angle of 38° 58' 30" to
 the point of tangency, a distance of 101.79 feet; thence
 N. 88° 31' 30" E, 518.16 feet; thence south 5 feet to the place
 of beginning.

DEDICATION
 KNOW ALL MEN BY THESE PRESENTS,
 That we Marvin A. Ives and Virginia R. Ives, his wife, as proprietors, have caused
 the land embraced in the annexed plat to
 be surveyed, laid out and platted, to be known
 as M. A. Ives Subdivision a subdivision of
 part of the east one-half of Section
 33, in the City of Ann Arbor, Washtenaw
 County, Michigan, and that the streets as
 shown on said plat are hereby dedicated
 to the use of the public.
 Signed and Sealed in the presence of
John R. Ives
Marvin A. Ives
Virginia R. Ives

STATE OF MICHIGAN } ss.
 County of Washtenaw }
 On this 12 day of August 1923, before
 me, a Notary Public in and for said county,
 personally came the above named Marvin
 A. Ives and Virginia R. Ives, his wife, known
 to me to be the persons who executed the
 above dedication and acknowledged the
 same to be their free act and deed.
Harry O. Rottan
 Notary Public, Washtenaw Co., Mich.
 My Commission expires August 15, 1925

TAX CERTIFICATE
 OFFICE OF THE COUNTY TREASURER
 WASHTENAW COUNTY, MICHIGAN.
 I hereby certify, that there are no tax liens
 or titles held by the State on the lands describ-
 ed above, and that there are no tax liens or
 titles held by individuals on said lands, for the
 five years preceding the 6th day of August
 1923 and that the taxes for said period of five
 years are fully paid as shown by the records
 of this office.
Walter E. Blum
 County Treasurer.

CERTIFICATE OF APPROVAL
 BY THE COMMON COUNCIL
 This plat was approved by the Common
 Council of the City of Ann Arbor, Washtenaw
 County, Michigan, at a meeting held the first
 day of October, 1923.

REGISTER OF DEEDS } ss.
 Washtenaw County }
 RECEIVED for Record the 13
 day of Dec A D 1923
 at 10:30 o'clock, P. M. and recorded
 in 5 of Books on Page 6
P. H. [Signature]
 Register of Deeds
 Deputy

1 OF 1
 12/13/1923
 M. A. Ives SUBDIVISION
 PAGE 6