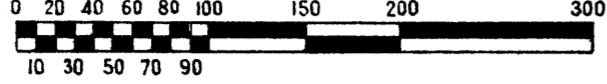


# GREEN BRIER SUBDIVISION No. 2

OF PART OF THE N.E. 1/4 OF SECTION 23, T.2 S., R.6 E.,  
 CITY OF ANN ARBOR, WASHTENAW COUNTY, MICHIGAN.

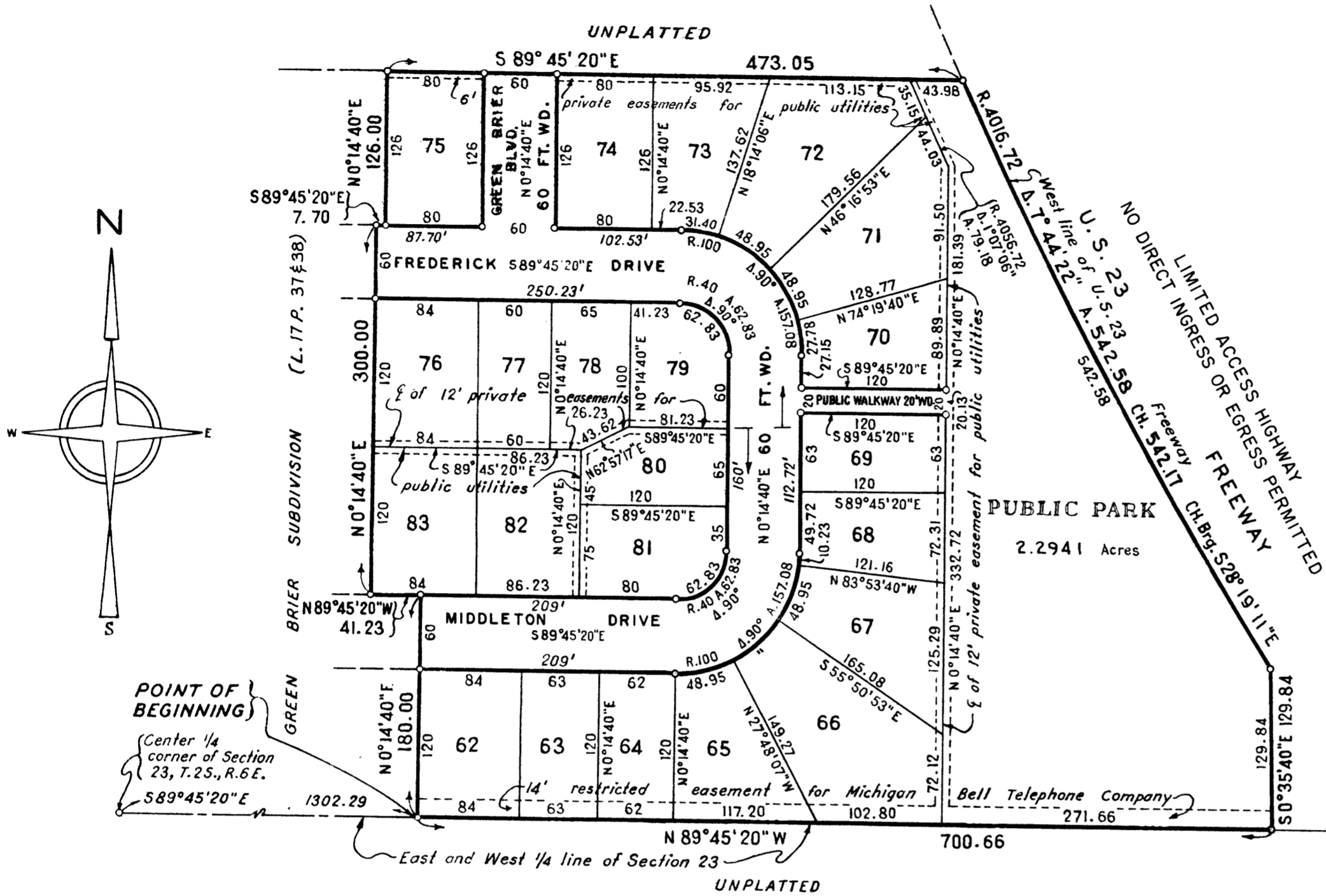
SCALE: ONE INCH=100 FEET.



NOTE: All dimensions are shown in feet and decimals thereof.  
 All curvilinear dimensions are shown along the arc.

JOHN E. HILTZ & ASSOCIATES, INC.,  
 Consulting Engineers  
 and Land Surveyors,  
 15601 W. McNichols Road,  
 Detroit, Mich. 48235

SHEET 2  
 OF  
2 SHEETS



### DESCRIPTION OF LAND PLATTED

The land embraced in the annexed plat of Green Brier Subdivision No. 2 of part of the N.E. 1/4 of Section 23, T.2S., R.6E., City of Ann Arbor, Washtenaw County, Michigan comprises lots 62 thru 83, inclusive, and is described as follows:

Beginning at a point on the east and west 1/4 line of Section 23, T.2S., R.6E., City of Ann Arbor, Washtenaw County, Michigan, located S 89° 45' 20" E 1302.29 feet along said east and west 1/4 line from the center 1/4 corner of said Section 23, and proceeding along the east boundary of Green Brier Subdivision, according to the plat thereof, as recorded in liber 17 of Plats, pages 37 and 38, Washtenaw County Records, N 0° 14' 40" E 180.00 feet, and N 89° 45' 20" W 41.23 feet, and N 0° 14' 40" E 300.00 feet, and S 89° 45' 20" E 7.70 feet, and N 0° 14' 40" E 126.00 feet, thence S 89° 45' 20" E 473.05 feet, thence along the west line of the U.S. 23 Freeway 542.58 feet on the arc of a non tangent circular curve concave to the northeast with a radius of 4016.72 feet, through a central angle of 7° 44' 22", the chord bearing S 28° 19' 11" E 542.17 feet, thence S 0° 35' 40" E 129.84 feet, thence along the said east and west 1/4 line N 89° 45' 20" W 700.66 feet to the point of beginning.

### SURVEYOR'S CERTIFICATE

I hereby certify that the plat hereon delineated is a correct one, and that permanent monuments consisting of metal rods not less than one half inch in diameter and 36 inches in length, encased in concrete cylinders 4 inches in diameter and 36 inches in length, have been set at points marked thus (o) as thereon shown at all angles in the boundaries of the land platted, at all intersections of the lines, of streets and at intersections of the lines of streets with the boundaries of the plat.

Prepared and drafted by:

*Francis A. Papke*  
 Francis A. Papke,  
 Registered Land Surveyor #4675  
 15601 W. McNichols Road  
 Detroit, Michigan 48235

# GREEN BRIER SUBDIVISION No. 2

OF PART OF THE N.E. 1/4 OF SECTION 23, T.2 S., R.6 E.,  
CITY OF ANN ARBOR, WASHTENAW COUNTY, MICHIGAN.

I hereby certify this copy is a true copy of map or plat forwarded the Register of Deeds for recording.  
Date September 1, 1965  
FILED IN AUDITOR GENERAL'S DEPT.  
Date September 2, 1965  
EXAMINED AND APPROVED  
Date September 1, 1965  
Allison Green  
ALLISON GREEN  
ACTING AUDITOR GENERAL  
By Richard E. Lomax  
Richard E. Lomax - Plat Examiner

COPY

Register's Office  
Washtenaw County } S. S.  
Plat of Green Brier  
Subdivision  
was Recorded this 2nd day of  
September A. D., 1965 at 12:30 o'clock  
P. M. in Liber 17 of Plat  
on Page 50 & 51  
Patricia Newkirk Hardy  
Register of Deeds  
ORIGINAL ON FILE

JOHN E. HILTZ & ASSOCIATES, INC.,  
Consulting Engineers  
and Land Surveyors,  
15601 W. McNichols Road,  
Detroit, Mich. 48235

SHEET 1  
OF  
2 SHEETS

### DEDICATION

KNOW ALL MEN BY THESE PRESENTS, that we, Hattie I. Frederick, and Edward S. Tripp as Attorney in Fact for Ernest Ray Jones and Maxine C. Jones, his wife, as proprietors; and Barton, Inc., a Michigan corporation, by Stephan F. Slavik, President, and Joseph F. Slavik, Secretary-Treasurer, as vendees, have caused the land embraced in the annexed plat to be surveyed, laid out and platted to be known as Green Brier Subdivision No. 2 of part of the N.E. 1/4 of Section 23, T.2S., R.6E., City of Ann Arbor, Washtenaw County, Michigan, and that the streets, public walkway, and public park, as shown on said plat are hereby dedicated to the use of the public, and that the private easements indicated on said plat are not dedicated to the public but the right to use said easements is hereby reserved for public utilities and for any other uses as designated hereon, and no permanent structures are to be erected within the lines of said easements, subject to the regulation and control of the use thereof by the local governmental authority.

### WITNESSES:

David F. Merne  
DAVID F. MERNE  
Hattie I. Frederick  
Hattie I. Frederick  
1640 Green Road  
Ann Arbor, Michigan  
Kenneth M. Hamilton  
KENNETH M. HAMILTON  
Robert S. Ward  
ROBERTA S. WARD  
Alice Cooper  
ALICE COOPER  
Edward S. Tripp, Attorney in Fact for Ernest Ray Jones and Maxine C. Jones, under Power of Attorney recorded in Liber 1072, Page 2, Washtenaw County, Records.  
5 South Washington  
Ypsilanti, Michigan  
Barton, Inc.  
10450 W. Nine Mile Road  
Oak Park, Michigan 48237  
By Stephan F. Slavik  
Stephan F. Slavik, President  
Joseph B. Slavik  
Joseph B. Slavik, Secretary-Treasurer.

### ACKNOWLEDGMENT

STATE OF MICHIGAN )  
  )ss.  
County of Oakland )

On this 11th day of JAN, 1965, before me, Nancy Anne ~~Myers~~ MYERS a Notary Public in and for said County appeared Stephan F. Slavik, and Joseph F. Slavik to me personally known, who being each by me duly sworn did say that they are the President and Secretary-Treasurer, respectively, of Barton Inc., a Michigan Corporation and that the seal affixed to said instrument is the corporate seal of said corporation by authority of its Board of Directors and the said Stephan F. Slavik and Joseph F. Slavik acknowledged said instrument to be the free act and deed of said corporation.

My Commission Expires:

January 29, 1966

Nancy Anne Myers  
Nancy Anne ~~Myers~~ MYERS  
Notary Public in and for Wayne County  
acting in Oakland County

### CERTIFICATE OF APPROVAL BY THE CITY PLANNING COMMISSION

This plat was approved by the Planning Commission of the City of Ann Arbor, Michigan at a meeting held on the 9th day of March, 1965

Joseph W. Edwards  
Joseph W. Edwards, Chairman  
Richard W. Lavelly  
Richard W. Lavelly, Secretary

### APPROVAL BY COUNTY PLAT BOARD

This plat was approved on the 7th day of July, 1965 by the Washtenaw County Plat Board. This plat appears to include land adjacent to a state highway.

Patricia Newkirk Hardy  
Patricia Newkirk Hardy (County Register of Deeds)  
J. Martin Rempp  
J. Martin Rempp (Auditor)  
John P. Cook  
John P. Cook (Auditor)  
Herbert G. Loeffler  
Herbert G. Loeffler (Auditor)  
John H. Flook (County Drain Commissioner)

### ACKNOWLEDGMENT

STATE OF MICHIGAN )  
County of Washtenaw )ss.

On this 4th day of January, 1965, before me, a Notary Public in and for said County, personally came the above named, Hattie I. Frederick, known to me to be the person who executed the above dedication and acknowledged the same to be her free act and deed.

My Commission expires

June 14, 1965

Loren W. Campbell  
LOREN W. CAMPBELL  
Notary Public WASHTENAW County

### ACKNOWLEDGMENT

STATE OF MICHIGAN )  
County of Washtenaw )ss.

On this 11th day of JANUARY, 1965, before me, Roberta S Ward, a Notary Public in and for said County, personally appeared the above named, Edward S. Tripp as Attorney in Fact for Ernest Ray Jones and Maxine C. Jones, his wife, known to me to be the person who executed the above dedication, and acknowledged the same to be his free act and deed.

My Commission Expires:

Feb 29, 1965

Roberta S. Ward  
ROBERTA S. WARD  
Notary Public WASHTENAW County

### COUNTY TREASURER'S CERTIFICATE

Office of County Treasurer, Washtenaw County, I hereby certify, that there are no tax liens or titles held by the State on the lands described hereon, and that there are no tax liens or title held by individuals on said lands, for the five years preceding the 31 day of March, 1965, and that the taxes for said period of five years are all paid, as shown by the records of this office

This certificate does not apply to taxes, if any, now in process of collection by township, city or village collecting officers.

Sylvester A. Leonard  
Sylvester A. Leonard (County Treasurer)

### CERTIFICATE OF MUNICIPAL APPROVAL

This plat was approved by the Common Council of the City of Ann Arbor at a meeting held March 15, 1965 and is in compliance with Section 19a and that the width of lots conforms with requirements of Section 30, Act 172 of 1924, as amended.

Lambert H. Fleming  
Lambert H. Fleming, Acting City Clerk

APPROVED August 9, 1965  
DATE  
MICHIGAN STATE HIGHWAY COMMISSION  
Howard E. Hill  
HOWARD E. HILL  
State Highway Director