

**DESCRIPTION-**

The land included in the annexed plat of SAUER AND LOHR'S SUB-DIVISION in the City of Ann Arbor, Washtenaw County, Michigan is described as follows: - A portion of Mellers Addition to the City of Ann Arbor, Washtenaw County, Michigan, according to the official plat thereof, recorded in the office of the Register of Deeds for the said County of Washtenaw on page 374 of Liber 60 of Deeds; being all of Lot 7 and that portion of Lots 5 and 6 lying east of the east boundary line of Lot 13 produced northerly.

NOTE: - Lot numbers of original plat in open figures, thus 5.  
All dimensions given in feet.

**CERTIFICATE-**

I hereby certify that the plat herein delineated is a correct one and that permanent monuments consisting of iron pipe with brick and stone have been placed at all intersections of streets and alleys as marked thus (O), and of iron pipe at all angles in the boundaries of the land platted, as marked thus (O).

*Wm H. Murray*  
Surveyor

**CERTIFICATE OF APPROVAL-**

By the Board of Public Works of the City of Ann Arbor, Michigan, this plat was examined and approved at a regular meeting of the Board of Public Works, Ann Arbor, Michigan on the 23<sup>rd</sup> day of February, 1905.

*Russ George*  
Clerk

**TAX CERTIFICATE-**

Ann Arbor, Michigan. County Treasurers Office, Washtenaw County, Michigan. It is hereby certified that the following statement shows the condition of the lands described below in the County of Washtenaw in so far as relates to the State and County taxes prior to the 17<sup>th</sup> day of March, 1905, to wit, a part of Mellers Addition (for exact description see "DESCRIPTION" above) as appears by the records of this Office. All State and County taxes paid.

*Otto D. Link*  
County Treasurer

The above certificate was presented with the record of this plat.

*John Lawson*  
Register of Deeds for Washtenaw County.

**CERTIFICATE OF RECORD-**

Registers Office, Washtenaw County, ss. Received for Record the 26<sup>th</sup> day of July 1905 and recorded in Liber 3 of Plats on Page 12.

*John Lawson*  
Register of Deeds.

**CERTIFICATE OF COMPARISON-**

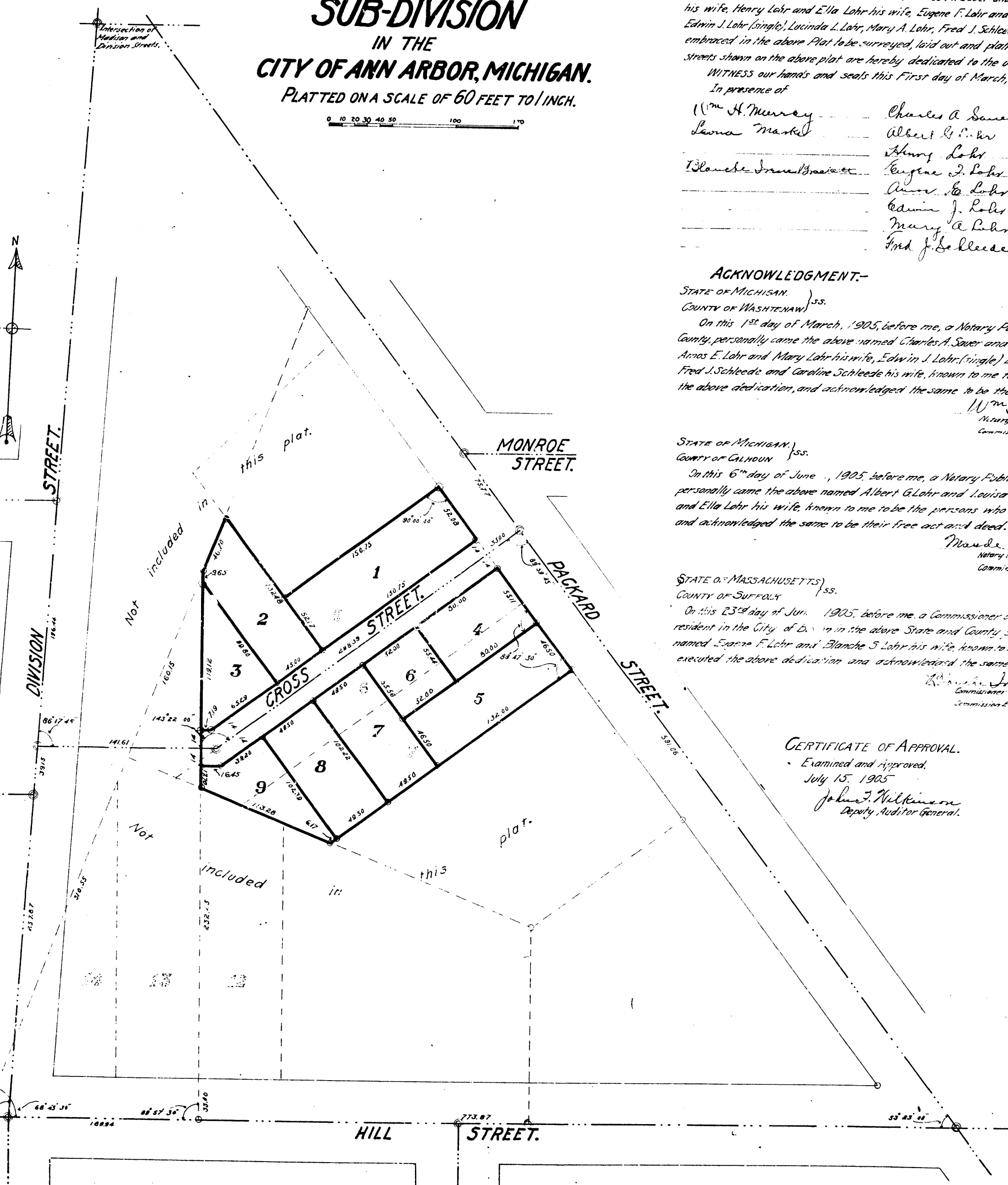
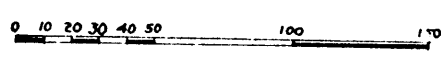
State of Michigan, County of Washtenaw, ss. We *John Lawson* Register of Deeds in and for said County, and *Wm H. Murray* Surveyor, hereby certify that we have each carefully compared this copy with the original plat of Sauer and Lohr's Subdivision in the City of Ann Arbor, Michigan, and that it is an exact copy thereof and of the whole of such original map or plat.

*John Lawson*  
Register of Deeds.  
*Wm H. Murray*  
Surveyor.

**SAUER AND LOHR'S SUB-DIVISION**

IN THE CITY OF ANN ARBOR, MICHIGAN.

PLATTED ON A SCALE OF 60 FEET TO 1 INCH.



**DEDICATION-**

KNOW ALL MEN BY THESE PRESENTS that we, Charles A. Sauer and Julia Katherine Sauer his wife, Albert G. Lohr and Louisa Lohr his wife, Henry Lohr and Ella Lohr his wife, Eugene F. Lohr and Blanche S. Lohr his wife, Amos E. Lohr and Mary Lohr his wife, Edwin J. Lohr (single), Lucinda L. Lohr, Mary A. Lohr, Fred J. Schleebe and Caroline Schleebe his wife, have caused the land embraced in the above Plat to be surveyed, laid out and platted, to be known as SAUER AND LOHR'S SUB-DIVISION, and the streets shown on the above plat are hereby dedicated to the use of the public.

WITNESS our hands and seals this First day of March, A.D. Nineteen hundred and five.  
In presence of  
Wm H. Murray Charles A. Sauer  
Louisa Masket Albert G. Lohr  
Blanche Inman Blanche S. Lohr  
Eugene F. Lohr  
Amos E. Lohr  
Edwin J. Lohr  
Mary A. Lohr  
Fred J. Schleebe  
Julia Katherine Sauer  
Louisa Lohr  
Ella Lohr  
Blanche S. Lohr  
Mary Lohr  
Lucinda L. Lohr  
Caroline Schleebe

**ACKNOWLEDGMENT-**

STATE OF MICHIGAN, } ss.  
COUNTY OF WASHTENAW }  
On this 1<sup>st</sup> day of March, 1905, before me, a Notary Public in and for the said County, personally came the above named Charles A. Sauer and Julia Katherine Sauer, his wife, Amos E. Lohr and Mary Lohr his wife, Edwin J. Lohr (single) Lucinda L. Lohr, Mary A. Lohr, Fred J. Schleebe and Caroline Schleebe his wife, known to me to be the persons who executed the above dedication, and acknowledged the same to be their free act and deed.  
*Wm H. Murray*  
Notary Public, Washtenaw County, Michigan.  
Commission Expires June 20 - 1905.

STATE OF MICHIGAN, } ss.  
COUNTY OF CALHOUN }  
On this 6<sup>th</sup> day of June, 1905, before me, a Notary Public in and for the said County, personally came the above named Albert G. Lohr and Louisa Lohr his wife, Henry Lohr and Ella Lohr his wife, known to me to be the persons who executed the above dedication and acknowledged the same to be their free act and deed.  
*Maudie C. Branning*  
Notary Public, Calhoun County, Michigan.  
Commission Expires July 20 - 1907.

STATE OF MASSACHUSETTS, } ss.  
COUNTY OF SUFFOLK }  
On this 23<sup>rd</sup> day of Jun. 1905, before me, a Commissioner of Deeds for the State of Michigan resident in the City of Boston in the above State and County, personally came the above named Eugene F. Lohr and Blanche S. Lohr his wife, known to me to be the persons who executed the above dedication and acknowledged the same to be their free act and deed.  
*John James Buckett*  
Commissioner of Deeds for State of Michigan.  
Commission Expires December 11 - 1905.

**CERTIFICATE OF APPROVAL.**

Examined and approved.  
July 15, 1905.  
*John F. Wilkinson*  
Deputy Auditor General.

*Deal*

*Deal*

*Deal*