

May 3, 2013

**ADDENDUM NO. 2  
TO THE  
INVITATION TO BID(ITB) - 4288  
WEST MADISON STREET IMPROVEMENT PROJECT  
FOR THE  
CITY OF ANN ARBOR, MICHIGAN**

The following changes, additions, and/or deletions shall be made to the Bid Documents for the W. Madison Street Improvement Project, for the City of Ann Arbor, Michigan, Invitation To Bid No. ITB - 4288.

The information contained herein shall take precedence over the original documents and all previous addenda, and is appended thereto. **This Addendum includes 2 page(s) and 2 drawing(s).**

**The Contractor is to acknowledge receipt of this Addendum No. 2 on page P-1 of the Bid Documents prior to submitting its Proposal.**

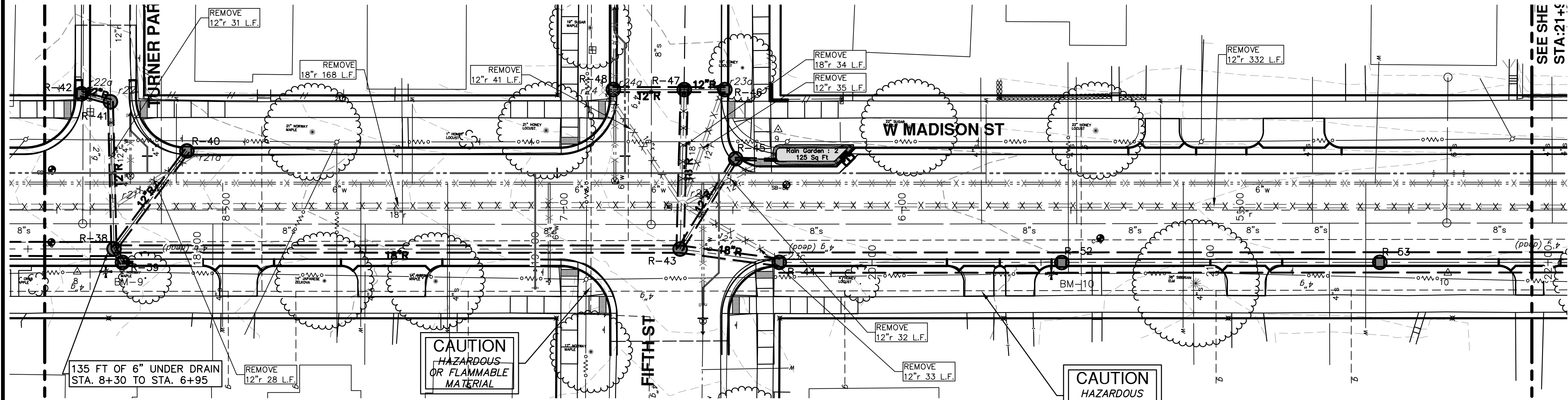
Changes in the Bid Documents which are outlined below are referenced to a page or drawing in which they appear conspicuously. The Bidder is to take note in its review of the documents and include these changes as they affect work or details in other areas not specifically referenced here.

- Item #1: Contract Documents, BF-1;  
Replace page BF-1 with the attached revised BF-1(ADD-2-2).
  
- Item #2: Contract Plan Set; replace plan sheet # 26, Storm Sewer with the attached Sheet  
The Storm Sewer Structure R – 3 is identified as 6’ Dia. Hydro (Water Treatment Device).
  
- Item #3: Contract Plan Set; replace plan sheet # 30, Storm Sewer with the attached Sheet  
The Storm Sewer Structure R – 41 is identified as 6’ Dia. Hydro (Water Treatment Device).



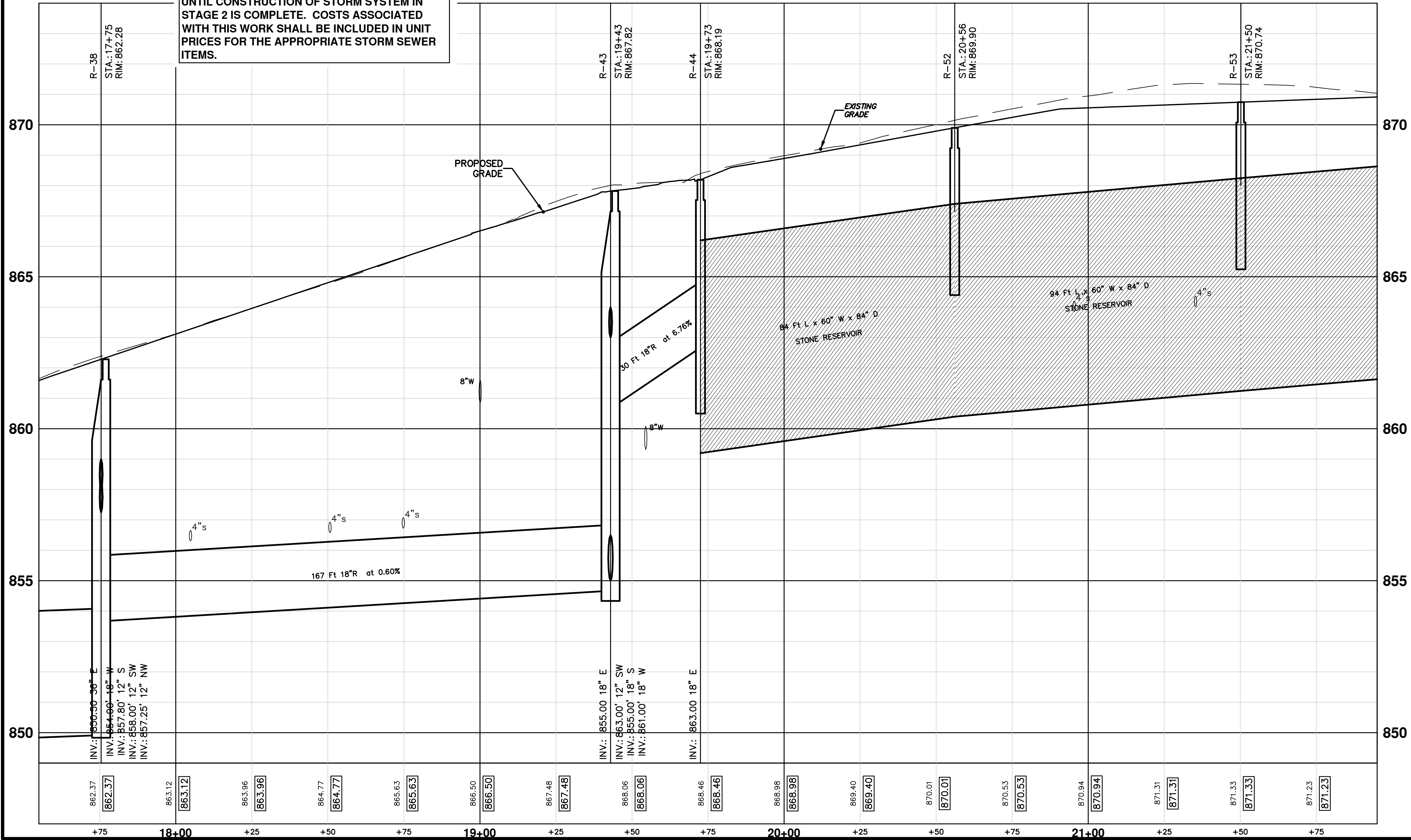


S:\Project Management\Design\2012027 Madison\Plan Production\Primary\20120275TRM.dwg Dwg Created: 7-Sep-12 - \_a2\_standard bw.stb - Plot Date: 2-May-13



THE CONTRACTOR SHALL SUBMIT TEMPORARY DRAINAGE CONTROL PLAN FOR MAINTAINING STORM RUN-OFF FROM STAGE 1 CONSTRUCTION UNTIL CONSTRUCTION OF STORM SYSTEM IN STAGE 2 IS COMPLETE. COSTS ASSOCIATED WITH THIS WORK SHALL BE INCLUDED IN UNIT PRICES FOR THE APPROPRIATE STORM SEWER ITEMS.

**PR STRM**



**PR. STORM SEWER STRUCTURE TABLE**

STRUCTURE	UTILITY STATION	RIM	DEPTH	TYPE	INVERTS
R-38	17+75	862.28	11.78	5' MH Cover B	18" W 854.00 12" S 857.80 12" SW 858.00 12" NW 857.25 36" E 850.50
R-39	17+78	862.19	6.69	2' Inlet Cover K	6" W 857.75 12" SE 857.50
R-40	17+97	863.70	5.70	2' Inlet Cover K	12" NE 860.00
R-41	17+74	863.66	4.66	6' MH HYDRO Cover B	12" E 859.00 12" S 859.85 12" N 859.00
R-42	17+66	863.46	3.46	2' Inlet Cover K	12" W 860.00
R-43	19+43	867.82	12.82	5' MH Cover B	12" SW 863.00 18" S 855.00 18" W 861.00 18" E 855.00
R-44	19+73	868.19	7.19	2' Inlet Cover K	18" E 863.00
R-45	19+56	868.98	7.48	2' Inlet Cover K	8" W 866.00 12" NE 863.50
R-46	19+50	869.43	7.43	2' Inlet Cover K	12" E 864.00
R-47	19+43	869.41	12.41	4' MH Cover B	18" S 863.30 12" E 859.50 12" W 863.00 18" N 859.00
R-48	19+23	868.48	10.48	2' Inlet Cover K	12" W 860.00
R-52	20+56	869.90	5.00	2' Leaching Inlet Cover K	
R-53	21+50	870.74	5.00	2' Leaching Inlet Cover K	

**EX. STORM SEWER STRUCTURE TABLE**

STRUCTURE	ROAD STATION	RIM	DEPTH	TYPE	INVERTS
r21	8+33	862.97	5.60	Storm MH (Remove)	18" W 857.37 12" S 858.27 12" SW 858.17 18" E 857.37
r21a	8+09	863.64	3.70	Storm CB (Remove)	12" NE 859.94
r22	8+34	863.87	4.20	Storm MH (Remove)	12" E 859.87 12" S 859.87 12" N 859.67
r22a	8+43	863.25	2.20	Storm CB (Remove)	12" W 861.05
r23	6+65	868.59	7.50	Storm MH (Remove)	12" W 861.49 12" NW 863.39 12" SW 863.19 12" S 863.19 12" SE 862.99 18" S 863.29 18" E 861.09
r23a	6+53	869.37	5.30	Storm CB (Remove)	12" N 866.07
r23b	6+36	869.15	3.00	Storm CB (Remove)	12" NE 866.15
r23c	6+36	868.27	2.80	Storm CB (Remove)	12" SE 865.47
r24	6+88	868.67	5.40	Storm MH (Remove)	12" SW 865.27 12" NW 865.57
r24a	6+84	868.32	2.40	Storm CB (Remove)	12" NE 865.92

BM 10 Elev. 871.84  
RR SPIKE IN S. SIDE POWER POLE ON THE N. SIDE OF MADISON, 1ST POLE W. OF FIFTH

BM 9 Elev. 863.57  
RR SPIKE IN S. SIDE POWER POLE ON THE N. SIDE OF MADISON, OPPOSITE TURNER PARK CT.

**811** Know what's below. Call before you dig.

**CITY OF ANN ARBOR PUBLIC SERVICES**  
301 EAST HURON STREET  
PO BOX 8647  
ANN ARBOR MI 48106-8647  
www.a2gov.org

**PROJECT MANAGEMENT - PUBLIC SERVICES - CITY OF ANN ARBOR**  
WEST MADISON STREET IMPROVEMENTS  
STORM SEWER  
STA. 17+35 TO STA. 21+95

SHEET No. **30 OF 49**

DRAWING No. **2012027-30**

SCALE PLAN: 1" = 20'  
PROFILE: 1" = 2'

DATE: 05-02-13  
BY: CEC  
CHK: CEC  
DATE: 04-30-13  
BY: DP/CEC  
CHK: DP/CEC  
DATE: 4-16-13  
BY: DP/CEC  
CHK: DP/CEC  
DATE: 12-19-12  
BY: DP/CEC  
CHK: DP/CEC