

RECEIVED FOR RECORD

APR 23 2 33 PM '62

PATRICIA NEWKIRK HARDY
REGISTER OF DEEDS
WASHTENAW COUNTY, MICH.

ORIGINAL
HURON RIVER ACRES

A SUBDIVISION OF PART OF THE NE 1/4 OF SECTION 18, T2S, R6E, ANN ARBOR TOWNSHIP, WASHTENAW COUNTY, MICHIGAN

SCALE: 1"=100'

ALL DIMENSIONS IN FEET AND DECIMALS THEREOF
ALL DIMENSIONS ON CURVES ARE ARC LENGTHS
SURVEY BY ATWELL-HICKS, INC.

DEDICATION

KNOW ALL MEN BY THESE PRESENTS, that we, Arbor Heights Building Corporation, a Michigan Corporation, by S. Brooks Barron, Treasurer, and Thomas A. Gallagher, President, as proprietors, have caused the land embraced in the annexed plat to be surveyed, laid out and platted to be known as HURON RIVER ACRES a subdivision of part of the NE 1/4 of Section 18, T2S, R6E, Ann Arbor Township, Washtenaw County, Michigan, &

and that BIRD ROAD, NEWPORT ROAD, AND WARRINGTON DRIVE AS SHOWN ON SAID PLAT ARE HEREBY DEDICATED TO THE USE OF THE PUBLIC, AND THE EASEMENTS SHOWN ON SAID PLAT ARE NOT DEDICATED TO THE PUBLIC BUT ARE RESERVED FOR PUBLIC UTILITIES AND ANY OTHER USE PUBLIC IN CHARACTER AND NO PERMANENT STRUCTURES ARE TO BE LOCATED WITHIN SAID EASEMENTS, AND THAT OUTLOT "A", WARRINGTON DRIVE SOUTH, AND OUTLOT "B", WARRINGTON DRIVE NORTH, AS SHOWN ON SAID PLAT ARE PRIVATE ROADS AND ARE FOR THE USE OF THE LOT OWNERS OF HURON RIVER ACRES ONLY.

THE ARBOR HEIGHTS BUILDING CORPORATION

Witnesses:
Elvie R. Adcox, Witness
Robert L. Hutchins, Witness
George Kozowski, Witness
John R. Tamm, Witness
C. L. Bostick, Witness
S. Brooks Barron, Treasurer
Thomas A. Gallagher, President
Allan L. Ramee, Witness
Dorothy W. Ramee, Witness

ACKNOWLEDGMENT

STATE OF MICHIGAN) ss.
County of Washtenaw)

On this 20th day of November, A.D., 1961, before me, a Notary Public, in and for said County appeared S. Brooks Barron and Thomas A. Gallagher to me personally known, who being by me duly sworn, did say they are the Treasurer and President respectively of the Arbor Heights Building Corporation and that said instrument was signed in behalf of said corporation by authority of its Board of Directors and the said S. Brooks Barron and Thomas A. Gallagher acknowledged said instrument to be the free act and deed of said corporation.

Elvie R. Adcox
Notary Public, Washtenaw County, Michigan
My Commission expires July 21, 1965

DESCRIPTION OF LAND PLATTED

The land embraced in the annexed plat of HURON RIVER ACRES a subdivision of part of the NE 1/4 of Section 18, T2S, R6E, Ann Arbor Township, Washtenaw County, Michigan is described as follows:

Commencing at the East 1/4 corner of Section 18, T2S, R6E, Ann Arbor Township, Washtenaw County, Michigan; thence along the E & W 1/2 line of said section, N 89°-56' W 766.0 feet for a PLACE OF BEGINNING; thence continuing along the E & W 1/2 line of said section, N 89°-56' W 561.84 feet; thence N 19°-41' W 340.67 feet; thence N 25°-19' W 90.38 feet; thence N 64°-41' E 33.0 feet; thence Easterly 177.91 feet in the arc of a circular curve concave to the South, radius 892.43 feet, chord N 70°-25'-30" E 77.62 feet; thence N 43°-00'-30" W 372.82 feet; thence N 39°-47'-30" E 197.76 feet; thence S 79°-26'-30" E 714.37 feet; thence S 37°-23' E 67.38 feet; thence S 50°-37' E 152.24 feet; thence S 28°-35'-30" E 75.00 feet; thence S 63°-44' W 253.77 feet; thence S 4°-56' E 200.0 feet; thence N 89°-56' W 40.0 feet; thence S 0°-04' W 243.0 feet to the Place of Beginning, containing 10 lots numbered 1 through 10 inclusive and two outlots lettered A and B.

APPROVAL BY BOARD OF COUNTY ROAD COMMISSIONERS

This plat has been examined and was approved on the 15th day of January, 1962, by the Washtenaw County Board of Road Commissioners.

Raymond L. Koch, Chairman
H. L. Frisinger, Member
Don A. Weis, Member

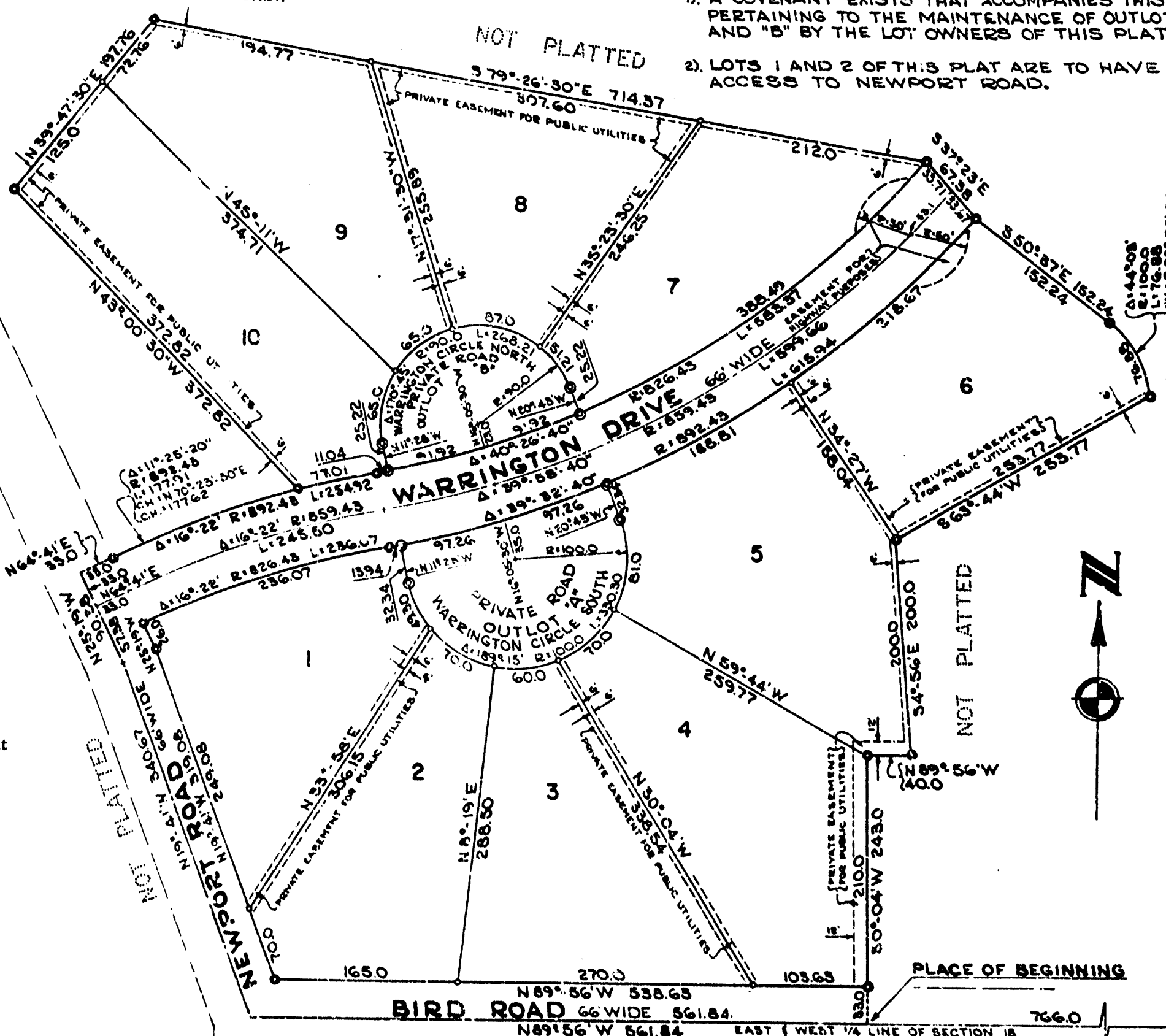
DEDICATION CONTINUED
AND THAT BIRD ROAD, NEWPORT ROAD, AND WARRINGTON DRIVE AS SHOWN ON SAID PLAT ARE HEREBY DEDICATED TO THE USE OF THE PUBLIC, AND THE EASEMENTS SHOWN ON SAID PLAT ARE NOT DEDICATED TO THE PUBLIC BUT ARE RESERVED FOR PUBLIC UTILITIES AND ANY OTHER USE PUBLIC IN CHARACTER AND NO PERMANENT STRUCTURES ARE TO BE LOCATED WITHIN SAID EASEMENTS, AND THAT OUTLOT "A", WARRINGTON DRIVE SOUTH, AND OUTLOT "B", WARRINGTON DRIVE NORTH, AS SHOWN ON SAID PLAT ARE PRIVATE ROADS AND ARE FOR THE USE OF THE LOT OWNERS OF HURON RIVER ACRES ONLY.

EXAMINED AND APPROVED

Date April 17, 1962

Richard E. Lomas, Auditor General

NOTES:
1. A COVENANT EXISTS THAT ACCOMPANIES THIS PLAT PERTAINING TO THE MAINTENANCE OF OUTLOTS "A" AND "B" BY THE LOT OWNERS OF THIS PLAT.
2. LOTS 1 AND 2 OF THIS PLAT ARE TO HAVE NO ACCESS TO NEWPORT ROAD.



"BOWEN'S SUBDIVISION" ACKNOWLEDGMENT

APPROVAL BY COUNTY PLANNING COMMISSION

This plat was approved by the Washtenaw County Planning Commission at a meeting held on the 21st day of April, 1962.

Leigh Beach, Chairman
Everett D. Wolfing, Secretary
Robert D. Carpenter, Director

STATE OF MICHIGAN)
County of Washtenaw)

On this 20th day of November, A.D., 1961, before me, a Notary Public in and for said county, personally came the above named Allan L. Ramee and Dorothy W. Ramee his wife, known to me to be the persons who executed the above dedication, and acknowledged the same to be their free act and deed.

Thomas A. Gallagher, Notary Public, Washtenaw County, Michigan
My Commission expires May 29, 1967

CERTIFICATE OF MUNICIPAL APPROVAL

This plat was approved by the Township Board of the Township of Ann Arbor at a meeting held on the 15th day of November, 1961, and is in compliance with Section 19a and that the width of lots conforms with requirements of Section 30, Act 172, of 1929 as amended.

Ray Wyster, Clerk

SURVEYOR'S CERTIFICATE

I hereby certify that the plat hereon delineated is a correct one and that permanent metal monuments consisting of bars not less than one-half inch in diameter and 36 inches in length, or shorter bars of not less than one-half inch in diameter lapped over each other at least 6 inches with an over-all length of not less than 36 inches, encased in a concrete cylinder at least 4 inches in diameter and 36 inches in depth have been placed at points marked thus (⊙) as thereon shown at all angles in the boundaries of the land platted, at all the intersections of streets, intersections of alleys, or of streets and alleys, and at the intersections of streets and alleys with the boundaries of the plats shown on said plat.

Robert J. Jagow, Registered Land Surveyor # 6998

COUNTY TREASURER'S CERTIFICATE
Office of County Treasurer, Washtenaw County

I hereby certify, that there are no tax liens or titles held by the State on the lands described hereon, and that there are no tax liens or titles held by individuals on said lands for the five years preceding the 26th day of November, 1961, and that the taxes for said period of five years are all paid, as shown by the records of this office. This certificate does not apply to taxes, if any, now in process of collection by township, city or village collecting officer.

W.F. Verner, County Treasurer

APPROVAL BY COUNTY PLAT BOARD

This plat was approved on the 15th day of January, 1962, by the Washtenaw County Plat Board.

Patricia Newkirk Hardy, County Register of Deeds
John H. Flook, County Drain Commissioner
J. Martin Rempp, Auditor
Herbert G. Loeffler, Auditor
John J. Cook, Auditor

RECEIVED FOR RECORD
APR 23 2 33 PM '62

See Plan 986 Page 108
See Plan 986 Page 109
Plan 16 of Plats Page 18

RECEIVED FOR RECORD
APR 23 2 33 PM '62