

POINT #	NORTHING	EASTING	ELEVATION	DESC.
1	284314.225	13291292.870	853.17	SET MAG NAIL
2	284123.306	13291202.580	852.16	SET MAG NAIL
3	284284.314	13290969.340	846.79	SET MAG NAIL
4	284236.103	13291153.220	850.62	SET MAG NAIL

**STRUCTURE LEGEND:**

- STORM MARKING
- YARD DRAIN
- BEEHIVE CATCH BASIN
- ROUND CATCH BASIN
- SQUARE CATCH BASIN
- STORM MANHOLE
- CULVERT/END SECTION
- DOWN SPOUT
- STORM CLEAN-OUT
- OUTLET CONTROL STRUCTURE
- WATER MANHOLE
- FIRE HYDRANT
- GATE VALVE & BOX
- WATER SHUT OFF VALVE
- WELL
- POST INDICATOR VALVE
- SPIGOT / HOSE BIB
- SPRINKLER HEAD
- WATER MARKER
- MONITORING WELL
- GAS MANHOLE
- GAS RISER
- GAS METER
- GAS VALVE
- GAS BLOW OFF
- GAS STOP BOX
- GAS MARKING
- TELEPHONE POLE
- COMMUNICATION MARKING
- COMMUNICATION HAND HOLE
- COMMUNICATION MANHOLE
- TELEPHONE POLE
- TELEPHONE RISER
- POLICE/EMERGENCY CALL
- ELECTRIC METER
- ELECTRIC MANHOLE
- LIGHT POLE
- GUY POLE
- POWER POLE
- UTILITY POLE
- GUY POLE
- GUY ANCHOR
- ELECTRIC RISER
- TRANSFORMER
- ELECTRIC HAND HOLE
- ELECTRIC MARKING
- TRAFFIC SIGNAL POST
- SANITARY MANHOLE
- SANITARY CLEAN-OUT
- SANITARY MARK
- BOLLARD
- ANTENNA
- STATUE / SCULPTURE
- AC UNIT
- PARKING METER
- SIGN
- MAILBOX
- FLAG POLE
- ROCK/BOULDER
- BASKETBALL POST
- BIKE HOOP
- BENCH
- DOMED X-WALK PAD

**LEGAL DESCRIPTION:**

PARCEL 1:  
LOTS 3 AND 4 IN BLOCK 3 SOUTH OF HURON STREET, RANGE 5 EAST, ORIGINAL PLAT OF THE VILLAGE (NOW CITY) OF ANN ARBOR, AS RECORDED IN TRANSCRIPTS, PAGES 152 AND 153, WASHTENAW COUNTY RECORDS.

PARCEL 2:  
LOT 5 AND 4 IN BLOCK 3 SOUTH OF HURON STREET, RANGE 5 EAST, ORIGINAL PLAT OF THE VILLAGE (NOW CITY) OF ANN ARBOR, AS RECORDED IN TRANSCRIPTS, PAGES 152 AND 153, WASHTENAW COUNTY RECORDS.

PARCEL 3:  
THE SOUTH 30 FEET OF LOT 6, AND THE NORTH 36 FEET OF LOT 6 [ALL OF LOT 6] IN BLOCK 3 SOUTH OF HURON STREET, RANGE 5 EAST, ORIGINAL PLAT OF THE VILLAGE (NOW CITY) OF ANN ARBOR, AS RECORDED IN TRANSCRIPTS, PAGES 152 AND 153, WASHTENAW COUNTY RECORDS.

**CERTIFICATE:**

TO THE CITY OF ANN ARBOR:  
THIS IS TO CERTIFY THAT THIS MAP OR PLAT AND THE SURVEY ON WHICH IT IS BASED WERE MADE IN ACCORDANCE WITH THE 2016 MINIMUM STANDARD DETAIL REQUIREMENTS FOR ALTA/NSPS LAND TITLE SURVEYS, JOINTLY ESTABLISHED AND ADOPTED BY ALTA AND NSPS, AND INCLUDES ITEMS 1-5, 7A, 7C, 8, 9, 11, 13, 16, AND 19 OF TABLE A THEREOF. THE FIELDWORK WAS COMPLETED ON 7/13/20.

DATE OF PLAT OR MAP: JULY 13, 2020

KEVIN GINGRAS, P.S., No. 49278

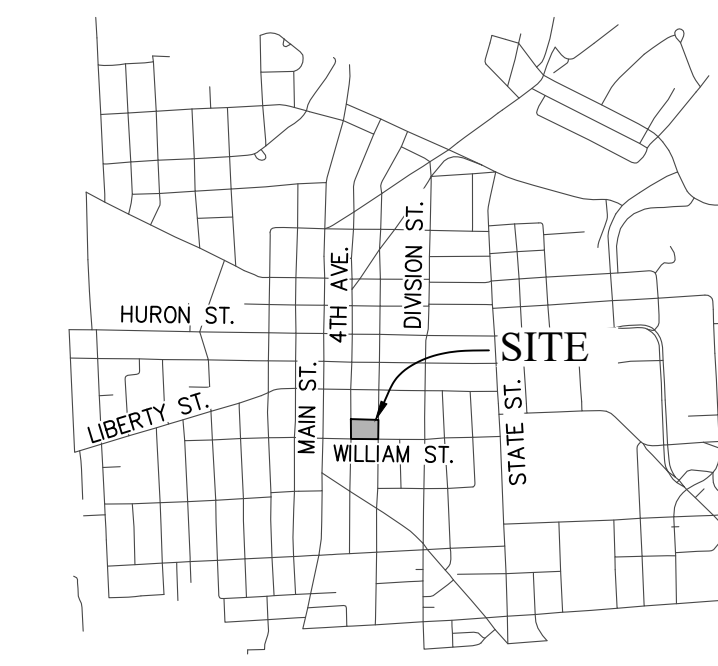


**NOTE:**  
BEARINGS BASED ON MICHIGAN STATE PLANE COORDINATES, SOUTH ZONE, NAD '83

**PARCEL INFORMATION:**

ADDRESS: 350 S. FIFTH AVE.  
ZONING: D1

**VICINITY MAP (N.T.S.):**



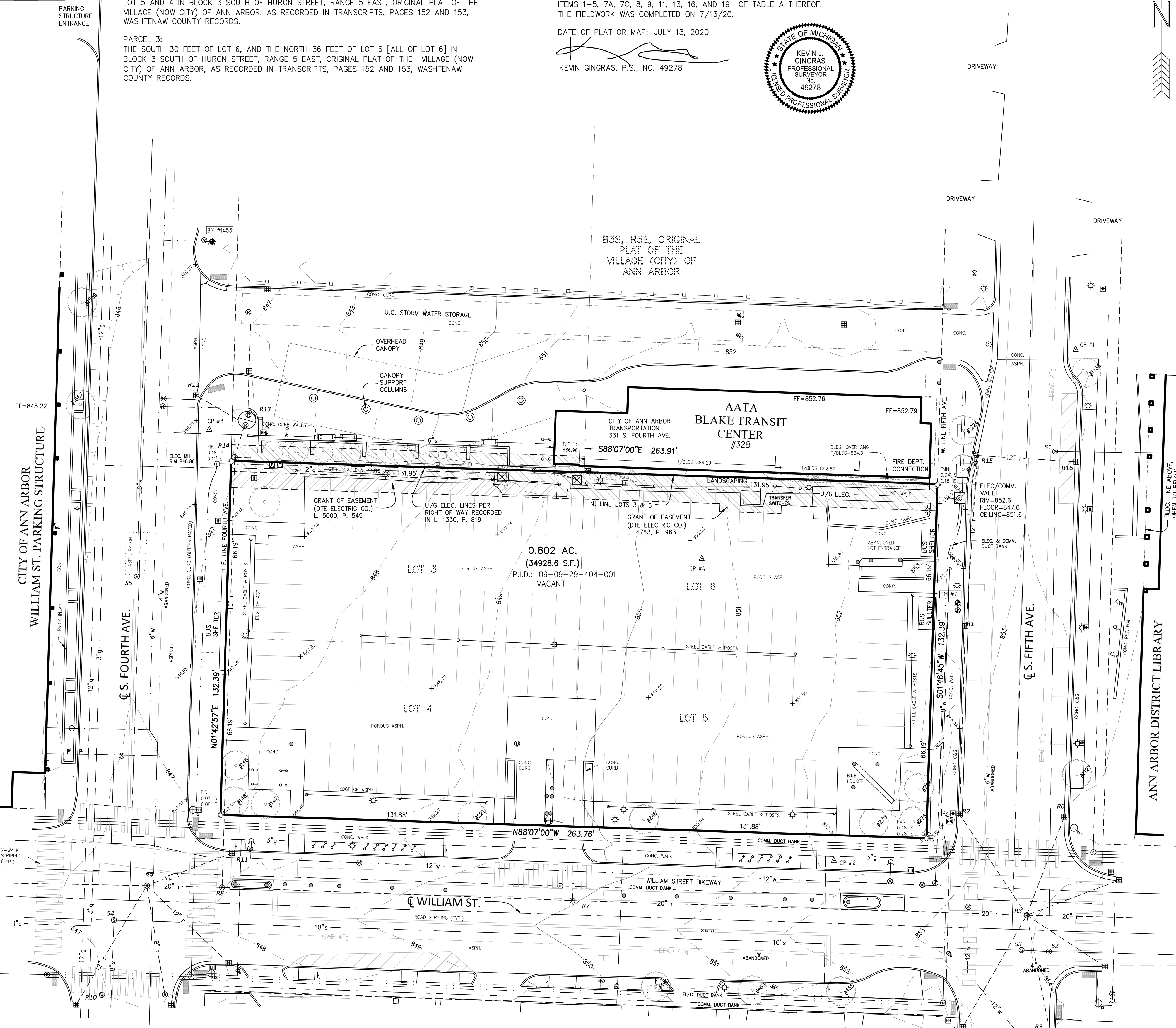
**Arbor Land Consultants, Inc.**  
Professional Land Surveyors  
6653 SCHNEIDER RD.  
MANCHESTER, MI 48158  
(734) 669-2960  
www.arborlandinc.com

CLIENT: ANN ARBOR HOUSING COMMISSION  
**ALTA/NSPS LAND TITLE SURVEY**  
#350 S. FIFTH AVE.  
LOTS 3, 4, 5, AND 6  
B3S, R5E, ORIGINAL PLAT  
WASHTENAW COUNTY, MICHIGAN

- 0/6 ELEC. — ELECTRIC LINE
- 8" — GAS MAIN
- 8" — BEEHIVE CATCH BASIN
- 18" — WATER MAIN
- 18" — STORM LINE
- 6" — SANITARY LINE
- 0/6 CITY — CABLE TV LINE
- U/G CONC. — PHONE LINE
- CHAIN LINK — CHAIN LINK FENCE
- WOOD — WOOD FENCE
- X — BARBED WIRE FENCE
- O — WATER MANHOLE
- O — FIRE HYDRANT
- O — GATE VALVE
- O — BEEHIVE CATCH BASIN
- O — CURB CATCH BASIN
- O — STORM MANHOLE
- O — CULVERT/END SECTION
- O — SANITARY MANHOLE
- O — UTILITY POLE
- O — LIGHT POLE
- O — TELEPHONE RISER
- O — GAS MAIN RISER

- SECTION CORNER
- FOUND IRON PIPE
- FOUND IRON ROD
- SET IRON PIPE
- SET MAG NAIL
- FOUND MAG NAIL
- SET WOOD LATH
- CONTROL POINT
- MEASURED DIMENSION
- RECORDED DIMENSION
- SURFACE FLOW

**UTILITY NOTE:**  
811  
Know what's below.  
Call before you dig.



**TREE TABLE:**

TREE NO.	SIZE (DBH)	SPECIES
145	4	PEAR
146	5	PEAR
147	4	PEAR
221	2	PEAR
246	2	PEAR
275	5	PEAR
276	5	PEAR
455	12	MAPLE
469	8	BASSWOOD
490	8	BASSWOOD
704	5	PEAR
705	5	CHERRY
1127	6	CRAB APPLE
1138	6	CRAB APPLE
1224	2	GINKO
1225	2	GINKO
1559	2	CHERRY

**SANITARY SEWER STRUCTURE:**

No.	TYPE	RIM	INVERTS			
S1	MH	852.73	6" E 845.03	8" S 843.73		
S2	MH	854.14	10" E 842.09	10" W 842.04	8" N 842.54	
S3	MH	853.93	10" E 841.83	10" W 841.83		
S4	MH	847.46	10" E 834.96	10" W 834.96	8" S 835.26	8" NE 835.26
S5	MH	846.69	8" N 839.69	4" SW 841.49		PLUGGED

**STORM SEWER STRUCTURE:**

No.	TYPE	RIM	INVERTS			
R1	CURB CB	852.39	12" N-S			
R2	CURB CB	852.43	12" N	12" SE		
R3	MH	853.91	20" E-W 846.34	12" NW 847.69	12" NNE 847.69	12" SW 846.99
		853.91	12" SE 847.64	12" NE 847.67		
R4	CURB CB	852.75	12" NE 847.45			
R5	CURB CB	853.54	12" NW 849.54			
R6	CURB CB	853.58	12" SW 849.38			
R7	MH	849.95	20" E-W			
R8	MH	847.85	20" E-W 840.35	15" N 840.55		
R9	MH	847.55	20" E-W 839.51	12" NE 842.51	12" ESE 840.85	8" SSE 842.25
R10	CURB CB	846.29	12" NE 842.49			
R11	CURB CB	847.51	12" SW 844.11			
R12	OC	846.28	12" SE 843.68			
R13	OCS	847.35	12" S 843.30	12" N 843.25		
R14	MH	847.06	12" N 843.41	12" S 843.16		
R15	CURB CB	851.90	12" S 849.50	12" E 849.50		
R16	CURB CB	852.58	12" W 849.88			

**FLOOD ZONE NOTE:**

ACCORDING TO FEMA FLOOD INSURANCE RATE MAP #26161C0263E, DATED 4/3/2012, THIS PARCEL LIES WITHIN ZONE X, WHICH IS DEFINED AS "AREA OF MINIMAL FLOOD HAZARD"