

**"ASSESSOR'S PLAT NO 16**  
 A PART OF BLOCK 8, OF J.D. BALDWIN'S  
 EASTERN ADDITION TO THE  
**CITY OF ANN ARBOR,  
 WASHTENAW COUNTY, MICH.**  
 SCALE 1 IN = 40 FT.

*June 1-1931  
 J. P. Howe*

1 OF 1  
 06/01/1931  
 P0032001  
 ASSESSOR'S PLAT NO. 16  
 SHEET 8 PAGE 15

**SURVEYOR'S CERTIFICATE**

I hereby certify that the plat hereon delineated is a correct one and that permanent metal monuments of not less than one inch in diameter and fifteen inches in length set in a concrete base at least four inches in diameter and forty-eight inches in depth have been placed at the points marked thus:  $\odot$  as thereon shown at all angles in the boundaries of the land platted, at all the intersections of streets, intersections of alleys, or of streets and alleys, and at the intersections of streets and alleys with the boundaries of the plat as shown on said plat.

*George H. Sandenburgh*  
 Registered Civil Engineer

**CERTIFICATE OF MUNICIPAL APPROVAL**

This plat was approved by the Common Council of the City of Ann Arbor, Washtenaw County, Michigan at a meeting held

*May 4 1931*  
*J. J. Perry*  
 Clerk

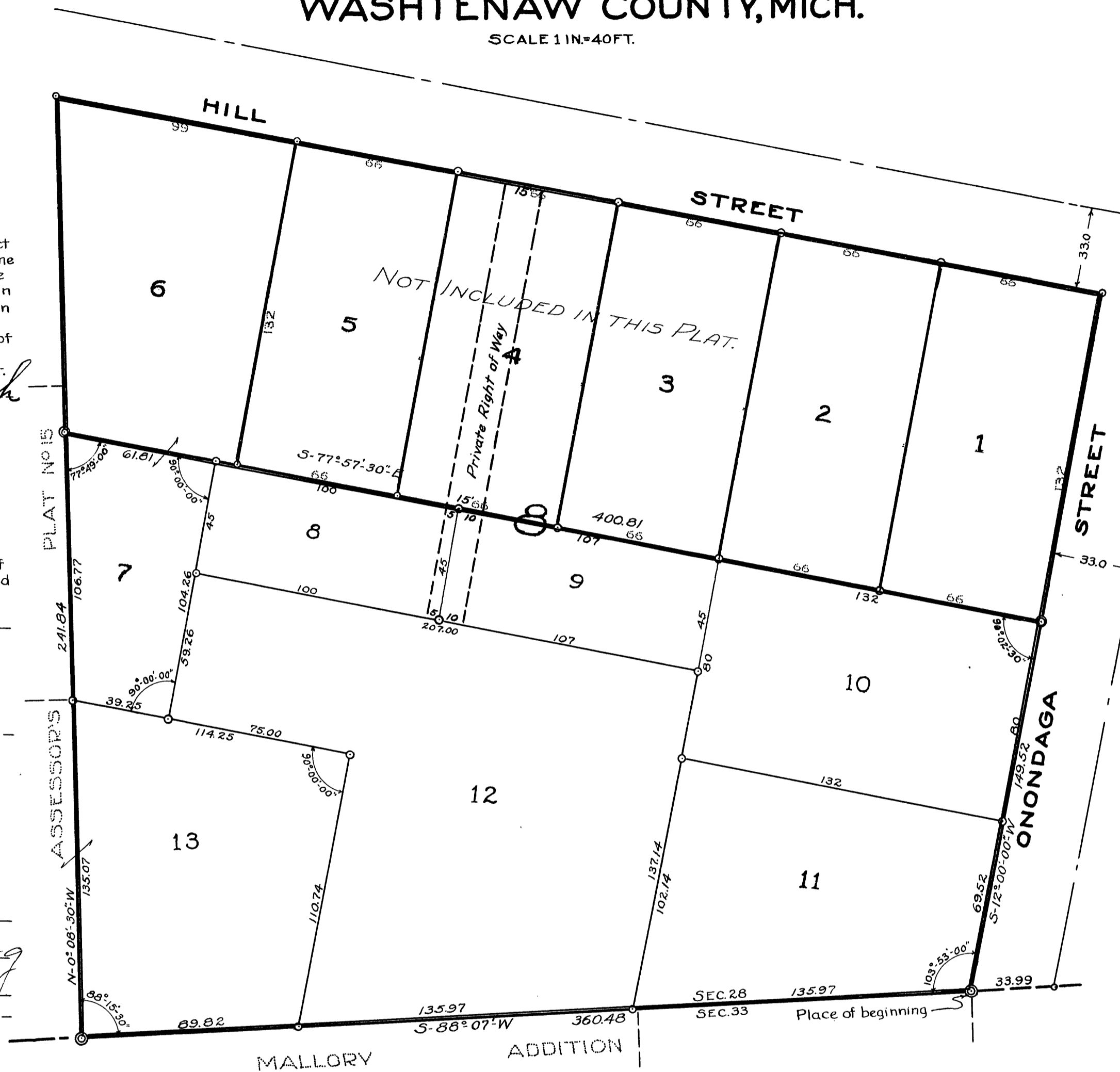
This plat was approved by the Board of Public Works of the City of Ann Arbor, Washtenaw County, Michigan at a meeting held

*April 22 1931*  
*J. J. Perry*  
 Clerk

**CERTIFICATE OF APPROVAL BY BOARD OF COUNTY AUDITORS**

Approved by Board of County Auditors of Washtenaw County, Michigan this *5* day of *May* 19*31*

*L. D. Carshung*  
 Chairman  
*William M. Fowler*  
*Oliver L. Brown*



**DEDICATION**

KNOW ALL MEN BY THESE PRESENTS: That I Herbert W. Crippen, Assessor of the City of Ann Arbor, Washtenaw County, Michigan by virtue of authority in me vested by Section 51, Act 172 P.A. of 1929, having been duly authorized by the Common Council of the City of Ann Arbor, Washtenaw Co., Michigan, have caused the land described in the annexed Plat to be surveyed, laid out and platted to be known as Assessors Plat #16, a part of Block 8 of J.D. Baldwin's Eastern Addition to the City of Ann Arbor, Washtenaw County, Michigan, being a part of the South East Quarter of Section 28, T.2.S., R.6.E., Washtenaw County, Michigan, and that the streets and alleys as shown on said plat are hereby dedicated to the use of the public.

*Herbert W. Crippen*  
 Assessor of the City of Ann Arbor,  
 Washtenaw County, Michigan.

Witnesses  
*Arnold R. Scovell*  
*Ernest M. Wurster*

**ACKNOWLEDGEMENT**

STATE OF MICHIGAN } ss  
 COUNTY OF WASHTENAW }  
 On this *Fourth* day of *May* AD 19*31* before me, a Notary Public, in and for said county, personally came the above named Herbert W. Crippen, Assessor of the City of Ann Arbor, Washtenaw County, Michigan known to me to be the person who executed the above dedication, and acknowledged the same to be his free act and deed as such Assessor.

*Ernest M. Wurster*  
 Notary Public in and for Washtenaw Co., Michigan.  
 My Commission expires *May 27 1932*

**DESCRIPTION**

Commencing at the South East Corner of Sec. 28, T.2.S., R.6.E.; thence Westerly along the South line of Section 28 281.49 feet to the Place of Beginning; thence continuing on said Section line S-88°07'00"W, 360.48 feet to an iron pipe; thence N-07°08'30"W, 241.84 feet to an iron pipe; thence S-77°57'30"E, 400.81 feet to an iron pipe in the West line of Onondaga Street; thence S-12°00'00"W, 149.52 feet along the West line of Onondaga Street to the Place of Beginning.

*Washtenaw*  
*Assessors Plat 110 16*  
*June 31 4" Plat*  
*John A. Cunningham*  
*June 1-1931*  
*J. P. Howe*

*Received 12/19/33*