

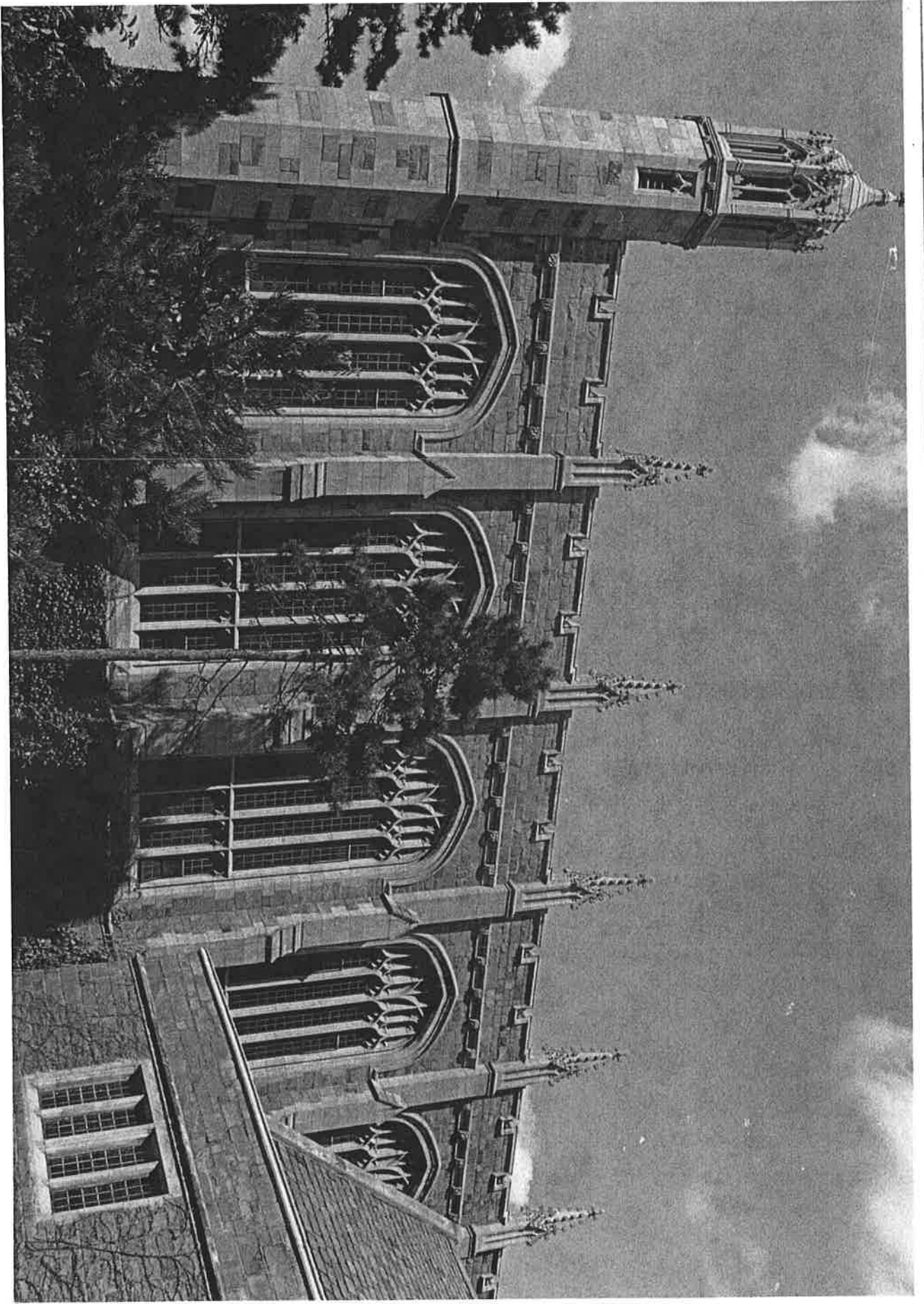
PROPERTY OF THE NATIONAL REGISTER

1. Economics Building
University of Michigan
Central Campus Historic
District
2. Ann Arbor, Michigan
3. Laurte K. Sommers
1977
4. Michigan History Division
5. west and south facades
6. #12
7. #27

JUN 15 1978

DEC 14 1977

Washtenaw County



PROPERTY OF THE NATIONAL REGISTER

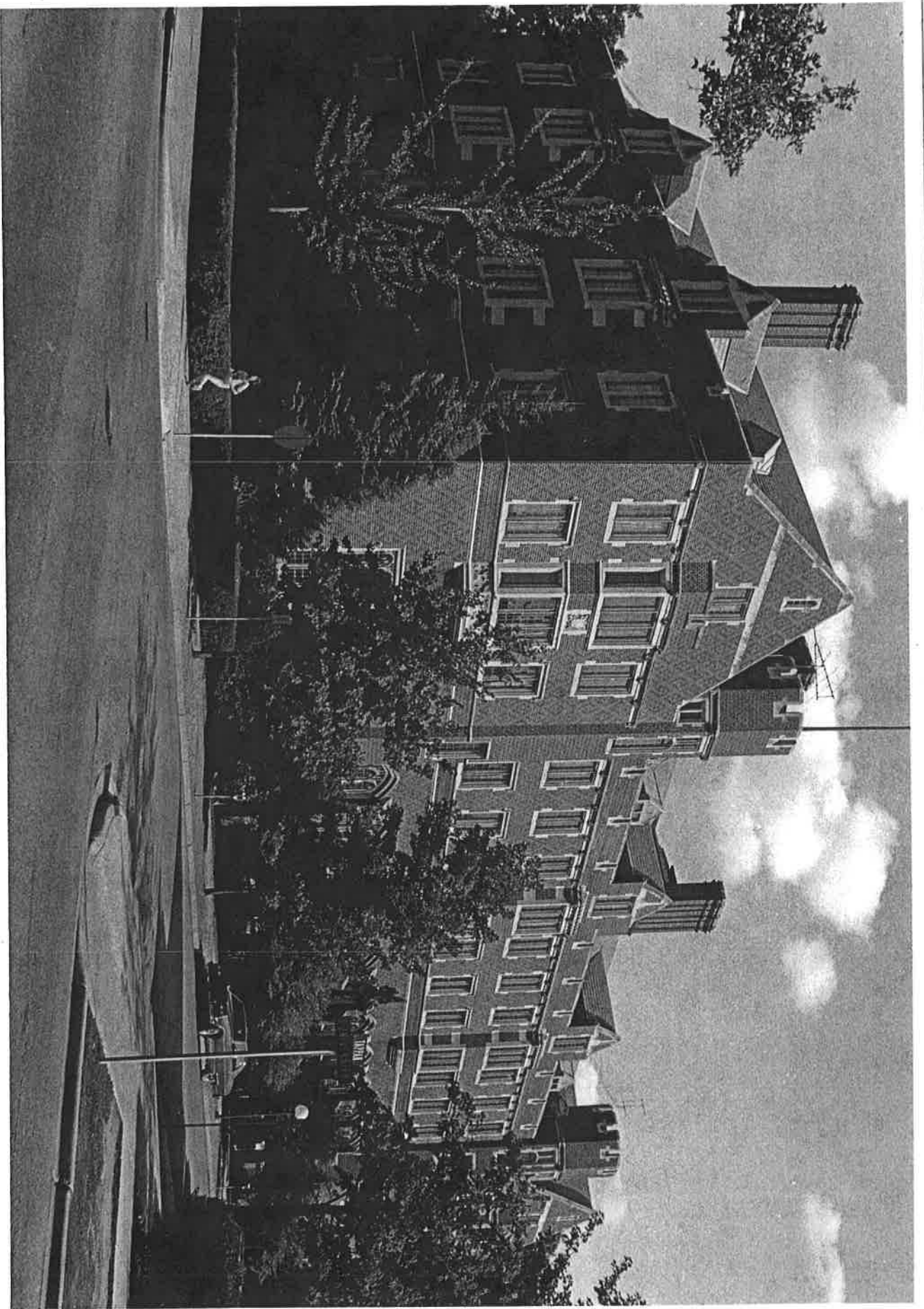
1. Law Quadrangle, Lawyers' Club
Dining Hall
University of Michigan
Central Campus Historic
District
2. Ann Arbor, Michigan
3. Laurie K. Sommers
4. 1977
5. Michigan History Division
6. south facade
7. ~~#252~~

13 @ 27

DEC 14 1977

Washtenaw County

JUN 15 1978



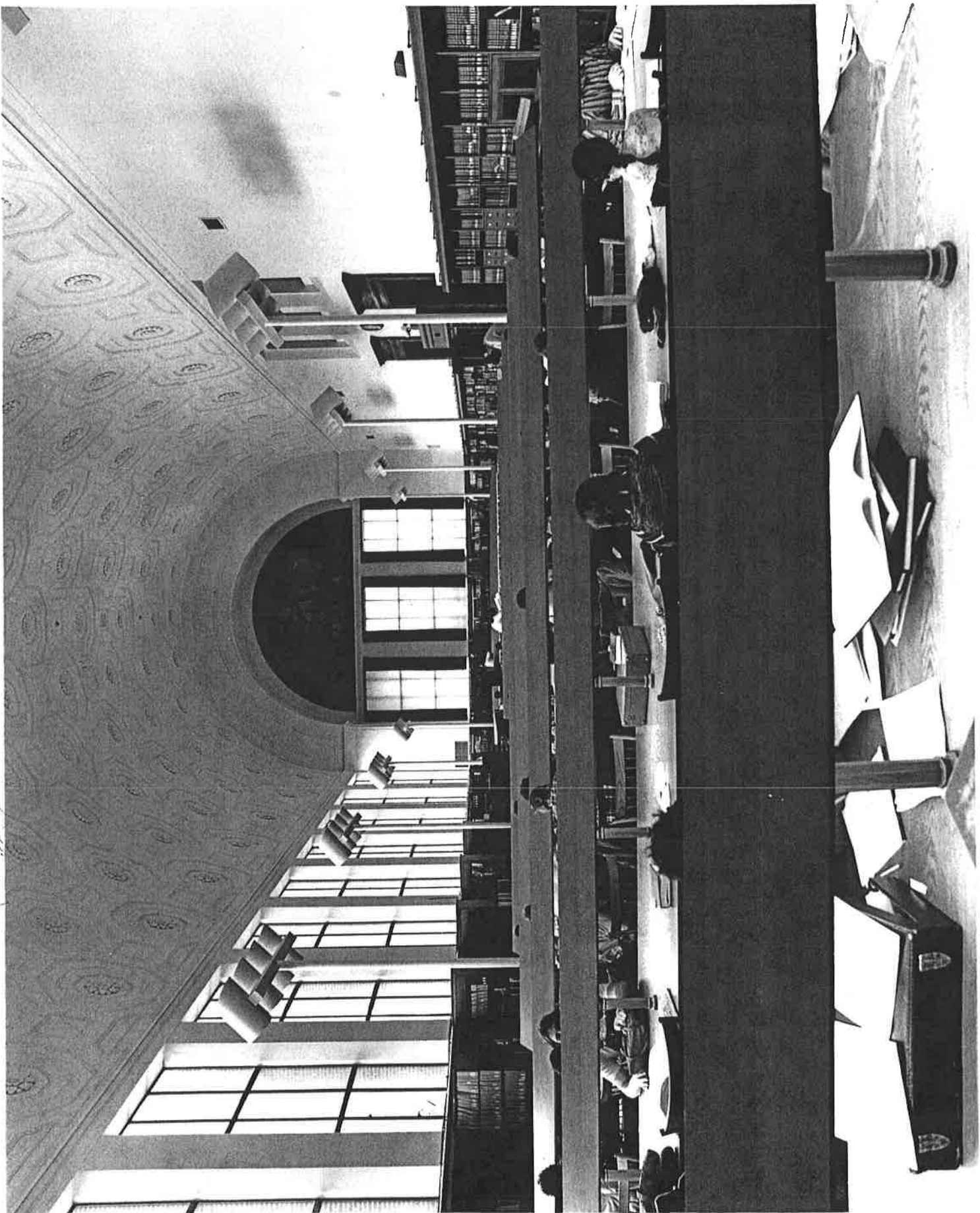
PROPERTY OF THE NATIONAL REGISTER

1. Martha Cook Residence
University of Michigan
Central Campus Historic
District
2. Ann Arbor, Michigan
3. Laurie K. Sommers
4. 1977
5. Michigan History Division
6. west and north facades
7. ~~#26~~, view 1

14 4 27
DEC 14 1977

Washtenaw County

JUN 15 1978



PROPERTY OF THE NATIONAL REGISTER

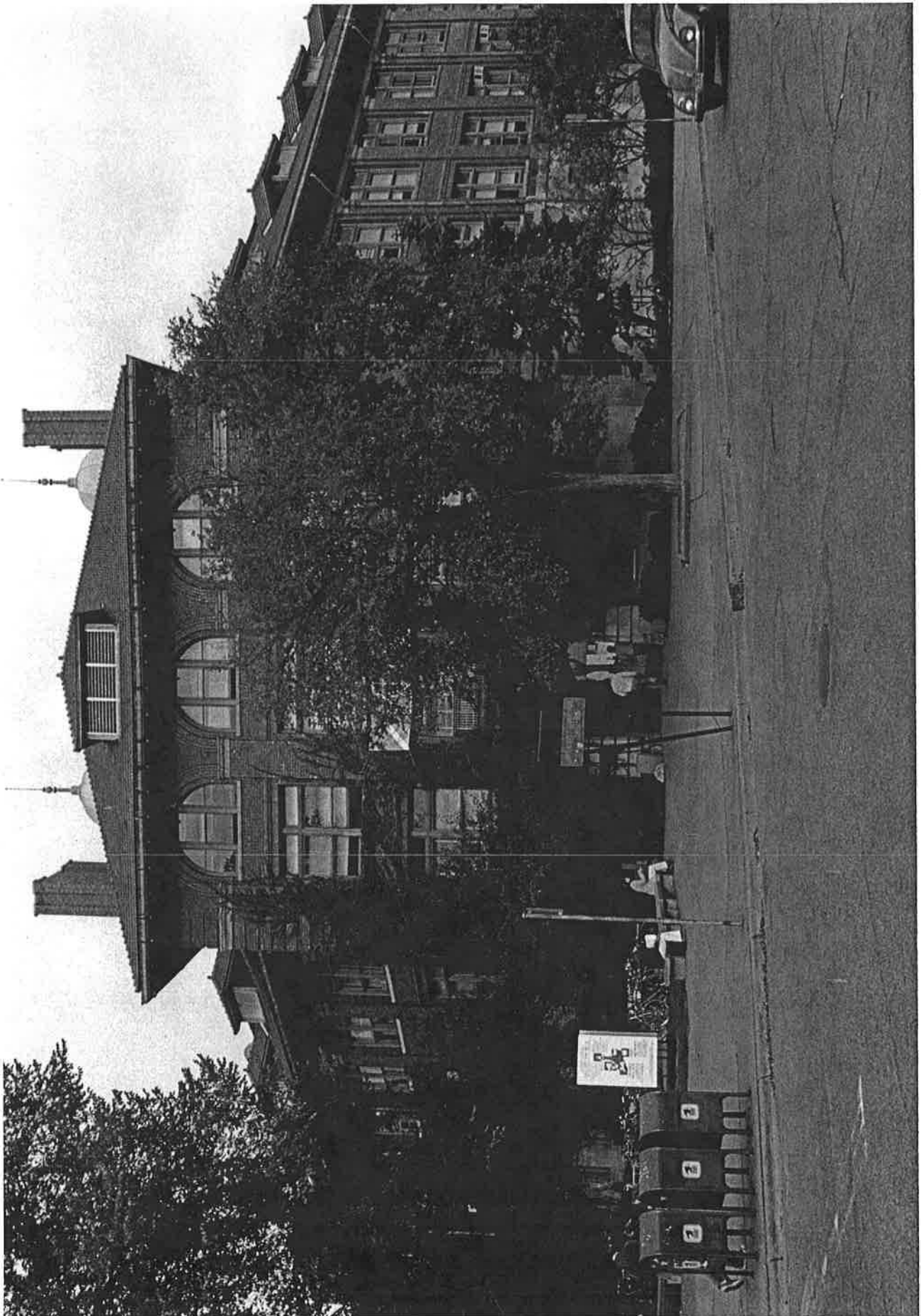
1. Harland Hatcher Graduate Library
University of Michigan
Central Campus Historic District
2. Ann Arbor, Michigan
3. University of Michigan I
Information Service
4. 1976
5. University of Michigan
Information Service,
Ann Arbor
6. interior, second floor
reference room
7. ~~#19~~ view 2 15427

DEC 14 1977

JUN 15 1978

Washtenaw County

PHOTO BY BOB KALMBACH



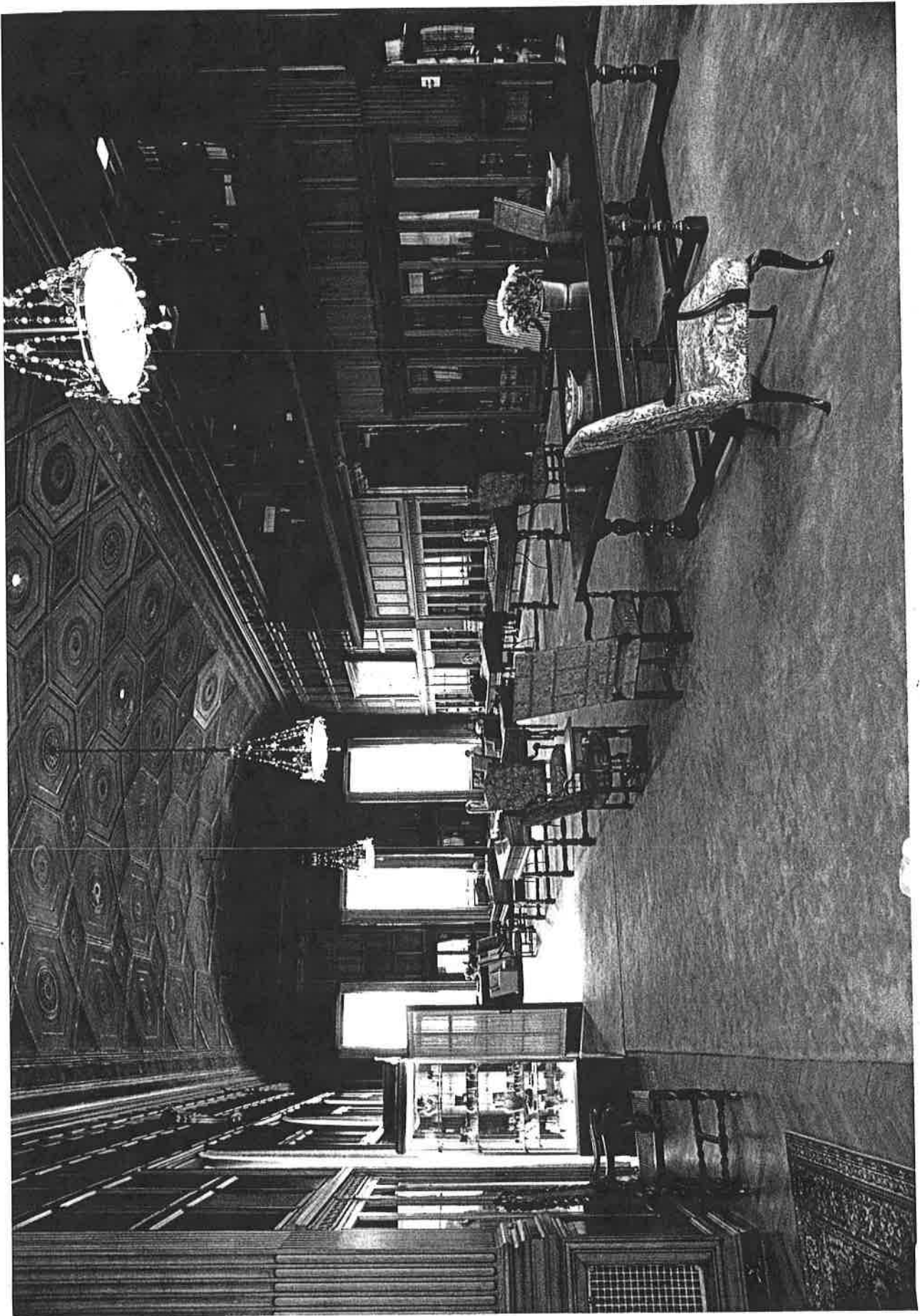
PROPERTY OF THE NATIONAL REGISTER

1. West Engineering Building
University of Michigan
Central Campus Historic
District
2. Ann Arbor, Michigan
3. Laurie K. Sommers
4. 1977
5. Michigan History Division
6. south and east facades
7. #16 @ 27

JUN 15 1979

DEC 14 1977

Washtenaw County



PHOTOGRAPHS IN PROPERTY OF THE NATIONAL REGISTER

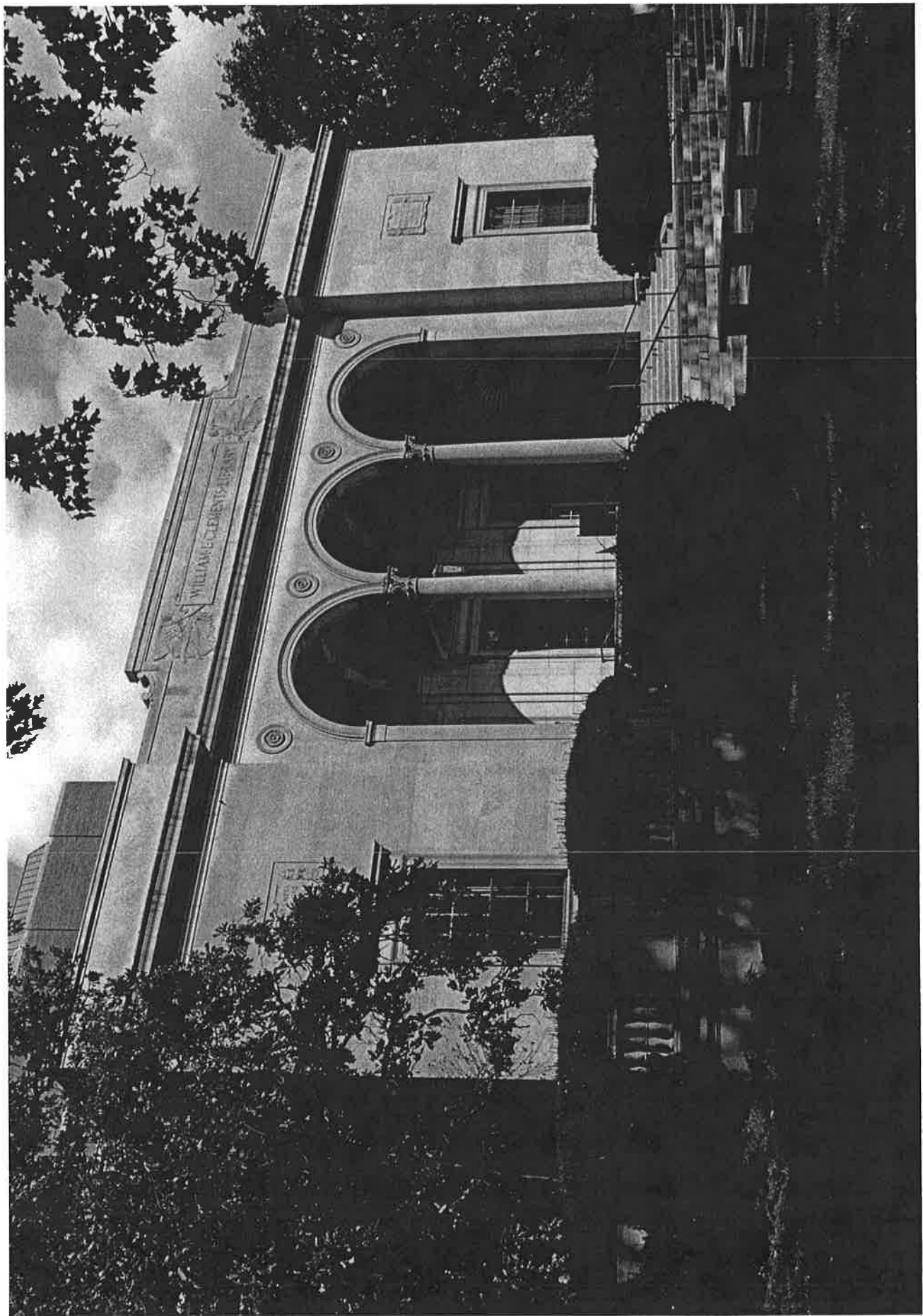
1. William L. Clements Library
University of Michigan
Central Campus Historic
District
2. Ann Arbor, Michigan
3. University of Michigan
Information Service
4. 1973
5. University of Michigan
Information Service, Ann
Arbor
6. interior, main reading and
exhibition room
7. #18, view 2

#17 & 27

DEC 14 1977

JUN 15 1978

PHOTO BY BOB KALMBACH



PROPERTY OF THE NATIONAL REGISTER

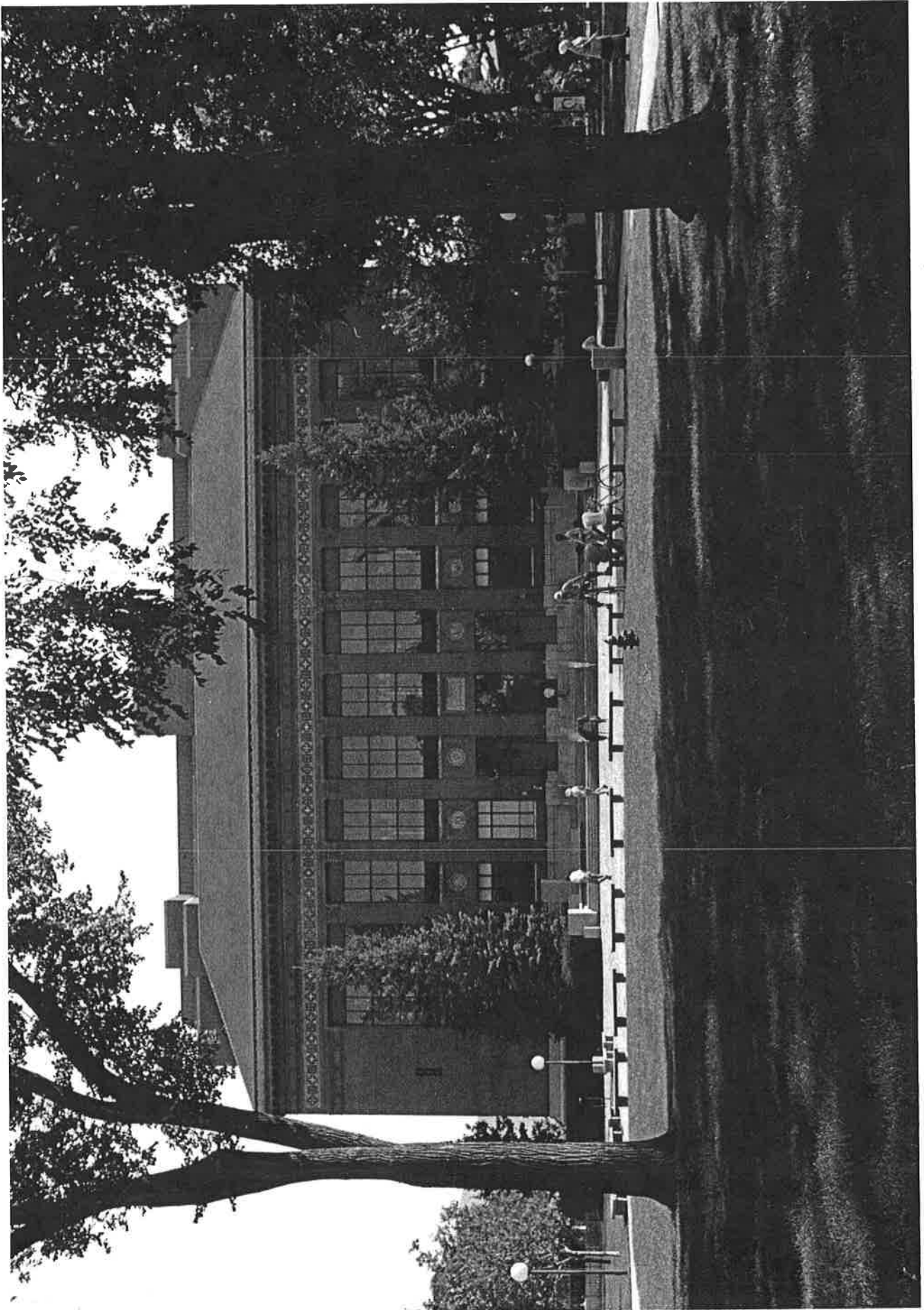
1. William L. Clements Library
University of Michigan
Central Campus Historic
District
2. Ann Arbor, Michigan
3. Laurie K. Sommers
4. 1977
5. Michigan History Division
6. south facade
7. #18, view 1

827

Washtenaw County

DEC 14 1977

JUN 15 1978



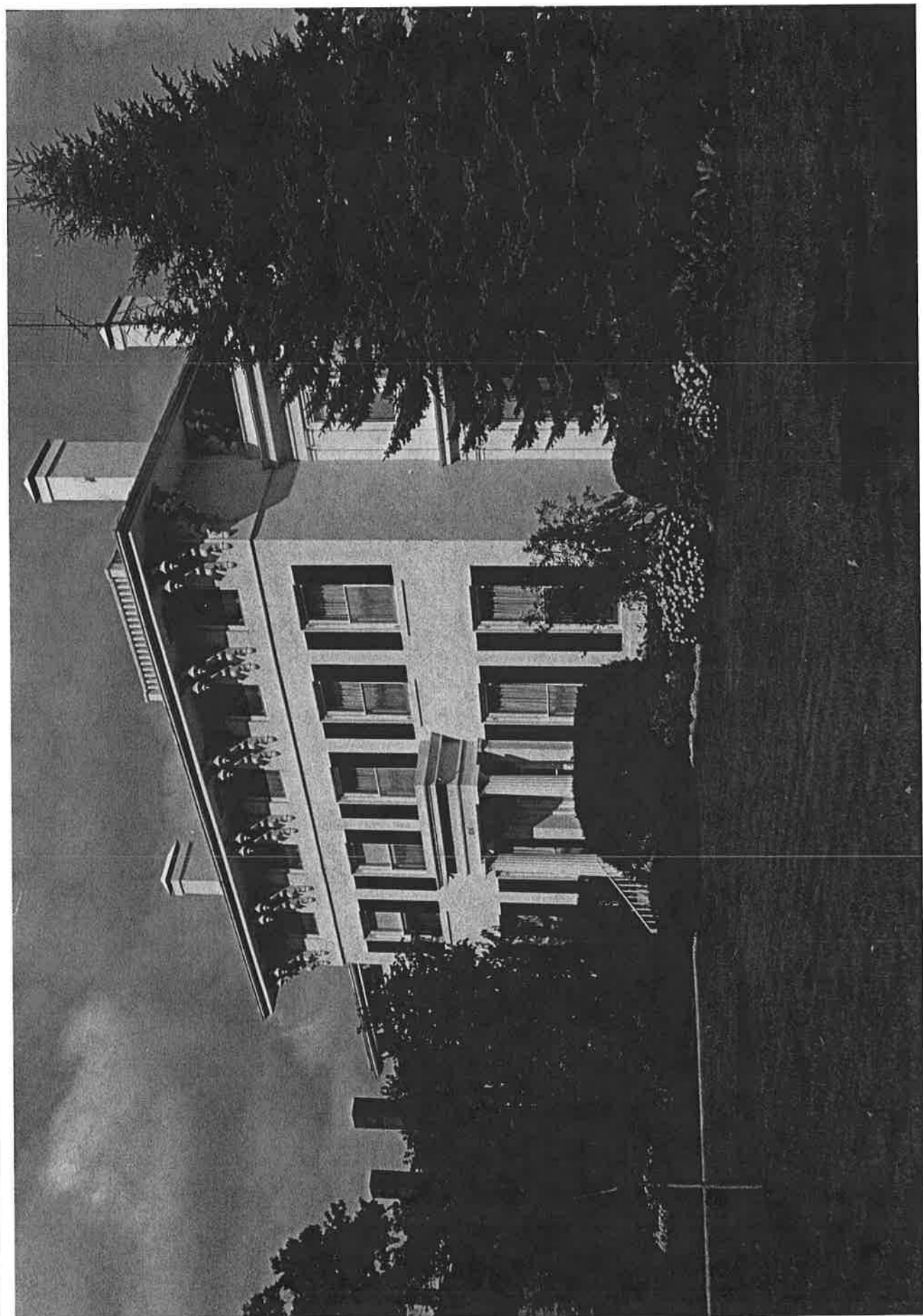
PROPERTY OF THE NATIONAL REGISTER

Washtenaw County

1. Harlan Hatcher Graduate
Library
University of Michigan
Central Campus Historic
District
2. Ann Arbor, Michigan
3. Laurie K. Sommers
4. 1977
5. Michigan History Division
6. north facade
7. #19, view 1

Q27

JUN 15 1978 DEC 14 1977



PROPERTY OF THE NATIONAL REGISTER

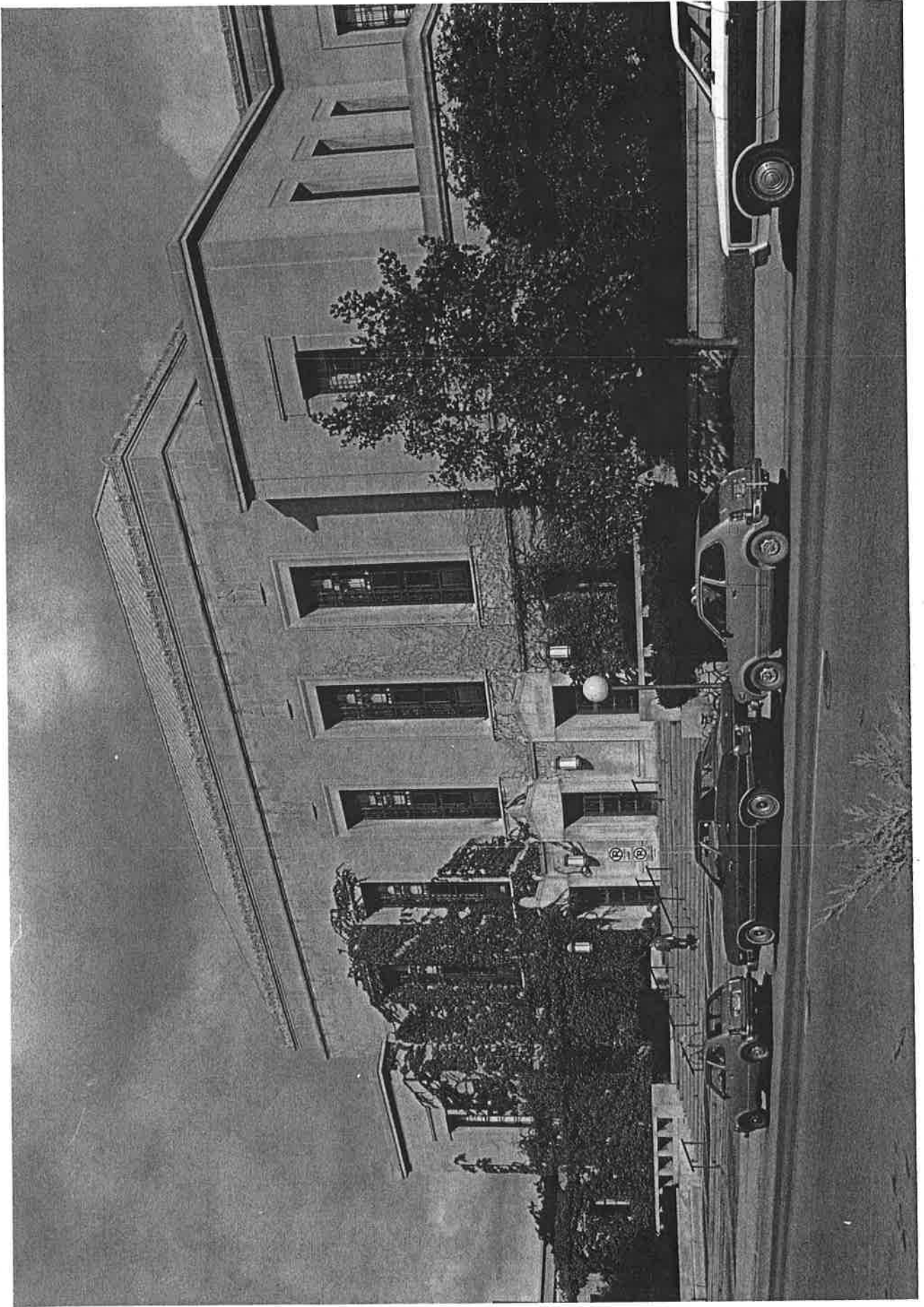
Washington County

1. President's House
University of Michigan
Central Campus Historic
District
2. Ann Arbor, Michigan
3. Laurie K. Sommers
4. 1977
5. Michigan History Division
6. south and east facades
7. #20 *427*

JUN 15 1978

DEC 14 1977

PROPERTY OF THE NATIONAL REGISTER



PROPERTY OF THE NATIONAL REGISTER

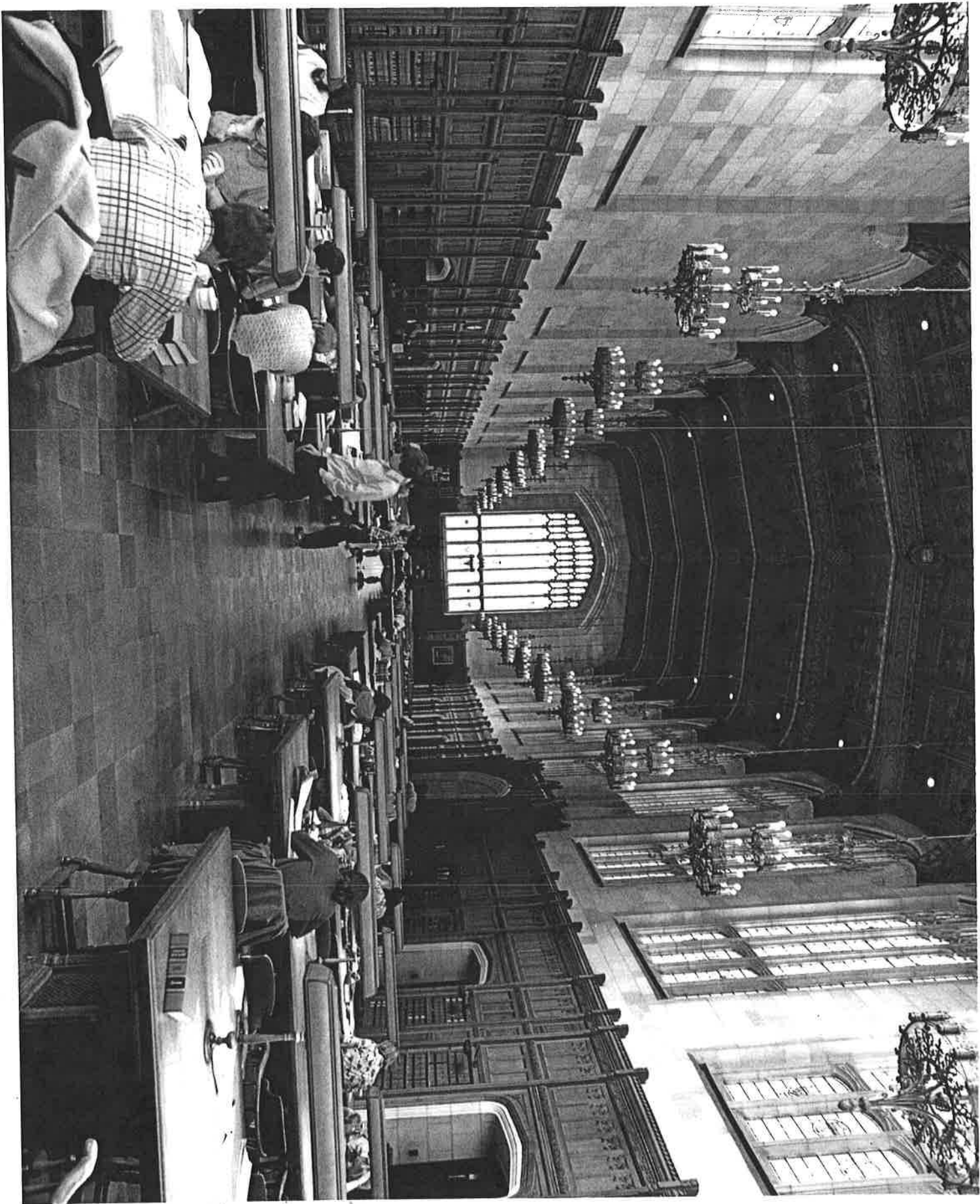
Washtenaw County

1. Horace H. Rackham Building
2. University of Michigan
Central Campus Historic
District
2. Ann Arbor, Michigan
3. Laurie K. Sommers
4. 1977
5. Michigan History Division
6. south facade
- 7.

21 027
JUN 15 1978

DEC 14 1977

UNIVERSITY OF MICHIGAN



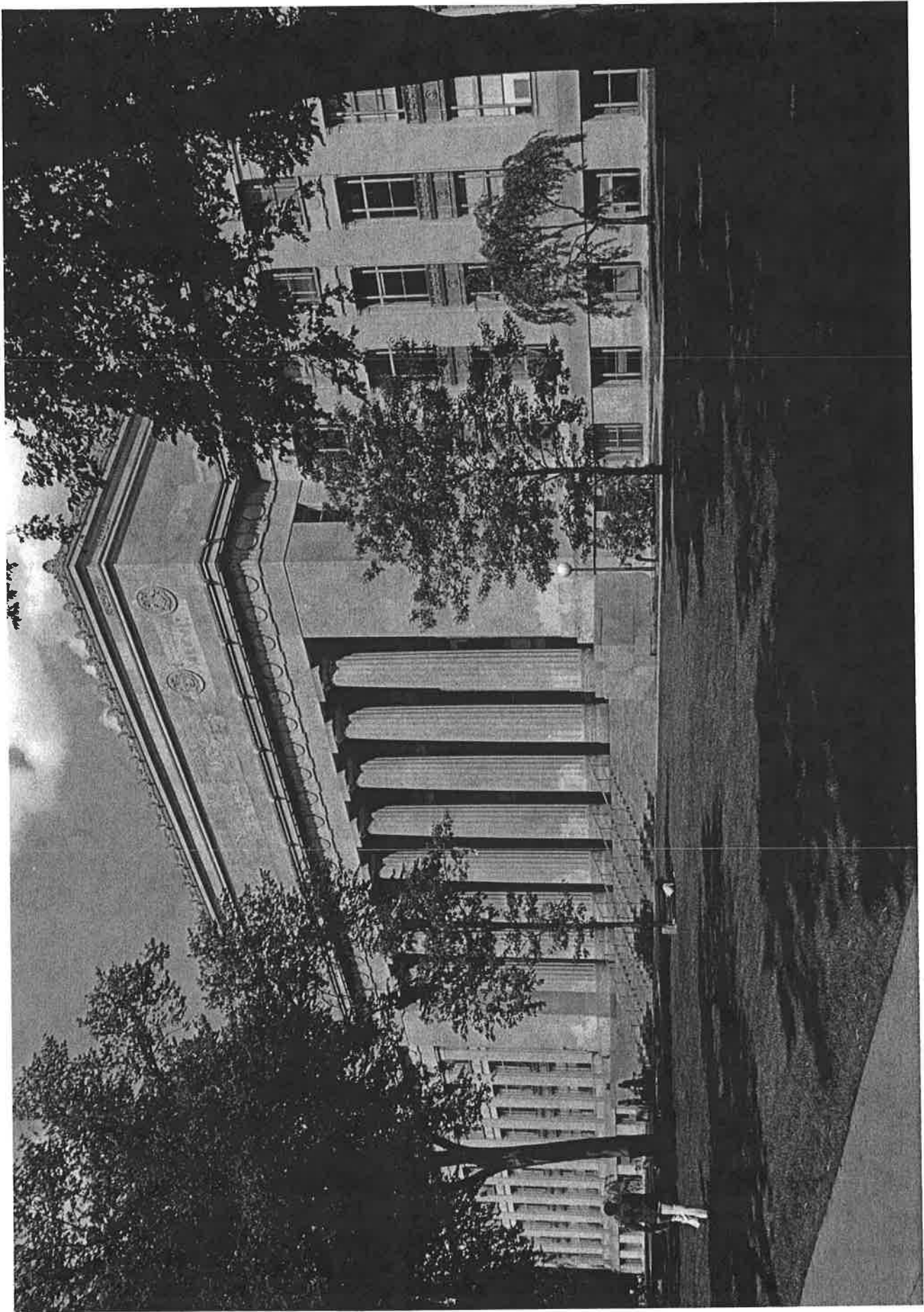
PROPERTY OF THE NATIONAL REGISTER

Washtenaw County

1. Law Quadrangle, Law Library
University of Michigan
Central Campus Historic
District
2. Ann Arbor, Michigan
3. University of Michigan
Information Service
4. 1975 UNIVERSITY OF MICHIGAN
5. University of Michigan
Information Service,
Ann Arbor MICHIGAN 48106
6. interior
7. #25c view 2 JUN 15 1978

22027

DEC 14 1977



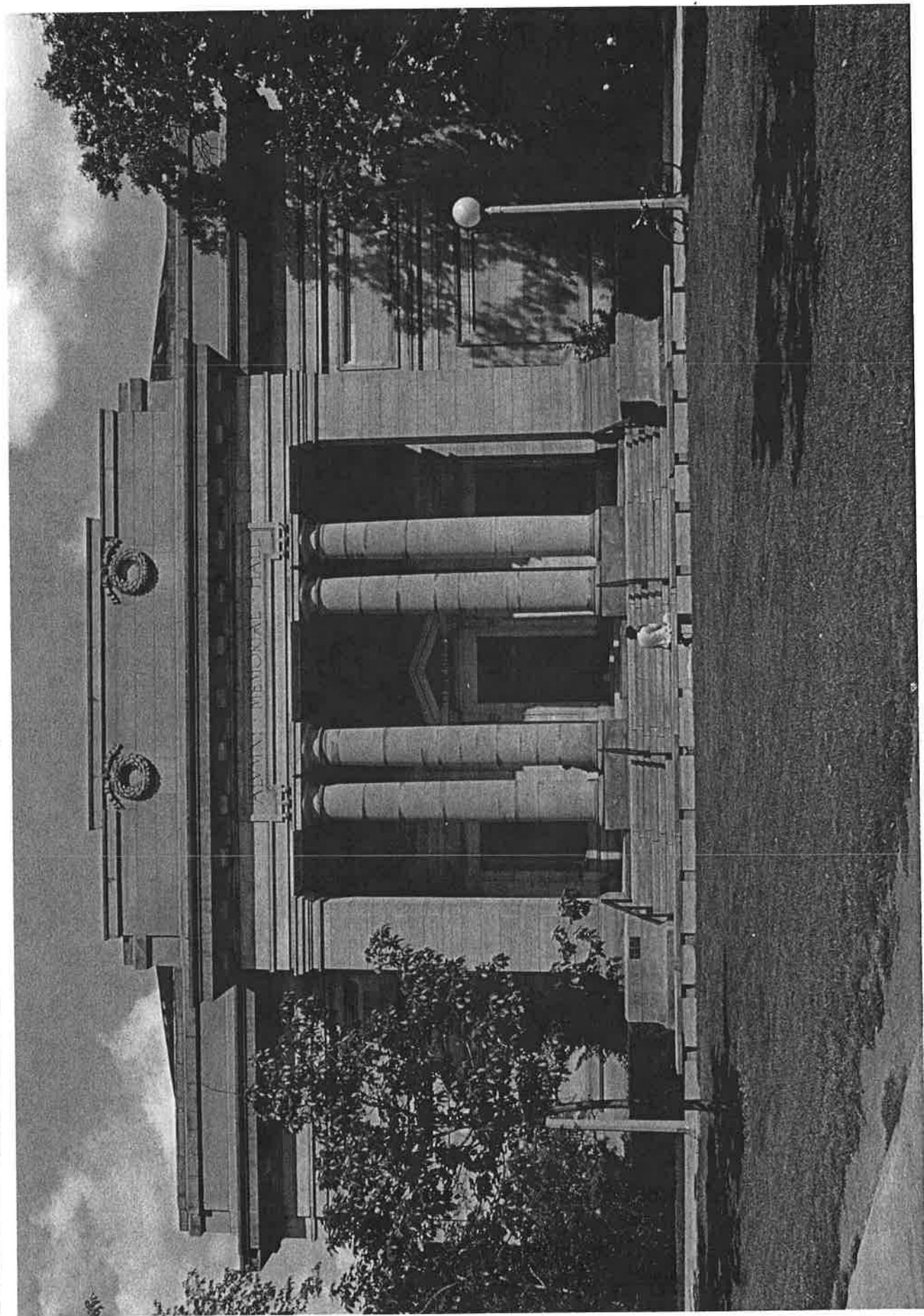
PROPERTY OF THE NATIONAL REGISTER

1. Angell Hall
University of Michigan
Central Campus Historic
District
2. Ann Arbor, Michigan
3. Laurie K. Sommers
4. 1977
5. Michigan History Division
6. west facade
7. #23 ~~0~~ 27

JUN 15 1978

DEC 14 1977

Washtenaw County



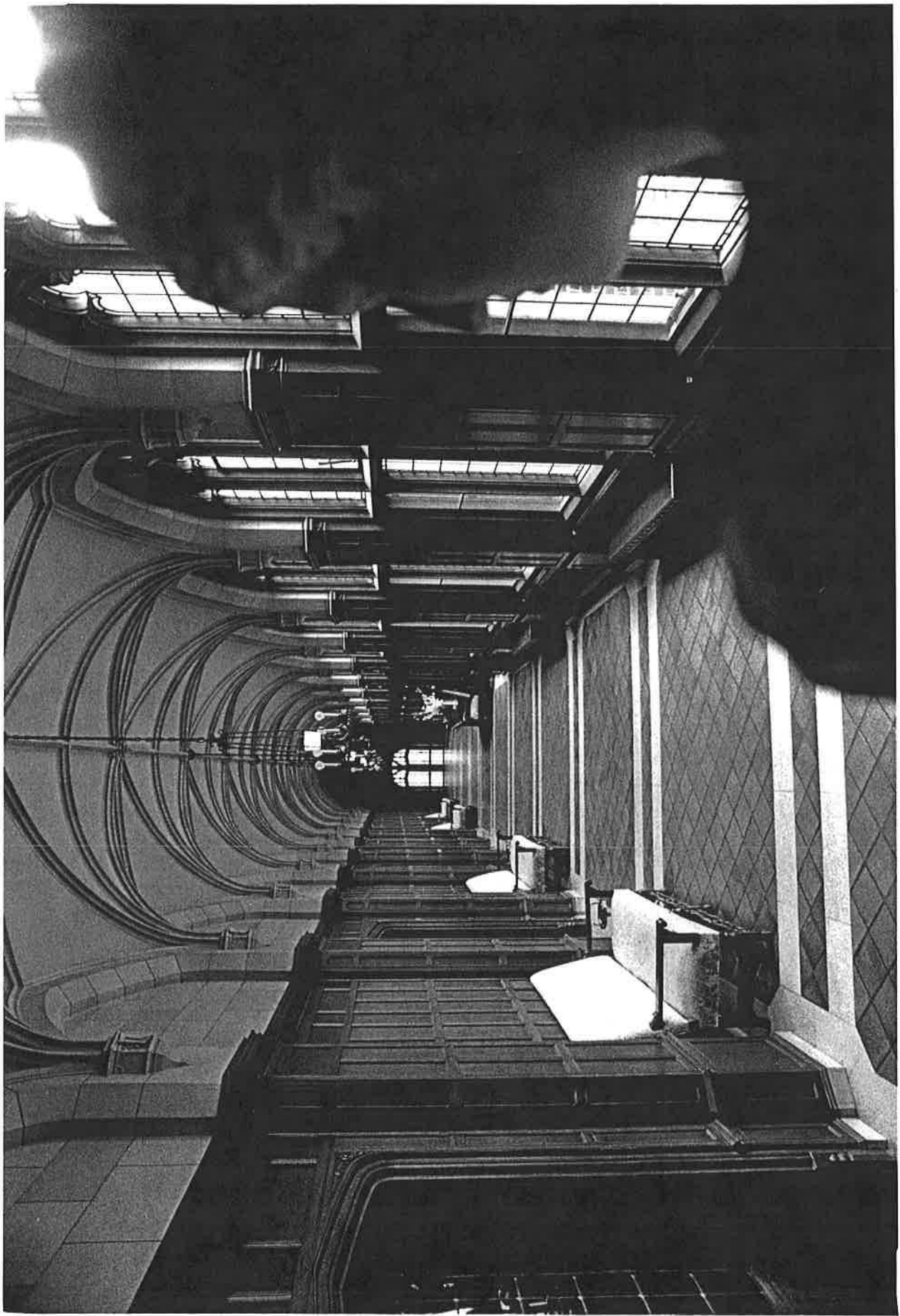
PROPERTY OF THE NATIONAL REGISTER

1. Alumni Memorial Hall
(Museum of Art)
University of Michigan
Central Campus Historic
District
2. Ann Arbor, Michigan
3. Laurie K. Sommers
4. 1977
5. Michigan History Division
6. west facade
7. #24 q 27

JUN 15 1978

DEC 14 1977

Washtenaw County



PROPERTY OF THE NATIONAL REGISTER

Washtenaw County

1. Martha Cook Residence
University of Michigan
Central Campus Historic
District
2. Ann Arbor, Michigan
3. University of Michigan
Information Service
4. 1973
5. University of Michigan
Information Service,
Ann Arbor
6. interior gallery
7. #26, view 3

227
JUN 15 1978

DEC 14 1977