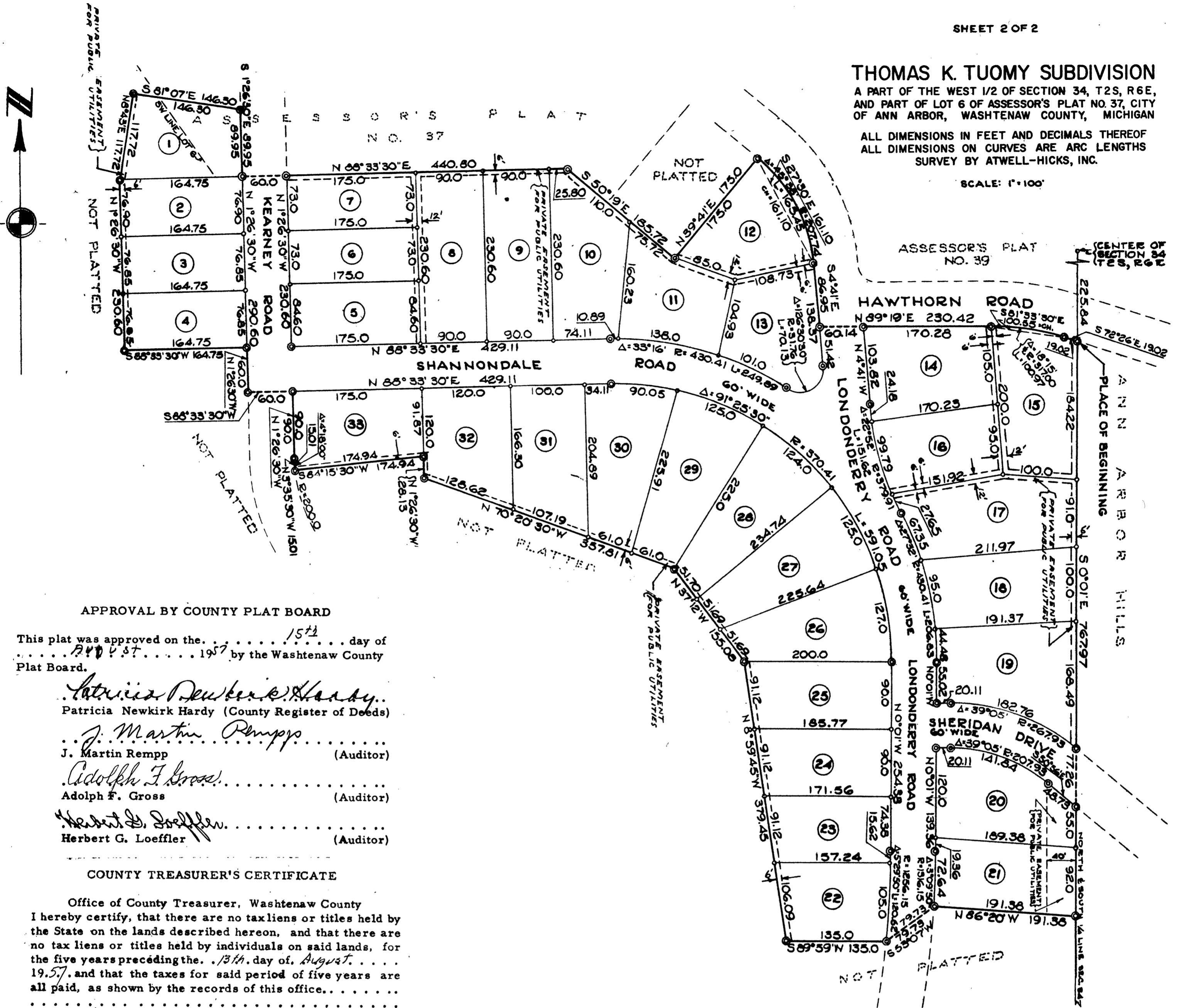


**THOMAS K. TUOMY SUBDIVISION**

A PART OF THE WEST 1/2 OF SECTION 34, T2S, R6E,  
 AND PART OF LOT 6 OF ASSESSOR'S PLAT NO. 37, CITY  
 OF ANN ARBOR, WASHTENAW COUNTY, MICHIGAN

ALL DIMENSIONS IN FEET AND DECIMALS THEREOF  
 ALL DIMENSIONS ON CURVES ARE ARC LENGTHS  
 SURVEY BY ATWELL-HICKS, INC.

SCALE: 1"=100'



**APPROVAL BY COUNTY PLAT BOARD**

This plat was approved on the 15<sup>th</sup> day of August, 1957 by the Washtenaw County Plat Board.

*Patricia Newkirk Hardy*  
 Patricia Newkirk Hardy (County Register of Deeds)

*J. Martin Rempp*  
 J. Martin Rempp (Auditor)

*Adolph F. Gross*  
 Adolph F. Gross (Auditor)

*Herbert G. Loeffler*  
 Herbert G. Loeffler (Auditor)

**COUNTY TREASURER'S CERTIFICATE**

Office of County Treasurer, Washtenaw County  
 I hereby certify, that there are no tax liens or titles held by the State on the lands described hereon, and that there are no tax liens or titles held by individuals on said lands, for the five years preceding the 15<sup>th</sup> day of August, 1957, and that the taxes for said period of five years are all paid, as shown by the records of this office.

This certificate does not apply to taxes, if any, now in process of collection by township, city or village collecting officers.

*W. F. Verner*  
 W. F. Verner (County Treasurer)

**SURVEYOR'S CERTIFICATE**

I hereby certify that the plat hereon delineated is a correct one and that permanent metal monuments consisting of bars not less than one-half inch in diameter and 36 inches in length, or shorter bars of not less than one-half inch in diameter lapped over each other at least 6 inches with an over-all length of not less than 36 inches, encased in a concrete cylinder at least 4 inches in diameter and 36 inches in depth have been placed at points marked thus (O) as thereon shown at all angles in the boundaries of the land platted, at all the intersections of lines of streets, and at the intersections of lines of streets with the boundaries of the plat as shown on said plat.

*Robert J. J. Jow*  
 Robert J. Jow  
 Registered Land Surveyor # 6998

**MUNICIPAL APPROVAL**

This plat was approved by the COMMON COUNCIL of the City of Ann Arbor at a meeting held July 8, 1957

*Fred J. Looker*  
 Fred J. Looker (Clerk)

**CERTIFICATE OF APPROVAL BY THE CITY PLANNING COMMISSION**

This plat was approved by the Planning Commission of the City of Ann Arbor, Michigan at a meeting held on the Twenty-Sixth day of June, 1957.

*John E. Swisher, Jr.*  
 John E. Swisher, Jr. (Chairman)  
*Leo P. Meyers*  
 Leo P. Meyers (Secretary)

**CITY CLERK'S CERTIFICATE**

Office of City Clerk, City of Ann Arbor  
 I hereby certify, that the width and depth of lots shown on this plat are in compliance with rules and regulation of the City of Ann Arbor and the requirements as to width and depth of Sec. 30 of Act 172, Public Acts of 1929 as amended by Act 186 Public Acts of 1954.

*Fred J. Looker*  
 Fred J. Looker (Clerk)

DEDICATION

ACKNOWLEDGMENT

KNOW ALL MEN BY THESE PRESENTS, that we Cornelius W. Tuomy, a single man Kathryn G. Tuomy, a single woman, Thomas E. Dolan and Jane H. Dolan his wife, Cecil J. Nesbitt and Ethel M. Nesbitt, his wife, Ray C. Killins and Bernadine H. Killins, his wife, Ralph F. Johns and Ethel A. Johns, his wife, Florence N. Groves, a widow and W. Louis Wenger and Esther Wenger, his wife, as proprietors, and the Regents of the University of Michigan, a Constitutional Corporation by Wilbur K. Pierpont Vice President and Herbert G. Watkins Secretary and Assistant Vice President; and the Ann Arbor Bank a Michigan Banking Corporation by Malcolm C. Taylor Executive Vice President and Cashier; and Ann Arbor Federal Savings and Loan Association, a corporation organized under the Home Owners Loan Act of 1933 of the United States of America by Frederick Schmid Vice President, and Gertrude E. Wenger Assistant Secretary, as mortgagee, have caused the land embraced in the annexed plat to be surveyed, laid out and platted to be known as THOMAS K. TUOMY SUBDIVISION a part of the West 1/2 of Section 34, T 2 S, R 6 E, and part of Lot 6 of Assessor's Plat No. 37, City of Ann Arbor, Washtenaw County, Michigan and that the Roads and Drives as shown on said plat are hereby dedicated to the use of the public.

STATE OF MICHIGAN )  
County of WASHTENAW ) ss.

On this 13 day of JUNE A.D. 1957, before me, a Notary Public in and for said County, personally came the above named Cornelius W. Tuomy, a single man, Kathryn G. Tuomy a single woman, known to me to be the persons who executed the above dedication, and acknowledged the same to be their free act and deed.

Frederick Schmid  
Notary Public, WASHTENAW County

My Commission expires Oct 16, 1957

THOMAS K. TUOMY SUBDIVISION

A PART OF THE WEST 1/2 OF SECTION 34, T2S, R6E, AND PART OF LOT 6 OF ASSESSOR'S PLAT NO. 37, CITY OF ANN ARBOR, WASHTENAW COUNTY, MICHIGAN

ALL DIMENSIONS IN FEET AND DECIMALS THEREOF ALL DIMENSIONS ON CURVES ARE ARC LENGTHS SURVEY BY ATWELL-HICKS, INC.

ACKNOWLEDGMENT

STATE OF MICHIGAN )  
County of Washtenaw ) ss.

On this 13 day of JUNE A.D. 1957, before me Cornelius W. Tuomy a Notary Public in and for said county appeared Malcolm C. Taylor to me personally known, who being by me duly sworn did say that he is the Executive Vice President and Cashier of the Ann Arbor Bank, a Michigan Banking corporation, and that the seal affixed to said instrument is the corporate seal of said corporation and that said instrument was signed and sealed in behalf of said corporation by authority of its Board of Directors and the said Malcolm C. Taylor acknowledged said instrument to be the free act and deed of said corporation.

Cornelius W. Tuomy  
Notary Public Washtenaw County

My Commission Expires February 3, 1961

Signed and Sealed in the Presence of:

Mary M. Minier (Witness) Cornelius W. Tuomy

Barbara J. Gordon (Witness) Kathryn G. Tuomy

Thomas E. Dolan

Jane H. Dolan

Cecil J. Nesbitt

Ethel M. Nesbitt

Ray C. Killins

Bernadine H. Killins

Ralph F. Johns

Ethel A. Johns

Florence N. Groves

W. Louis Wenger

Esther Wenger

Signed and Sealed in the Presence of:

E. A. Cummings (Witness)

R. G. Griffith (Witness)

Signed and Sealed in the Presence of:

Luella H. (Witness)

C. A. Maubach (Witness)

Signed and Sealed in the Presence of:

Helen J. (Witness)

Bernice A. Mayer (Witness)

REGENTS OF THE UNIVERSITY OF MICHIGAN

BY:

Wilbur K. Pierpont

Herbert G. Watkins

ANN ARBOR BANK

BY:

Malcolm C. Taylor

ANN ARBOR FEDERAL SAVINGS AND LOAN ASSOCIATION

BY:

Frederick Schmid

Gertrude E. Wenger

ACKNOWLEDGMENT

STATE OF MICHIGAN )  
County of WASHTENAW ) ss.

On this 13 day of JUNE A.D. 1957, before me, a Notary Public in and for said County, personally came the above named Thomas E. Dolan and Jane H. Dolan, Cecil J. Nesbitt and Ethel M. Nesbitt, Ray C. Killins and Bernadine H. Killins, Ralph F. Johns and Ethel A. Johns, Florence N. Groves, W. Louis Wenger and Esther Wenger, known to me to be the persons who executed the above dedication, and acknowledged the same to be their free act and deed.

Cornelius W. Tuomy  
Notary Public, WASHTENAW County

My Commission expires Feb 3, 1957

STATE OF MICHIGAN )  
County of Washtenaw ) ss.

On this 13 day of JUNE A.D. 1957, before me, Cornelius W. Tuomy, a Notary Public in and for said County appeared Frederick Schmid and Gertrude E. Wenger to me personally known, who being each by me duly sworn did say that they are the Vice President and Assistant Secretary respectively of Ann Arbor Federal Savings and Loan Association, a corporation organized under the Home Owners Loan Act of 1933 of the United States of America, and that the seal affixed to said instrument is the corporate seal of said corporation and the said instrument was signed and sealed in behalf of said corporation by authority of its Board of Directors and the said Frederick Schmid and Gertrude E. Wenger acknowledged said instrument to be the free act and deed of said corporation.

Cornelius W. Tuomy  
Notary Public Washtenaw County

My Commission expires Feb 3, 1961

DESCRIPTION OF LAND PLATTED

The land embraced in the annexed plat of THOMAS K. TUOMY SUBDIVISION a part of the West 1/2 of Section 34, T2S, R6E, and part of Lot 6 of Assessor's Plat No. 37, City of Ann Arbor, Washtenaw County, Michigan is described as follows:

Commencing at the center of Section 34, T2S, R6E, Ann Arbor Township, Washtenaw County, Michigan; thence along the North & South 1/2 line of said section S 0°-01' E 225.84 feet to a PLACE OF BEGINNING; thence continuing along the North & South 1/2 line of said section S 0°-01' E 767.97 feet; thence N 86°-20' W 191.38 feet; thence S 53°-07' W 79.73 feet; thence S 89°-59' W 135.0 feet; thence N 8°-59'-45" W 379.45 feet; thence N 37°-12' W 155.08 feet; thence N 70°-20'-30" W 357.81 feet; thence N 1°-26'-30" W 28.13 feet; thence S 84°-15'-30" W 174.94 feet; thence 15.01 feet in the arc of a circular curve concave to the East, radius 200.0 feet, chord N 3°-35'-30" W 15.01 feet; thence N 1°-26'-30" W 90.0 feet; thence S 88°-33'-30" W 60.0 feet; thence N 1°-26'-30" W 60.0 feet; thence S 88°-33'-30" W 164.75 feet; thence N 1°-26'-30" W 230.60 feet; thence N 8°-43' E 117.72 feet; thence S 81°-07' E 146.30 feet; thence S 1°-26'-30" E 89.95 feet; thence N 88°-33'-30" E 440.80 feet; thence S 50°-19' E 185.72 feet; thence N 39°-41' E 175.0 feet; thence 165.45 feet in the arc of a circular curve concave to the Southwest, radius 207.74 feet, chord S 27°-30' E 161.10 feet; thence S 4°-41' E 86.95 feet; thence N 89°-19' E 230.42 feet; thence 100.97 feet in the arc of a circular curve concave to the South, radius 317.00 feet, chord S 81°-33'-30" E 100.55 feet; thence S 72°-26' E 19.02 feet to the place of beginning, containing 33 lots numbered 1 through 33 inclusive.

ACKNOWLEDGMENT

STATE OF MICHIGAN )  
County of Washtenaw ) ss.

On this 17 day of JUNE A.D. 1957, before me Cornelius W. Tuomy a Notary Public in and for said county appeared Wilbur K. Pierpont and Herbert G. Watkins to me personally known, who being each by me duly sworn did say that they are the Vice President and Secretary and Assistant Vice President respectively of the Regents of the University of Michigan a Constitutional corporation, and that the seal affixed to said instrument is the corporate seal of said corporation and that said instrument was signed and sealed in behalf of said corporation by authority of said Regents of the University and the said Wilbur K. Pierpont and Herbert G. Watkins acknowledged said instrument to be the free act and deed of said University.

Cornelius W. Tuomy  
Notary Public Washtenaw County

My Commission expires February 3, 1961

I hereby certify this copy is a true copy of map or plat forwarded the Register of deeds for recording.

Date August 19 1957  
FILED IN AUDITOR GENERAL'S DEPT.

Date August 21 1957  
EXAMINED AND APPROVED

Date August 19 1957

Frank S. ... Auditor General

By D. S. ... Plat Engineer

COPY

Register's Office  
Washtenaw County, ss.

Plat of Thomas K. Tuomy Subdivision

Was Recorded this 20th day of August, 1957 at 10:30 AM, in Liber 14 of Plat

On Page 13 and 14

Patricia M. ... Registrar of Deeds

ORIGINAL ON FILE