

Washtenaw
Assessor's
Plat No 9
Feb 3rd 11:50
17 8 28 11:50
Plata
2
Jas Cummings

Feb 2-1928
J. L. Hull
Feb 6-1928
Geo L Hansen

ASSESSOR'S PLAT NO. 9.

IN THE
CITY OF ANN ARBOR
WASHTENAW COUNTY MICHIGAN

Scale 1 IN = 60 FT.

25178

Feb 2-1928
J. L. Hull

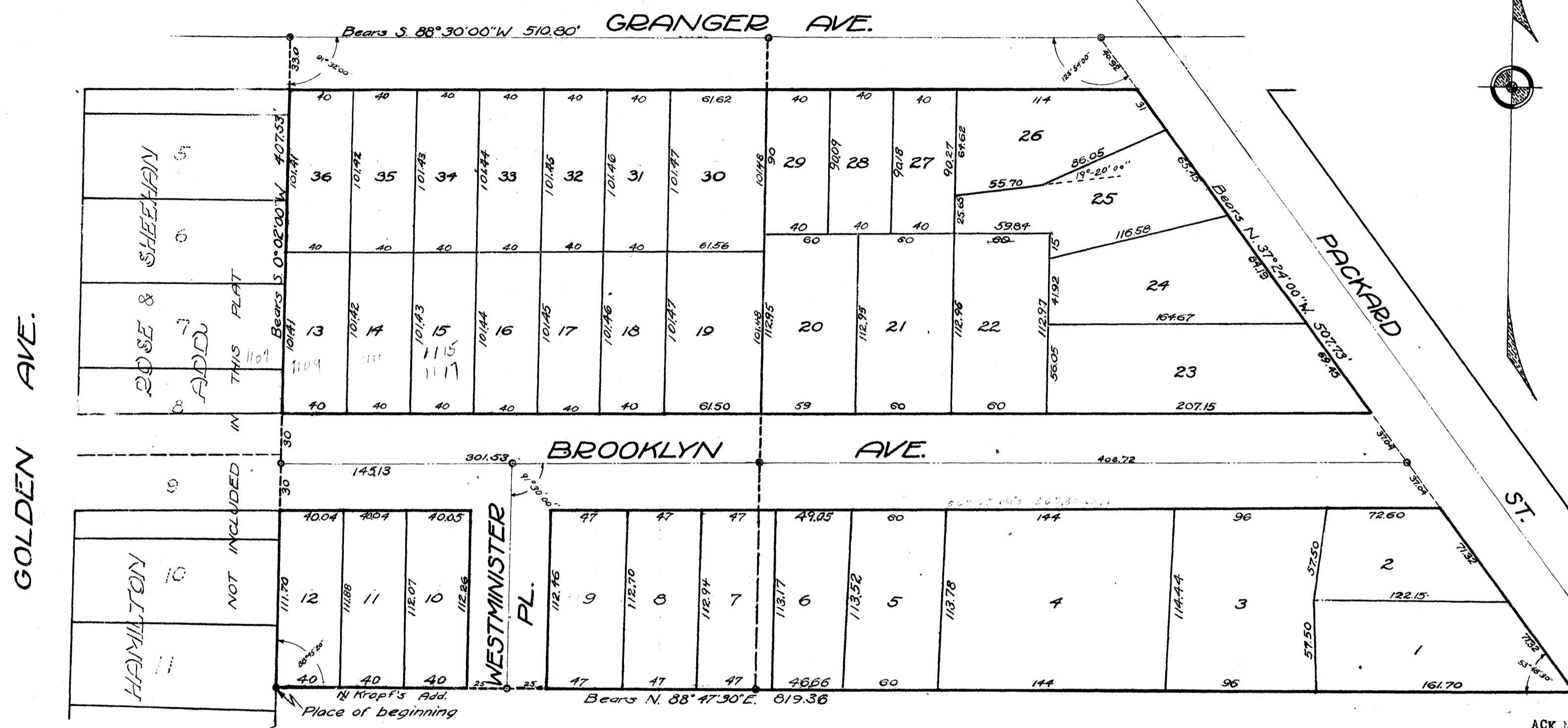
CERTIFICATE OF MUNICIPAL APPROVAL

This Plat was approved by the Common Council of the City of Ann Arbor, Washtenaw County, Michigan at a meeting held ... 16th day of ...
January ... 1928.
J. B. Reynolds
Clerk

This plat was approved by the Board of Public Works, of the City of Ann Arbor, Washtenaw County, Michigan at a meeting held ...
January ... 1928.
J. B. Reynolds
Clerk

CERTIFICATE OF APPROVAL
BY BOARD OF COUNTY AUDITORS

Approved by the Board of County Auditors of Washtenaw County, Michigan this ... 19 ... day of ...
January ... 1928.
J. A. O. ...
Chairman
Walter M. ...
E. L. ...



ACKNOWLEDGEMENT
STATE OF MICHIGAN
COUNTY OF WASHTENAW SS
On this ... day of January ... 1928, before me, a Notary Public, in and for said county, personally came the above named Herbert W. Crippen, Assessor of the city of Ann Arbor known to me to be the person who executed the above dedication, and acknowledged the same to be his free act and deed as such Assessor.
My Commission expires ...
Notary Public in and for Washtenaw County, Mich.

DESCRIPTION
The land embraced in the annexed "ASSESSOR'S PLAT NO. 9." is described as follows:
Commencing at the center of the southwest quarter of Section 33 Town 2 South Range 6 East, thence north 0° 02' 00" East 759.59 feet along the east line of Hamilton, Rose and Sheehan's Addition to the City of Ann Arbor, FOR A PLACE OF BEGINNING; thence North 88° 47' 30" East 819.36 feet along the North line of Krapf's Addition to its intersection with the southwest line of Packard St.; thence North 37° 24' 00" West 507.73 feet along the southwest line of Packard St. to its intersection with the center line of Granger Ave.; Thence South 88° 30' 00" West 510.80 feet along the center line of Granger Ave. to its intersection with east line of said Hamilton, Rose and Sheehan's Addition; thence South 0° 02' 00" West 407.53 feet along the Eastline of Hamilton, Rose and Sheehan's Addition to its intersection with the North line of Krapf's Addition, the place of beginning. The land described is part of the south west quarter of Section 33 Town 2 South Range 6 East.

SURVEYOR'S CERTIFICATE
I hereby certify that the plat hereon delineated is a correct one and that permanent metal monuments of not less than one inch in diameter and fifteen inches in length set in a concrete base at least four inches in diameter and forty-eight inches in depth have been placed at points marked thus: @ as thereon shown at all angles in the boundaries of the land platted, at all the intersections of streets, intersections of alleys or of streets and alleys and at the intersections of streets and alleys with the boundaries of the plat as shown on said plat.
George H. Sandenburgh
Registered Civil Engineer

DEDICATION
KNOW ALL MEN BY THESE PRESENTS: That I, Herbert W. Crippen, Assessor of the City of Ann Arbor, Washtenaw County, Michigan, by virtue of the authority in me vested by Section 3350, Compiled Laws of 1915 as amended, having been duly authorized by the Common Council of the City of Ann Arbor have caused the land described in the annexed plat to be surveyed, laid out, and platted, to be known as "ASSESSOR'S PLAT NO. 9." of the City of Ann Arbor and that the streets and alleys as shown on said plat are hereby dedicated to the use of the public.
Witnesses:
Norman E. Cook
Herbert W. Crippen
Assessor of the City of Ann Arbor

8867/10/20
1 40 1