

0-17-51

DEDICATION

KNOW ALL MEN BY THESE PRESENTS, that we A. P. W. Hewett, Inc.

Michigan corporation by Alton P. W. Hewett, President, and Edna Hewett, Secretary, as principals, have caused the land embraced in the annexed plat to be surveyed, laid out and platted to be known as "Pauline Acres Subdivision" part of the NW 1/4 of the NE 1/4 of Section 31, Town 2 South, Range 6 East, City of Ann Arbor, Washtenaw County, Michigan.

and that the streets and alleys as shown on said plat are hereby dedicated to the use of the Public.

Signed and Sealed in the Presence of: A. P. W. Hewett, Inc. H. S. Hicks (Witness), Alton P. W. Hewett (President), E. P. Hicks (Witness), Edna Hewett (Secretary)

ACKNOWLEDGMENT

STATE OF Michigan County of Washtenaw

On this 5th day of July, A.D. 1951, before me, Alton P. W. Hewett and Edna Hewett, Notary Public in and for said county appeared Alton P. W. Hewett and Edna Hewett.

to me personally known, who being each by me duly sworn did say that they are the President and Secretary respectively of the A. P. W. Hewett, Inc.

Michigan corporation, and that the seal affixed to said instrument is the corporate seal of said corporation and that said instrument was signed and sealed in behalf of said corporation by authority of its Board of Directors and the said Alton P. W. Hewett and Edna Hewett acknowledged said instrument to be the free act and deed of said corporation.

Notary Public, Washtenaw County My Commission expires June 8, 1954

DESCRIPTION OF LAND PLATTED

The land embraced in the annexed plat of "Pauline Acres Subdivision", part of the NW 1/4 of Section 31, Town 2 South, Range 6 East, City of Ann Arbor, Washtenaw County, Michigan is described as follows: Commencing at the northeast corner of Sec. 31, Town 2 South, Range 6 East, Meridian of Michigan, and running thence north 89°48' west along the north line of said Section 552.6 feet to the NW corner of the Plat of Eberwhite 2nd Addition to the City of Ann Arbor for a PLACE OF BEGINNING: thence south 0°18'30" east along the west line of said Eberwhite Second Addition 803.91 feet; thence south 88°54' west 107.4 feet; thence south 11°19' west 150.89 feet; thence south 1°06' east 170.48 feet to the center line of Pauline Boulevard as now staked out and used; thence south 88°54' west 143.38 feet along the center line of said Pauline Boulevard; thence north 2°15' east 358.0 feet to the beginning of a circular curve to the left of radius 32.76 feet; thence northerly and westerly along the arc of said curve subtended by a chord which bears north 44°17'30" west 47.56 feet to the point of tangency of said curve; thence south 89°10' west 129.3 feet; thence north 0°14' west 739.02 feet to the north line of said Section; thence south 89°48'30" east along the north line of said Section 425.1 feet to the place of beginning, being part of the northeast quarter of said Section.

SURVEYOR'S CERTIFICATE

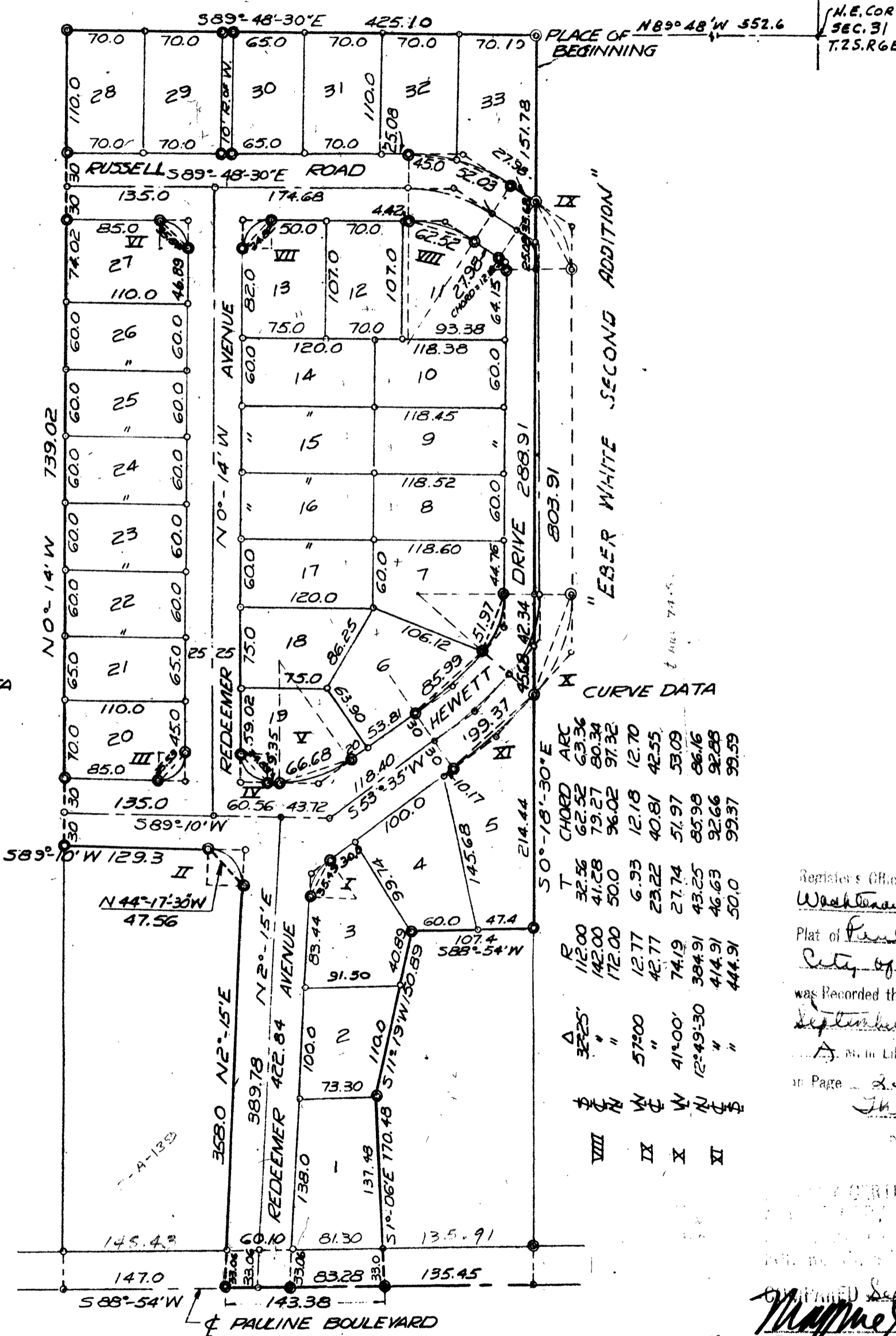
I hereby certify that the plat hereon delineated is a correct one and that permanent metal monuments consisting of bars not less than one-half inch in diameter and 48 inches in length, or shorter bars of not less than one-half inch in diameter lapped over each other at least 6 inches with an over-all length of not less than 48 inches, encased in a concrete cylinder at least 4 inches in diameter and 48 inches in depth have been placed at points marked thus (.....) as thereon shown at all angles in the boundaries of the land platted, at all the intersections of streets, intersections of alleys, or of streets and alleys, and at the intersections of streets and alleys with the boundaries of the plat as shown on said plat.

Herbert S. Hicks Registered Land Surveyor or Registered Professional Engineer

"PAULINE ACRES SUBDIVISION"

PART OF THE NW 1/4 OF THE NE 1/4 OF SECTION 31, TOWN 2 SOUTH, RANGE 6 EAST CITY OF ANN ARBOR WASHTENAW COUNTY, MICHIGAN SCALE: ONE INCH = 100 FEET

NOTE: ALL DIMENSIONS ARE IN FEET AND DECIMALS THEREOF



SURVEYED BY ATWELL-HICKS INCORPORATED

MUNICIPAL APPROVAL Board of Public Works This plat was approved by the Board of Public Works of the City of Ann Arbor at a meeting held August 6, 1951. Fred J. Looker (Clerk)

APPROVAL BY BOARD OF COUNTY AUDITORS Approved by the Board of County Auditors of Washtenaw County, Michigan, this 31st day of August, 1951. J. Martin Rempp (Chairman), John E. Wagoner, Adolph F. Gross

CERTIFICATE OF APPROVAL BY THE CITY PLANNING COMMISSION This plat was approved by the planning Commission of the City of Ann Arbor at a meeting held 26 JUNE 1951. Frederick M. McOmber, Chairman, William G. Nally, Secretary

COUNTY TREASURER'S CERTIFICATE Office of County Treasurer, Washtenaw County. I hereby certify that there are no tax liens or titles held by the State on the lands described hereon, and that there are no tax liens or titles held by individuals on said lands, for the five years preceding the 5th day of July, 1951, and that the taxes for said period of five years are all paid, as shown by the records of this office. W. F. Verner (County Treasurer)

Recorded this 17th day of September, A.D. 1951 at 1:44 P.M. in Liber 111 of Plat 32. Thomas A. City Clerk. FILED IN AUDITOR GENERAL'S DEPT. Examined and Approved August 14, 1951 Mayme Jewell Purdy Deputy Auditor General

1 OF 1 1561/10/10 09/18/1951 PAULINE ACRES SUBDIVISION PAGE 11