

UNPLATTED
RECORDED AS 500'01"W
LIBER 12, PAGE 29150
MARTIN ACRES NO. 2

GARDEN HOMES SUBDIVISION
UNPLATTED
MAPLE ROAD 800 FT. WIDE
N 1° 24' 25" E 1639.90 TO Δ

GARDEN HOMES PARK SUBDIVISION

AN URBAN RENEWAL PLAT

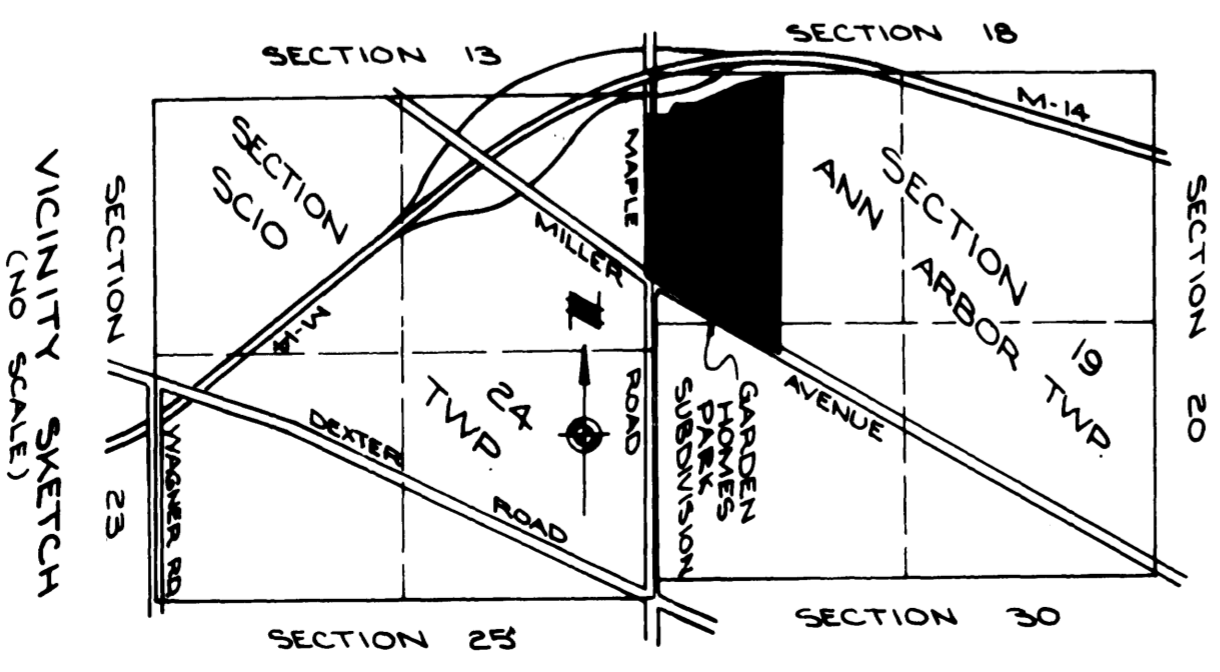
A SUBDIVISION OF PART OF THE WEST 1/2 OF SECTION 19, T25, R56, ANN ARBOR TOWNSHIP, AND PART OF THE NE 1/4 OF SECTION 24, T25, R55, SCIO TOWNSHIP, CITY OF ANN ARBOR, WASHTENAW COUNTY, STATE OF MICHIGAN

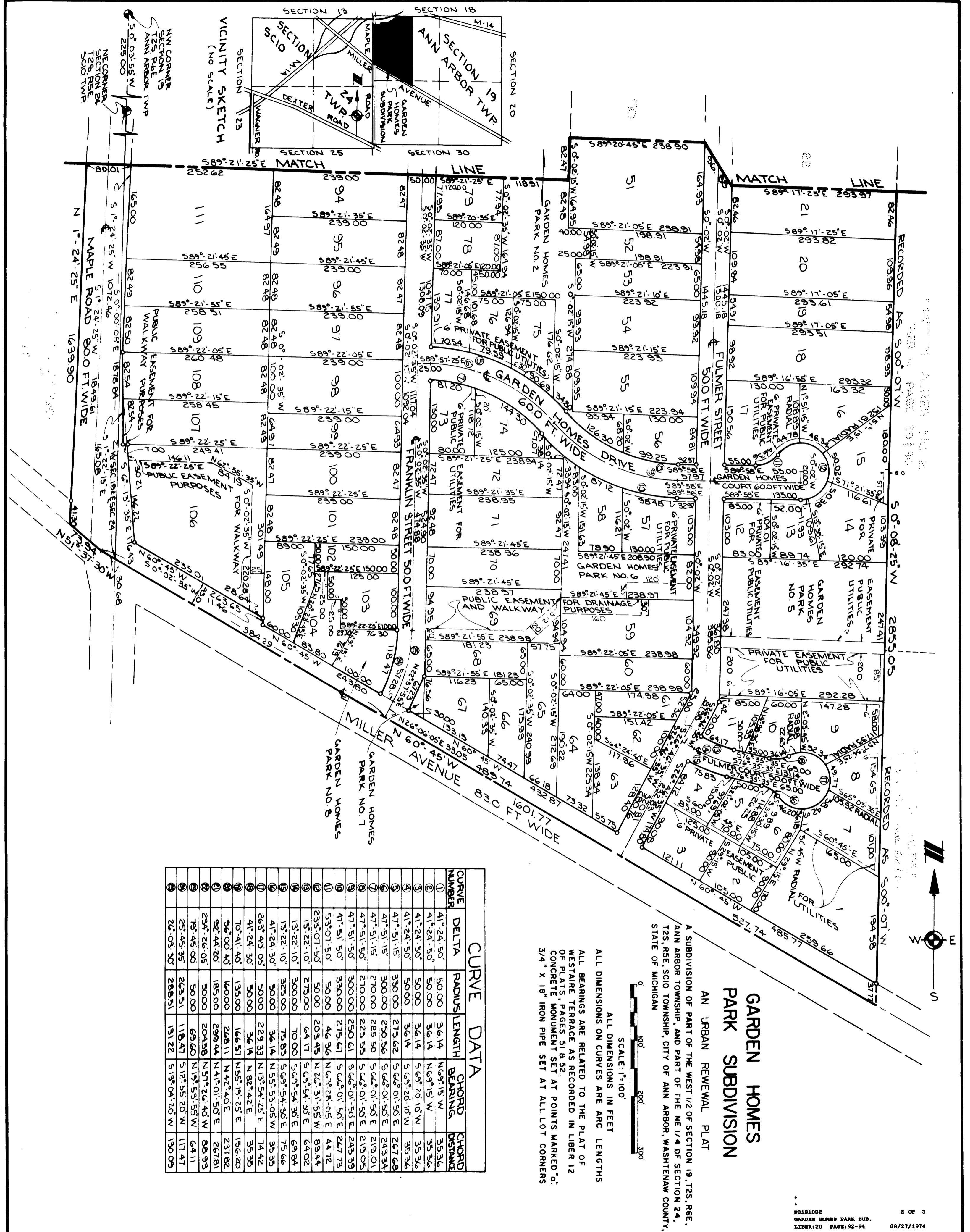
SCALE: 1"=100'

ALL DIMENSIONS IN FEET
ALL DIMENSIONS ON CURVES ARE ARC LENGTHS
ALL BEARINGS ARE RELATED TO THE PLAT OF WESTAIRE TERRACE AS RECORDED IN LIBER 12 OF PLATS, PAGES 518-52.
CONCRETE MONUMENT SET AT POINTS MARKED "O"
3/4" X 18" IRON PIPE SET AT ALL LOT CORNERS

90181001
GARDEN HOMES PARK SUB.
LIBER: 20 PAGE: 92-94
08/27/1974

1 OF 3





GARDEN HOMES PARK SUBDIVISION

AN URBAN REWELAL PLAT
A SUBDIVISION OF PART OF THE WEST 1/2 OF SECTION 19, T2S, R6E,
ANN ARBOR TOWNSHIP, AND PART OF THE NE 1/4 OF SECTION 24,
T2S, R6E, SCIO TOWNSHIP, CITY OF ANN ARBOR, WASHTEWAW COUNTY,
STATE OF MICHIGAN

SCALE: 1"=100'
ALL DIMENSIONS IN FEET
ALL DIMENSIONS ON CURVES ARE ARC LENGTHS

ALL BEARINGS ARE RELATED TO THE PLAT OF WESTFARE TERRACE AS RECORDED IN LIBER 12 OF PLATS, PAGES 51 & 52. CONCRETE MONUMENT SET AT POINTS MARKED "O". 3/4" X 18" IRON PIPE SET AT ALL LOT CORNERS

CURVE DATA

CURVE NUMBER	DELTA	RADIUS	LENGTH	CHORD BEARING	CHORD DISTANCE
1	41°24'50"	50.00	36.14	N69°15'W	35.36
2	41°24'50"	50.00	36.14	N69°15'W	35.36
3	41°24'50"	50.00	36.14	N69°20'10"W	35.36
4	41°24'50"	50.00	36.14	N69°20'10"W	35.36
5	47°51'15"	330.00	275.62	S66°01'50"E	267.68
6	47°51'15"	300.00	250.56	S66°01'50"E	243.34
7	47°51'15"	270.00	225.50	S66°01'50"E	219.01
8	47°51'50"	270.00	225.50	S66°01'50"E	219.05
9	47°51'50"	300.00	250.61	S66°01'50"E	243.39
10	47°51'50"	330.00	275.67	S66°01'50"E	267.73
11	53°07'50"	50.00	46.36	N63°28'05"E	44.72
12	233°07'50"	50.00	203.45	N26°31'55"W	89.44
13	13°22'10"	275.00	64.17	S69°54'30"E	64.02
14	13°22'10"	300.00	70.00	S69°54'30"E	69.84
15	13°22'10"	325.00	75.83	S69°54'30"E	75.66
16	41°24'30"	50.00	36.14	N55°53'05"E	35.35
17	263°49'05"	50.00	229.33	N13°54'25"E	74.42
18	41°24'30"	50.00	36.14	N82°42'E	35.35
19	70°41'40"	135.00	166.57	N55°19'25"E	156.20
20	96°00'40"	160.00	268.11	N42°40'E	231.82
21	92°44'20"	185.00	299.44	N41°01'50"E	267.81
22	234°26'05"	50.00	204.58	N57°26'40"W	88.93
23	75°45'00"	50.00	69.60	N15°53'55"W	64.11
24	25°45'35"	263.51	118.47	S12°55'20"W	117.47
25	22°03'30"	288.51	131.22	S13°04'20"W	130.09

SURVEYOR'S CERTIFICATE

I, John L. Snyder, surveyor, certify:

That I have surveyed, divided and mapped the land shown on this plat, described as follows: GARDEN HOMES PARK SUBDIVISION, AN URBAN RENEWAL PLAT, a subdivision of part of the West 1/2 of Section 19, T2S, R6E, Ann Arbor Township, and part of the NE 1/4 of Section 24, T2S, R5E, Scio Township, City of Ann Arbor, Washtenaw County, State of Michigan. Commencing at the Northeast corner of Section 24, T2S, R5E, Scio Township, Washtenaw County, Michigan; thence along the center line of Maple Road, S 1°-24'-25" W 179.08 feet for a PLACE OF BEGINNING; thence S 89°-19'-45" E 169.46 feet; thence N 43°-34'-30" E 136.47 feet; thence S 89°-18'-55" E 202.92 feet; thence N 66°-36'-05" E 647.02 feet; thence N 83°-35'-40" E 324.01 feet; thence S 0°-08'-25" W 2855.05 feet; thence N 60°-45' W 1601.77 feet; thence N 51°-37'-30" W 73.94 feet; thence N 1°-24'-25" E 1639.90 feet; thence S 89°-19'-45" E 40.0 feet to the Place of Beginning, containing 8 public parks and 128 lots numbered 1 through 128 inclusive, containing 74.55 acres of land more or less.

That I have made such survey, land-division and plat by the direction of the owners of such land.

That such plat is a correct representation of all the exterior boundaries of the land surveyed and the subdivision of it.

That the required monuments and lot markers have been located in the ground or that surety has been deposited with the municipality, as required by Section 125 of the Act.

That the accuracy of survey is within the limits required by Section 126 of the Act.

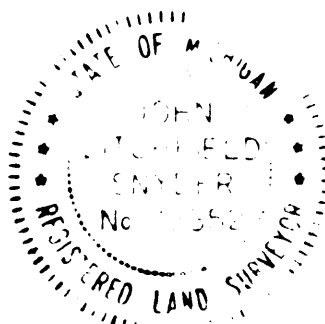
That the bearings shown on the plat are expressed as required by Section 126(3) of the Act and as explained in the legend.

April 11, 1974

ATWELL-HICKS, INC.

John L. Snyder

John L. Snyder, Vice-President Registered Surveyor No. 13352 110 North First Street Ann Arbor, Michigan 48108



PROPRIETOR'S CERTIFICATE

THE CITY OF ANN ARBOR, A MICHIGAN MUNICIPAL CORPORATION, THROUGH ITS NEIGHBORHOOD DEVELOPMENT PROGRAM, DULY ORGANIZED AND EXISTING UNDER THE LAWS OF THE STATE OF MICHIGAN AND IN COMPLIANCE WITH SECTION 5A OF ACT 344 OF PUBLIC ACT OF 1945 AS PRESENTED, BY JAMES E. STEPHENSON, MAYOR, JEROME S. WEISS, CITY CLERK AND PHILIP B. WARGELIN, NEIGHBORHOOD DEVELOPMENT PROGRAM DIRECTOR AS PROPRIETOR, HAS CAUSED THE LAND TO BE SURVEYED, DIVIDED, MAPPED AND DEDICATED AS REPRESENTED ON THIS PLAT AND THAT THE AVENUE, ROADS, STREETS, DRIVE, COURTS AND GARDEN HOMES PARKS NO. 1 THROUGH NO. 8 ARE FOR THE USE OF THE PUBLIC, THAT THE PUBLIC UTILITIES EASEMENTS ARE PRIVATE EASEMENTS AND THAT THE PUBLIC EASEMENTS FOR WALKWAY PURPOSES ARE PUBLIC EASEMENTS AND THAT ALL OTHER EASEMENTS ARE FOR THE USES SHOWN ON THE PLAT, ALSO THE NECESSARY RIGHTS TO ALL HIGHWAYS, STREETS, ALLEYS, AND PUBLIC PLACES, INCLUDING PARKS, GREEN BELTS AND BUFFER STRIPS, HAVE BEEN ACQUIRED BY THE MUNICIPALITY BY PURCHASE, DEDICATION, CONDEMNATION OR ADVERSE POSSESSION FOR PUBLIC USE, PRIOR TO THE MAKING OF THE URBAN RENEWAL PLAT.

City of Ann Arbor City Hall Ann Arbor, Michigan 48108

Pat Weaver Witness

James E. Stephenson Mayor

Laurie Wargelin Witness

Jerome S. Weiss, City Clerk

Philip B. Wargelin Neighborhood Development Program Director

ACKNOWLEDGMENT

STATE OF MICHIGAN) County of Washtenaw) ss.

Personally came before me this 18 day of April A.D., 1974, James E. Stephenson, Mayor, Jerome S. Weiss, City Clerk, and Philip B. Wargelin, Neighborhood Development Program Director, of the above named Michigan Municipal Corporation through its Neighborhood Development Program, to me known to be the persons who executed the foregoing instrument, and to me known to be such Mayor, City Clerk and Neighborhood Development Program Director of said Corporation, and acknowledged that they executed the foregoing instrument as such officers as the free act and deed of said Corporation by its authority.

Heleen I. Clark

Notary Public, Washtenaw County, Michigan My Commission expires 11-2-77

COUNTY DRAIN COMMISSIONER'S CERTIFICATE

Approved on 23 APRIL 1974 as complying with Section 192 of Act 288, P. A. 1967, and the applicable rules and regulations published by my office in the County of Washtenaw.

JEROME K. FULTON, WASHTENAW COUNTY DRAIN COMMISSIONER BY: THOMAS E. BLETCHER DEPUTY DRAIN COMMISSIONER

Thomas E. Bletcher

CERTIFICATE OF APPROVAL BY THE CITY PLANNING COMMISSION

This plat was approved by the Planning Commission of the City of Ann Arbor, Michigan at a meeting held on the 23rd day of APRIL, 1974.

John R. Laird, Chairman

Robert L. Potts, Secretary

CERTIFICATE OF MUNICIPAL APPROVAL

I certify that this plat was approved by City Council of the City of Ann Arbor, at a meeting held MAY 6, 1974 and was reviewed and found to be in compliance with Act 288, P. A. of 1967. The minimum lot width and area prescribed in Act 288, P. A. 1967 have been waived and the subdivision is serviced by public sewers and public water or is accessible thereto. The City of Ann Arbor has legally adopted zoning and subdivision control ordinances which specify lot widths and areas.

Jerome S. Weiss, City Clerk

GARDEN HOMES PARK SUBDIVISION

AN URBAN RENEWAL PLAT

A SUBDIVISION OF PART OF THE WEST 1/2 OF SECTION 19, T2S, R6E, ANN ARBOR TOWNSHIP, AND PART OF THE NE 1/4 OF SECTION 24, T2S, R5E, SCIO TOWNSHIP, CITY OF ANN ARBOR, WASHTENAW COUNTY, STATE OF MICHIGAN

COUNTY PLAT BOARD CERTIFICATE

This plat has been reviewed and is approved by the Washtenaw County Plat Board on June 12, 1974 as being in compliance with all of the provisions of Act 288, P. A. 1967, and the Plat Board's applicable rules and regulations.

Patricia Newkirk Hardy Register of Deeds

Robert M. Harrison, County Clerk

Hilary E. L. Goddard, County Treasurer

CERTIFICATE OF DEPARTMENT OF STATE HIGHWAYS AND TRANSPORTATION

Approved on 1 July 1974 as complying with Act 288, P. A. 1967 and the applicable published rules and regulations of the Department of State Highways.

MICHIGAN STATE HIGHWAY COMMISSION

John E. Glab Chief Deputy Director

RECORDING CERTIFICATE

STATE OF MICHIGAN)

Washtenaw County)

This plat was received for record on the 27th day of August A. D., 1974 at 9:05 a. M. recorded in Liber 20 of Plats on Pages 92-99.

Patricia Newkirk Hardy, Register of Deeds

Certified true copy of Recorded plat

Richard E. Loman

ALLISON GREEN STATE TREASURER

Richard E. Loman - Plat Examiner

Date September 12, 1974