

# ZAHN SUBDIVISION

OF PART OF THE N.W. 1/4 SEC. 30 T2S, R6E,  
CITY OF ANN ARBOR, WASHTENAW COUNTY, MICHIGAN



SCALE: 1" = 100'

ALL DIMENSIONS IN FEET AND DECIMALS THEREOF  
ALL DIMENSIONS ON CURVES ARE ARC LENGTHS  
SURVEY BY ATWELL-HICKS, INC.

COPY  
Register's Office  
Washtenaw County, ss.

Plot of Zahn Subdivision  
City of Ann Arbor

was Recorded this 6th day of  
June 1956 at 9:48  
A.M. in Lib. 13 of Plat

OR Page 42

Patricia Newkirk Hardy  
County Register of Deeds

I hereby certify this copy is a true copy  
of plat forwarded the Reg. for recording.

Date June 4, 1956  
FILED IN AUDITOR GENERAL'S

Date June 25, 1956  
EXAMINED AND APPROVED

Date June 4, 1956  
Auditor Gen.

By S. L. Mac

### DEDICATION

ALL MEN BY THESE PRESENTS, that we Harold J. Zahn, Luella R. Zahn, his wife, and Kurt Lange, Irma K. Zahn, his wife, have caused the land embraced in the annexed plat to be surveyed, laid out and platted, to be known as ZAHN SUBDIVISION of part of the N. W. 1/4 Sec. 30 T 2 S, City of Ann Arbor, Washtenaw County, Michigan and the streets and avenues as shown on said plat are hereby dedicated to the use of the public.

and Sealed in the presence of:

Attest: Harold J. Zahn  
(Witness) Harold J. Zahn  
Luella R. Zahn  
(Witness) Luella R. Zahn  
Kurt Lange  
(Witness) Kurt Lange  
Irma K. Lange  
(Witness) Irma K. Lange

### MUNICIPAL APPROVAL

This plat was approved by the COMMON COUNCIL of the City of Ann Arbor at a meeting held May 21, 1956.

Fred J. Looker  
(Clerk)

### APPROVAL BY COUNTY PLAT BOARD

This plat was approved on the 24th day of May, 1956 by the Washtenaw County Plat Board.

Patricia Newkirk Hardy (County Register of Deeds)  
J. Martin Rempp (Auditor)  
Adolph F. Gross (Auditor)  
Herbert G. Loeffler (Auditor)

### CERTIFICATE AS TO STATE TRUNK LINE OR FEDERAL AID ROADS

We hereby certify that said plat appears to include land located on a state trunk line or federal aid road.

Patricia Newkirk Hardy (County Register of Deeds)  
J. Martin Rempp (Auditor)  
Adolph F. Gross (Auditor)  
Herbert G. Loeffler (Auditor)

### COUNTY TREASURER'S CERTIFICATE

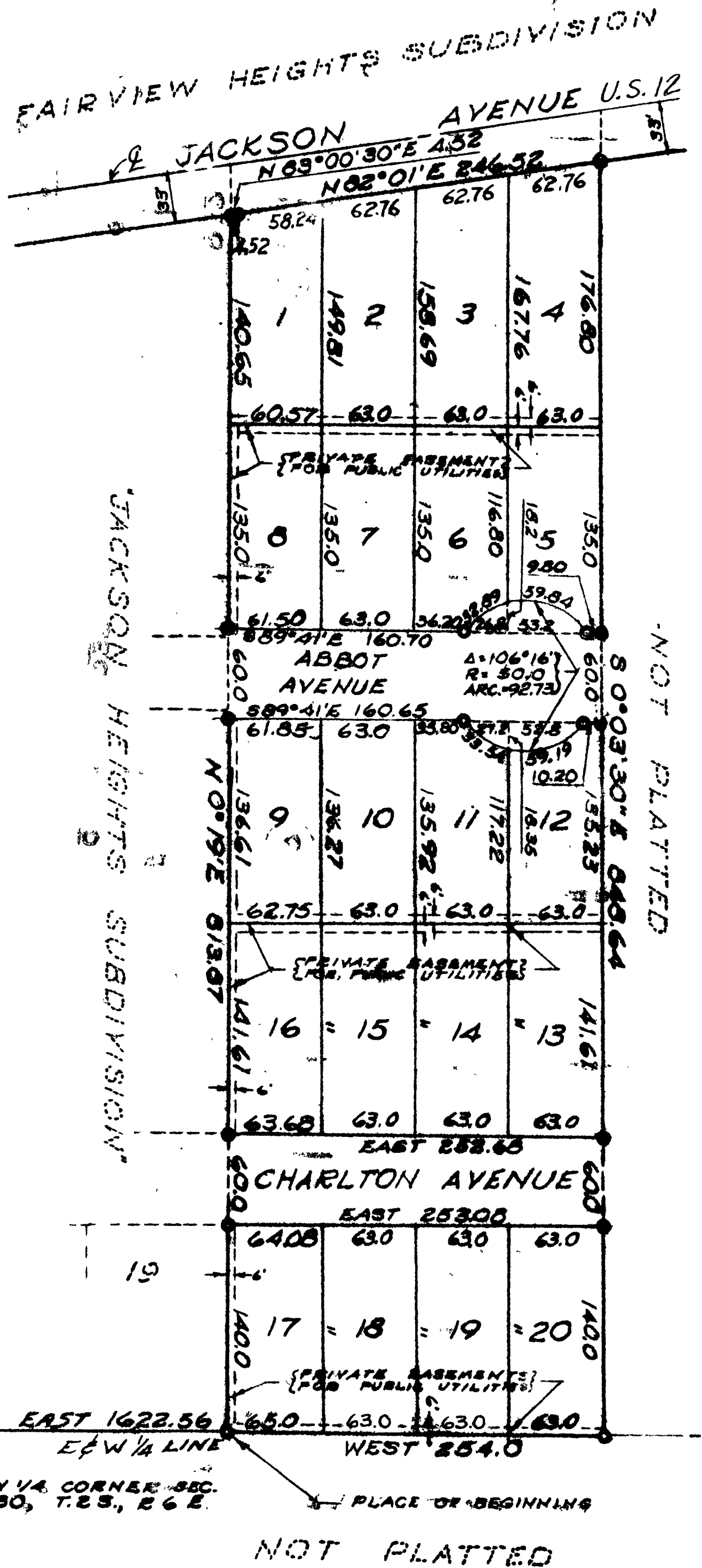
Office of County Treasurer, Washtenaw County  
I hereby certify, that there are no tax liens or titles held by the State on the lands described hereon, and that there are no tax liens or titles held by individuals on said lands, for the five years preceding the 22nd day of May, 1956, and that the taxes for said period of five years are all paid, as shown by the records of this office.  
This certificate does not apply to taxes, if any, now in process of collection by township, city or village collecting officers.

W. F. Verner (County Treasurer)

### ATTORNEY'S OPINION

I hereby certify from an examination of Abstract of title to the lands described in this plat that I find no outstanding interest, including mineral rights, other than in the parties joining in the dedication.

Date 4/3/56 James O. Kelly (Attorney)



### ACKNOWLEDGMENT

OF MICHIGAN, ss. Washtenaw County, ss. April 19, 1956, before me, a Public in and for said County, personally came the named Harold J. Zahn, Luella R. Zahn, Kurt Lange and Irma K. Zahn known to me to be the persons who made the above dedication, and acknowledged the same as their free act and deed.

Dean W. Zahn  
Notary Public, Washtenaw County  
My Commission expires 5-31-58

### DESCRIPTION OF LAND PLATTED

The land embraced in the annexed plat of ZAHN SUBDIVISION of the N.W. 1/4 Sec. 30 T 2 S, R 6 E, City of Ann Arbor, Washtenaw County, Michigan is described as follows:

Beginning at a point in the E & W 1/2 line 1622.56 feet east of the east 1/2 corner of Section 30, T 2 S, R 6 E, City of Ann Arbor, Washtenaw County, Michigan; thence N 0°-19' E 1622.56 feet; thence along the southerly line of Jackson Avenue N 82°-01' E 246.52 feet; thence S 82°-01' E 846.64 feet; thence along the E & W 1/2 line 1622.56 feet to the place of beginning, containing 20 lots numbered 1 through 20 inclusive.

### SURVEYOR'S CERTIFICATE

I hereby certify that the plat hereon delineated is a correct and true copy of the original plat as shown on the original plat and that the permanent metal monuments consisting of bars of not less than one-half inch in diameter and 36 inches in length, and the iron corner bars of not less than one-half inch in diameter and 36 inches in length, are placed over each other at least 6 inches with an over-all depth of not less than 36 inches, encased in a concrete base of not less than 4 inches in diameter and 36 inches in depth, and are placed at points marked thus (O) as thereon shown, and that the lines in the boundaries of the land platted, at all the corners and at the intersections of lines of streets, and at the intersections of lines of streets with the boundaries of the plat as shown on the original plat, are true and correct.

Robert J. Jagow  
Registered Land Surveyor #6998

### CERTIFICATE OF APPROVAL BY THE CITY PLANNING COMMISSION

This plat was approved by the PLANNING COMMISSION of the City of Ann Arbor, Michigan, at a meeting held on the 24th day of APRIL, 1956.

John E. Swisher, Jr. (Chairman)  
Leo P. Meyers (Secretary)

### CITY CLERK'S CERTIFICATE

Office of City Clerk, City of Ann Arbor  
I hereby certify, that the width and depth of lots shown on this plat are in compliance with rules and regulation of the City of Ann Arbor and the requirements as to width and depth of Sec. 30 of Act 172, Public Acts of 1929 as amended by Act 186 Public Acts of 1954.

Fred J. Looker (Clerk)

APPROVED  
Charles M. Hepler  
STATE HIGHWAY COMMISSIONER