

SURVEYOR'S CERTIFICATE

I hereby certify that the plat hereon delineated is a correct one and that permanent metal monuments of not less than one inch in diameter and fifteen inches in length set in a concrete base at least four inches in diameter and forty-eight inches in depth have been placed at points marked thus @, as thereon shown at all angles in the boundaries of the land platted, at all intersections of streets, intersections of alleys, or of streets and alleys, and at intersections of streets and alleys with the boundaries of the plat as shown in said plat.

H. H. Atwell Registered Civil Engineer.

DEDICATION

KNOW ALL MEN BY THESE PRESENTS, That we Charles E. Rehfuess a single man, and Jacob Rehfuess, a single man, as proprietors of Lots 18 to 25, 39 to 46, 54 to 57 inclusive, and part of lots 17, 26, 38, 47 and 58, have caused the land embraced in the annexed plat to be surveyed, laid out and platted, to be known as "ALLMAND HEIGHTS", in the City of Ann Arbor, part of section 30, Town 2 south, Range 6 east, Washtenaw County, Michigan, and that the streets and alleys shown on said plat are hereby dedicated to the use of the public.

Signed and sealed in Presence of:

Charles E. Rehfuess (LS) George E. Cornell (LS) Jacob F. Rehfuess (LS) Ida Dettling (LS)

State of Michigan ) ss County of Washtenaw )

On this ... day of ... MAY ... 1929, before me a Notary Public in and for said county, personally came the above named Charles E. Rehfuess, a single man and Jacob F. Rehfuess, a single man, known to me to be the persons who executed the above dedication, and acknowledged the same to be their free act and deed.

Ida Dettling Notary Public, Washtenaw County, Michigan.

My commission expires June 17, 1932

DEDICATION

KNOW ALL MEN BY THESE PRESENTS, That we the "REALTY ASSOCIATES INCORPORATED" a Michigan corporation by M. F. Bonisteel, President, and Stanley K. Loveland, Secretary, as proprietors of Lots 1 to 16, 27 to 37, 48 to 53, 59 to 72 inclusive, and part of lots 17, 26, 38, 47 and 58, and as holders of a land contract covering Lots 18 to 25, 39 to 46, 54 to 57 inclusive, and part of Lots 17, 26, 38, 47 and 58, have caused the land embraced in the annexed plat to be surveyed, laid out and platted to be known as "ALLMAND HEIGHTS", in the City of Ann Arbor, part of section 30, Town 2 south, Range 6 east, Washtenaw County, Michigan, and that the streets and alleys shown on said plat are hereby dedicated to the use of the public.

Signed and sealed in Presence of:

Realty Associates Incorporated M. F. Bonisteel (LS) R. O. Bonisteel (LS) Stanley K. Loveland (LS) Secretary Ida Dettling (LS)

State of Michigan ) ss County of Washtenaw )

On this ... day of ... MAY ... 1929, before me a Notary Public in and for said county, personally came the above named M. F. Bonisteel and Stanley K. Loveland to me personally known, who being each by me duly sworn, did say that they are the President and Secretary, respectively, of the "REALTY ASSOCIATES INCORPORATED" a Michigan corporation, and that the seal affixed to said instrument is the corporate seal of said corporation, and the said instrument was signed and sealed in behalf of said corporation by authority of its Board of Directors and the said M. F. Bonisteel and Stanley K. Loveland acknowledged said instrument to be the free act and deed of said corporation.

Ida Dettling Notary Public, Washtenaw County, Michigan.

My commission expires June 17, 1930

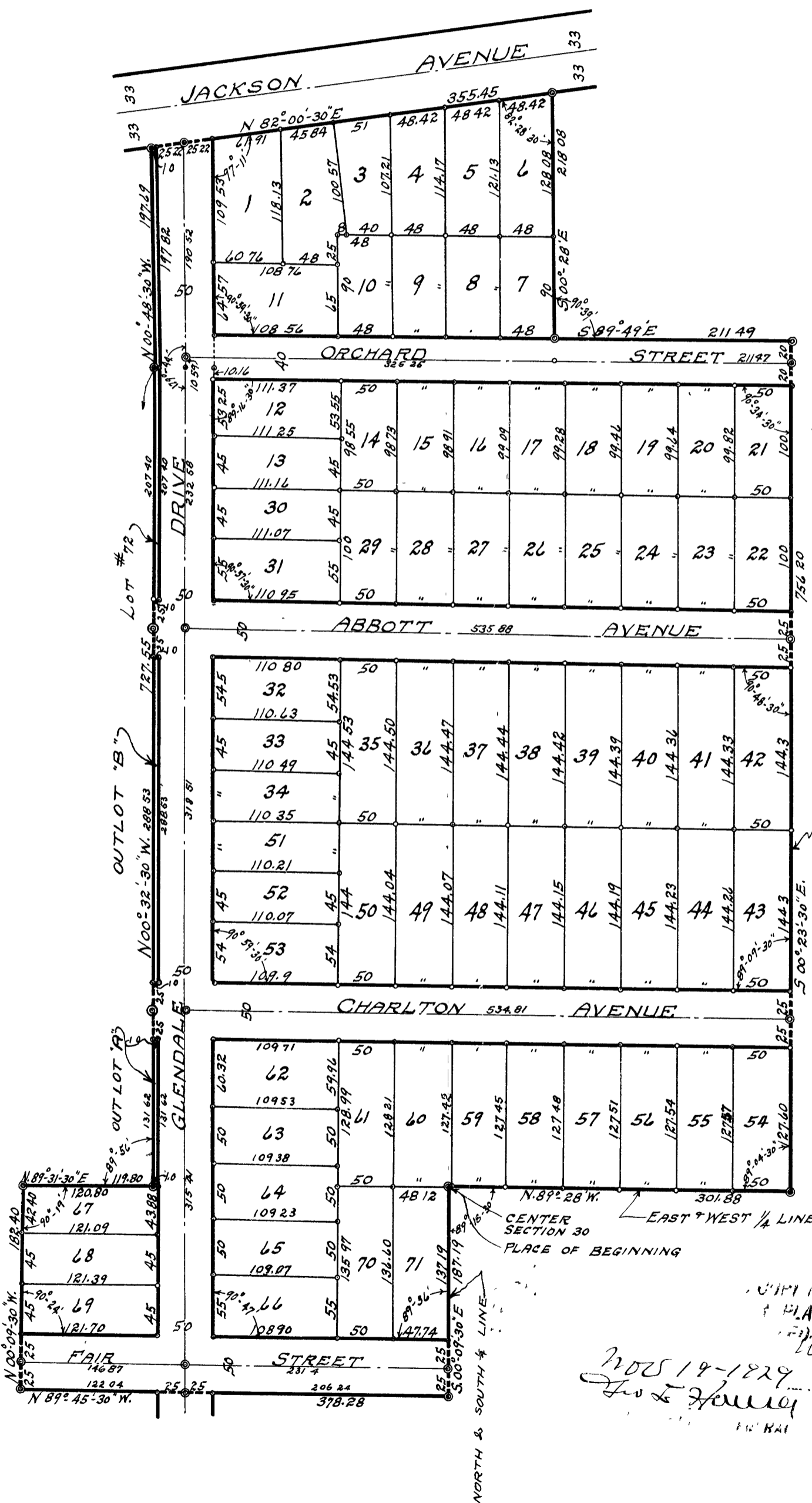
"ALLMAND HEIGHTS"

IN THE CITY OF ANN ARBOR PART OF SECTION 30, TOWN 2 SOUTH RANGE 6 EAST, WASHTENAW COUNTY, MICHIGAN.

SCALE: 1 INCH = 100 FEET.



Note: All dimensions are given in feet and decimals thereof.



DESCRIPTION

Commencing at the center of section thirty; thence south 00 degrees, 9 minutes and 30 seconds east 187.19 feet; thence north 89 degrees, 45 minutes and 30 seconds west 378.28 feet; thence north 00 degrees, 9 minutes and 30 seconds west 182.40 feet; thence north 89 degrees, 31 minutes and 30 seconds east 119.80 feet; thence north 00 degrees, 32 minutes and 30 seconds west 727.55 feet; thence north 00 degrees, 48 minutes and 30 seconds west 197.69 feet; thence north 82 degrees, 00 minutes and 30 seconds east 355.45 feet; thence south 00 degrees and 28 minutes east 218.08 feet; thence south 89 degrees and 49 minutes east 211.49 feet; thence south 00 degrees, 23 minutes and 30 seconds east 756.20 feet; thence north 89 degrees and 28 minutes west 301.88 feet to the place of beginning.

DEDICATION

KNOW ALL MEN BY THESE PRESENTS, That we, the State Savings Bank, a Michigan Corporation by John Walz, President, and H. F. Gross, Cashier, as mortgagees covering Lots 1 to 16, 27 to 37, 48 to 53, 59 to 72 inclusive, and part of lots 17, 26, 38, 47 and 58, have caused the land embraced in the annexed plat to be surveyed, laid out and platted, to be known as "ALLMAND HEIGHTS", in the City of Ann Arbor, part of section 30, Town 2 south, Range 6 east, Washtenaw County, Michigan, and that the streets and alleys shown in said plat are hereby dedicated to the use of the public.

Signed and sealed in Presence of:

John Walz (LS) Clara L. Graf (LS) H. F. Gross (LS) Cecille M. Whipple (LS)

State of Michigan ) ss County of Washtenaw )

On this ... day of ... May ... 1929, before me, a Notary Public in and for said County, personally came the above named John Walz and H. F. Gross, to me personally known, who being each by me duly sworn, did say that they are the President and Cashier respectively, of the State Savings Bank, a Michigan corporation, and that the seal affixed to said instrument is the corporate seal of said corporation, and the said instrument was signed and sealed in behalf of said corporation by authority of its Board of Directors, and the said John Walz and H. F. Gross acknowledged said instrument to be the free act and deed of said corporation.

Clara L. Graf Notary Public, Washtenaw County, Michigan.

My commission expires July 19, 1931

TAX CERTIFICATE OFFICE OF THE COUNTY TREASURER, WASHTENAW COUNTY, MICHIGAN

I hereby certify, That there are ... tax liens or titles held by the State on the lands described below, and that there are ... tax liens or titles held by individuals on said lands, for the five years preceeding the ... day of ... May ... 1929 and that the taxes for said period of five years are fully paid, as shown by the records of this office.

Frank H. Ticknor County Treasurer

CERTIFICATE OF APPROVAL BY THE BOARD OF PUBLIC WORKS

This plat was approved by the Board of Public Works of the City of Ann Arbor, Washtenaw County, Michigan, at a meeting held ... May 6, 1929

Fred C. Perry Clerk

CERTIFICATE OF APPROVAL BY THE COMMON COUNCIL

This plat was approved by the Common Council of the City of Ann Arbor, Washtenaw County, Michigan, at a meeting held ... July 1, 1929

Fred C. Perry Clerk

CERTIFICATE OF APPROVAL BY THE BOARD OF COUNTY AUDITORS

This plat was approved by the Board of County Auditors of Washtenaw County, Michigan the ... day of ... October ... 1929

L. O. Cushing Chairman W. M. Fowler Elmer L. Brown

Handwritten notes and signatures: NOV 19-1929, John S. Cunningham, NOV 28-1929, John S. Cunningham