

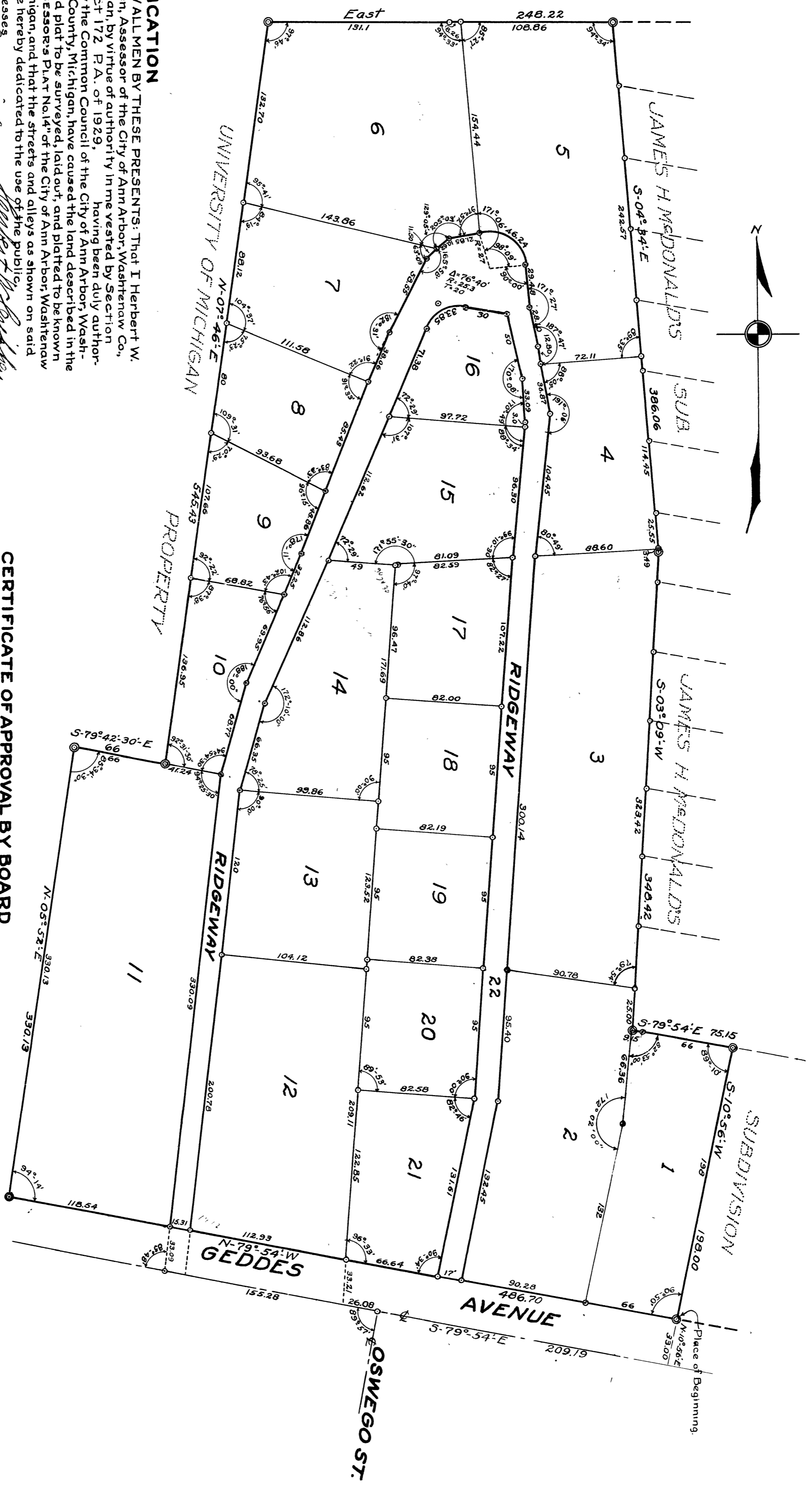
Washburn
 Assessor Plat No. 14
 June 31 4"
 53
 John A. Cunningham

June 1-1931
 John B. Howard

ASSESSOR'S PLAT No. 14
IN THE CITY OF ANN ARBOR,
WASHTENAW CO., MICHIGAN.

SCALE
 1 INCH = 60 FT.

June 1-1931
 John B. Howard



DEDICATION

KNOW ALL MEN BY THESE PRESENTS: That I Herbert W. Crippen, Assessor of the City of Ann Arbor, Washtenaw Co., Michigan, by virtue of authority in me vested by Section 51, Act 172 P. A. of 1929, having been duly authorized by the Common Council of the City of Ann Arbor, Washtenaw County, Michigan, have caused the land described in the annexed plat to be surveyed, laid out, and platted to be known as "Assessor's Plat No. 14" of the City of Ann Arbor, Washtenaw Co., Michigan, and that the streets and alleys as shown on said plat are hereby dedicated to the use of the public.

ACKNOWLEDGMENT

On this 14th day of May A.D. 1931 before me, a Notary Public in and for said County, personally came the above named Herbert W. Crippen, Assessor of the City of Ann Arbor, Washtenaw County, Michigan, known to me to be the person who executed the above dedication, and acknowledged the same to be his free act and deed as such Assessor.

Notary Public in and for Washtenaw Co., Michigan.
 My Commission expires My Commission Expires April 29, 1931

CERTIFICATE OF APPROVAL BY BOARD OF COUNTY AUDITORS.

Approved by the Board of County Auditors of Washtenaw County, Michigan this 5th day of May 1931.

DESCRIPTION

The land embraced in the annexed plat of "Assessor's Plat No. 14" a part of the SE 1/4 of Section 26, T.25, R.6, E., Washtenaw County, Michigan in the City of Ann Arbor is described as follows: Commencing at the intersection of the Center Lines of Geddes Ave. and Oswego Street in the City of Ann Arbor, Washtenaw Co., Michigan, thence S 79° 54' E, 209.19 feet to an iron pipe for a Place of Beginning, thence N 10° 56' E, 33 feet to an iron pipe for a Place of Beginning, thence N 79° 54' W, 486.70 feet, thence N 03° 52' E, 330.13 feet, thence S 79° 42' 30" E, 66 feet, thence N 07° 46' E, 545.43 feet, thence Due East, 248.22 feet, thence S 04° 34' E, 366.06 feet, thence S 03° 09' W, 348.42 feet, thence S 79° 54' E, 7515 feet, thence S 10° 56' W, 198.00 feet to Place of Beginning.

SURVEYOR'S CERTIFICATE

I hereby certify that the plat hereon delineated is a correct one and that permanent metal monuments of not less than one inch in diameter and fifteen inches in length set in a concrete base at least four inches in diameter and forty eight inches in length have been placed at points marked thus: (X) as hereon shown at all angles in the boundaries of the land platted, at all the intersections of streets, intersections of streets and alleys, or of alleys, and at the intersections of streets and alleys with the boundaries of the plat as shown on said plat.

CERTIFICATE OF MUNICIPAL APPROVAL

This plat was approved by the Board of Public Works of the City of Ann Arbor, Washtenaw County, Michigan at a meeting held May 12, 1931.