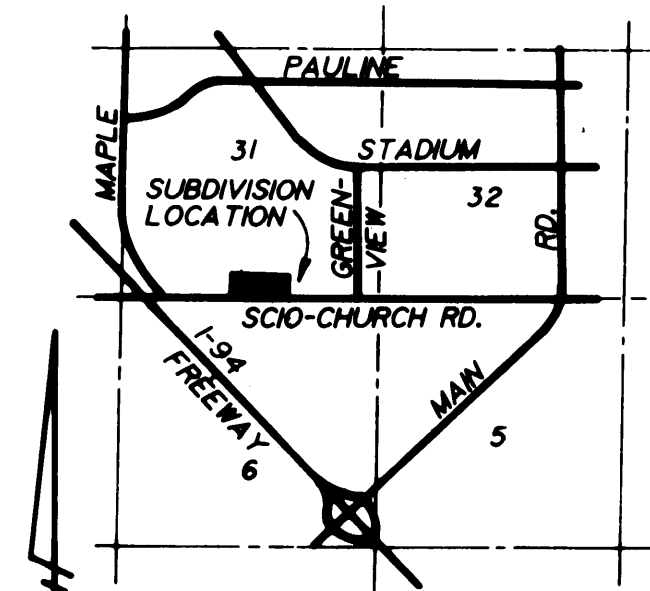
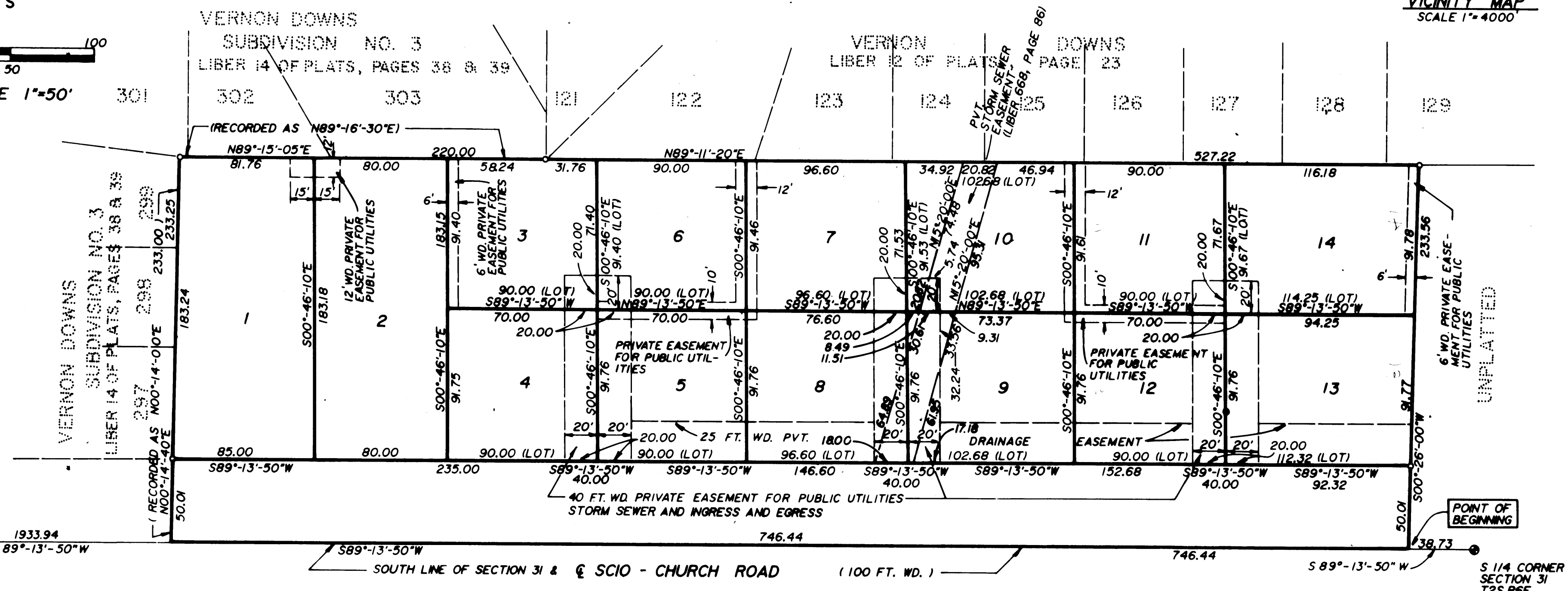
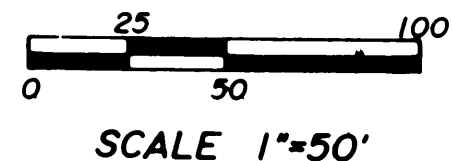
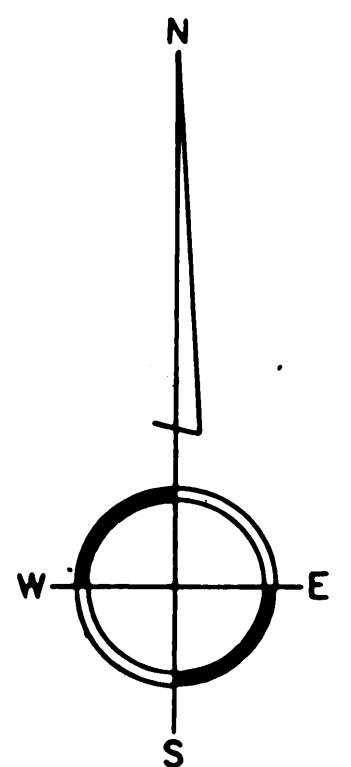


LANDMARK MAPLE SUBDIVISION

A PART OF THE SW 1/4 OF SECTION 31, T2S, R6E
CITY OF ANN ARBOR WASHTENAW COUNTY, MICHIGAN



POSTED 10/11/1988
LANDMARK MAPLE SUBDIVISION
LIBER 12, PAGE 23
PLAT 66-86



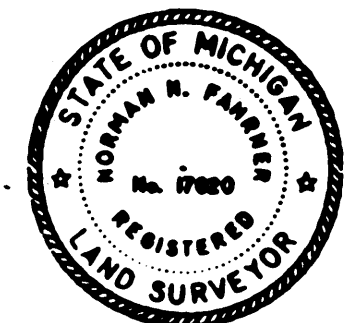
1933.94
S 89°-13'-50"W
SW CORNER SECTION 31 T2S,R6E

POINT OF BEGINNING
S 1/4 CORNER SECTION 31 T2S,R6E

52 53 CHURCHILL LIBER 19 OF PLATS, 60 61 DOWNS SUBDIVISION PAGES 82, 83, 84 & 85 62 CHURCHILL DRIVE (66 FT. WD.) 63 64 65 66 67 68 69 70 71 72 73 74 75 76 77 78 79 80 81 82 83 84 85 86 87 88 89 90 91 92 93 94 95 96 97 98 99 100

- LEGEND**
- 1. ALL DIMENSIONS ARE IN FEET
 - 2. 1/2" X 3/8" IRON BARS ENCASED IN 4" DIAMETER CONCRETE MONUMENTS HAVE BEEN PLACED AT CORNERS MARKED °
 - 3. LOT CORNERS HAVE BEEN MARKED WITH 1/2" X 22" IRON PIPE
 - 4. BEARINGS WERE ESTABLISHED FROM PLAT OF VERNON DOWNS, RECORDED IN LIBER 12 OF PLATS, PAGE 23, WASH. CO. RECORDS.

NOTE
LOTS 1 AND 2 WILL HAVE RIGHTS OF INGRESS AND EGRESS DIRECTLY FROM SCIO-CHURCH ROAD. LOTS 3 THROUGH 14 INCLUSIVE WILL HAVE THE RIGHTS OF INGRESS AND EGRESS FROM SCIO-CHURCH ROAD ONLY ACROSS PRIVATE EASEMENTS FOR INGRESS AND EGRESS AS SHOWN ON THE PLAT



Norman N. Fahrner
NORMAN N. FAHRNER

CERTIFIED TRUE COPY OF RECORDED PLAT BY DEPARTMENT OF COMMERCE
By *Richard E. Lomax*
Richard E. Lomax, L.S.
Manager Plat Section
Date *June 16, 1988*

PREPARED AND DRAFTED BY
WASHTENAW ENGINEERING COMPANY, INC.
3250 W. LIBERTY ROAD
ANN ARBOR, MICHIGAN 48106
3-F-651-1
SHEET 1 OF 3

LANDMARK MAPLE SUBDIVISION

A PART OF THE SW 1/4 OF SECTION 31, T2S, R6E
CITY OF ANN ARBOR WASHTENAW COUNTY, MICHIGAN

SURVEYOR'S CERTIFICATE

I, Norman N. Fahrner, Surveyor, certify: That I have surveyed, divided and mapped the land shown on this Plat, described as follows: LANDMARK MAPLE SUBDIVISION a part of the SW 1/4 of Section 31, T2S, R6E, City of Ann Arbor, Washtenaw County, Michigan.

Commencing at the South 1/4 corner of Section 31, T2S, R6E, City of Ann Arbor, Washtenaw County, Michigan; thence S89°13'50"W 38.73 feet along the South line of said Section and the centerline of Scio Church Road to the POINT OF BEGINNING; thence continuing S89°13'50"W 746.44 feet along said South line and said centerline to the Southeast corner of "VERNON DOWNS SUBDIVISION NO.3" as recorded in Liber 14 of Plats, Pages 38 and 39, Washtenaw County Records; thence N00°14'40"E 233.25 feet along the East line of said subdivision; thence N89°15'05"E 220.00 feet along the South line of Lots 301, 302 and 303 of said subdivision to the Southwest corner of "VERNON DOWNS" as recorded in Liber 12 of Plats, Page 23, Washtenaw County Records; thence N89°11'20"E 527.22 feet along the South line of Lots 122 through 129 inclusive of said subdivision; thence S00°26'00"W 233.56 feet to the Point of Beginning.

Containing 14 Lots, numbered 1 through 14 inclusive and containing 4.00 acres of land, more or less.

That I have made such a survey, land-division and plat by the direction of the owners of such land.

That such plat is a correct representation of all exterior boundaries of the land surveyed and the subdivision of it.

That the required monuments and lot markers have been located in the ground or that surety has been deposited with the municipality as required by Section 125 of the Act.

The accuracy of survey is within the limits required by Section 126 of the Act.

That the bearings shown on the plat are expressed as required by Section 126 (3) of the Act and as explained in the legend.

Date July 21, 1987

Washtenaw Engineering Company
3250 West Liberty Road
P.O. Box 1204
Ann Arbor, Michigan 48106

Norman N. Fahrner

Norman N. Fahrner
Vice-President
Registered Land Surveyor
Michigan No. 17620



COUNTY TREASURER'S CERTIFICATE

The records in my office show no unpaid taxes or special assessments for the five years preceding Aug. 11, 87 involving the land included in this plat.

Michael A. Stimpson

Michael A. Stimpson,
County Treasurer
Washtenaw County, Michigan

PROPRIETOR'S CERTIFICATE

We as proprietors certify that we caused the land embraced in this plat to be surveyed, divided, mapped and dedicated as represented on this plat and that Scio-Church Road is for the use of the public; that the public utility easements are private easements and that all other easements are for the uses shown on the plat; Lots 1 and 2 will have the rights of ingress and egress directly from Scio-Church Road and Lots 3 through 14 inclusive will have the rights of ingress and egress from Scio-Church Road only across private easements for ingress and egress as shown on the Plat.

WITNESSES:

Phyllis Kaminski
Phyllis Kaminski

J.B. Grammatico
J.B. Grammatico
2580 West Ellsworth Road
Ann Arbor, Michigan 48103

Don Grammatico
Don Grammatico

Lynn Grammatico
Lynn Grammatico
2580 West Ellsworth Road
Ann Arbor, Michigan 48103

ACKNOWLEDGMENT

State of Michigan)
Washtenaw County) ss

Personally came before me this 7th day of August, 1987 the abovenamed J.B. Grammatico and Lynn Grammatico his wife, to me known to be the persons who executed the foregoing instrument and acknowledged that they executed the same as their free act and deed.

Kay Elaine Armbruster
Kay Elaine Armbruster Notary Public
Washtenaw County, Michigan

My Commission expires JANUARY 21, 1990

PROPRIETOR'S CERTIFICATE

We as proprietors certify that we caused the land embraced in this plat to be surveyed, divided, mapped and dedicated as represented on this plat and that Scio-Church Road is for the use of the public; that the public utility easements are private easements and that all other easements are for the uses shown on the plat; Lots 1 and 2 will have the rights of ingress and egress directly from Scio-Church Road and that Lots 3 through 14 inclusive will have the rights of ingress and egress from Scio-Church Road only across private easements for ingress and egress as shown on the Plat.

WITNESSES:

Kay E. Armbruster
Kay E. Armbruster

P.F. Conlin
P.F. Conlin
800 East Stadium Boulevard
Ann Arbor, Michigan 48104

Mary Barnwell-Chandonnet
Mary Barnwell-Chandonnet

Peggy D. Conlin
Peggy D. Conlin
800 East Stadium Boulevard
Ann Arbor, Michigan 48104

ACKNOWLEDGMENT

State of Michigan)
Washtenaw County) ss

Personally came before me this 7th day of August, 1987 the abovenamed P.F. Conlin and Peggy D. Conlin, his wife, to me known to be the persons who executed the foregoing instrument and acknowledged that they executed the same as their free act and deed.

Kay Elaine Armbruster
Kay Elaine Armbruster Notary Public
Washtenaw County, Michigan

My Commission expires JANUARY 21, 1990

COUNTY DRAIN COMMISSIONERS CERTIFICATE

Approved on Nov 3, 1987 as complying with Section 192 of Act 288, P.A. 1967 and the applicable rules and regulations published by my office in the County of Washtenaw.

Jack E. Durbin
Jack E. Durbin
Deputy Drain Commissioner

RECORDING CERTIFICATE

State of Michigan)
Washtenaw County) S.S.

This plat was received for record on the 24th day of March, 1988 at 10:41 A.M. and recorded in Liber 25 of Plats on Pages 16-18.

Robert Harrison
Robert Harrison, County Clerk/
Register of Deeds, Washtenaw County

3-F-651-2

SHEET 2 OF 3

20271002
LANDMARK MAPLE SUBDIVISION
LIBER 25 PAGE 16-18
03/24/1988
2 OF 3

LANDMARK MAPLE SUBDIVISION
A PART OF THE SW 1/4 OF SECTION 31, T2S, R6E
CITY OF ANN ARBOR WASHTENAW COUNTY, MICHIGAN

PROPRIETOR'S CERTIFICATE

I as proprietor certify that I caused the land embraced in this plat to be surveyed, divided, mapped and dedicated as represented on this plat and that Scio-Church Road is for the use of the public; that the public utility easements are private easements and that all other easements are for the uses shown on the plat; Lots 1 and 2 will have the rights of ingress and egress directly from Scio-Church Road and Lots 3 through 14 inclusive will have the rights of ingress and egress from Scio-Church Road only across private easements for ingress and egress as shown on the Plat.

WITNESSES:

Kay E. Armbruster
Kay E. Armbruster
Eugene F. Hanlon
Eugene F. Hanlon
109 East Ann Street
Ann Arbor, Michigan 48103
Mary Barnwell-Chandonnet
Mary Barnwell-Chandonnet

ACKNOWLEDGMENT

State of Michigan)
) ss
Washtenaw County)

Personally came before me this 7th day of August, 1987 the abovenamed Eugene F. Hanlon, a single man, to me known to be the person who executed the foregoing instrument and acknowledged that he executed the same as his free act and deed.

Kay Elaine Armbruster
Kay Elaine Armbruster Notary Public
Washtenaw County, Michigan

My Commission expires JANUARY 21, 1990

PROPRIETOR'S CERTIFICATE

We as proprietors certify that we caused the land embraced in this plat to be surveyed, divided, mapped and dedicated as represented on this plat and that Scio-Church Road is for the use of the public; that the public utility easements are private easements and that all other easements are for the uses shown on the plat; Lots 1 and 2 will have the rights of ingress and egress directly from Scio-Church Road and Lots 3 through 14 inclusive will have the rights of ingress and egress from Scio-Church Road only across private easements for ingress and egress as shown on the Plat.

WITNESSES:

Kay E. Armbruster
Kay E. Armbruster
Peter Bilakos
Peter Bilakos
109 East Ann Street
Ann Arbor, Michigan 48103
Susan Bilakos
Susan Bilakos
109 East Ann Street
Ann Arbor, Michigan 48103
Mary Barnwell-Chandonnet
Mary Barnwell-Chandonnet

ACKNOWLEDGMENT

State of Michigan)
) ss
Washtenaw County)

Personally came before me this 7th day of August, 1987 the abovenamed Peter Bilakos and Susan Bilakos, his wife, to me known to be the persons who executed the foregoing instrument and acknowledged that they executed the same as his free act and deed.

Kay Elaine Armbruster
Kay Elaine Armbruster Notary Public
Washtenaw County, Michigan

My Commission expires JANUARY 21, 1990

CERTIFICATE OF MUNICIPAL APPROVAL

I hereby certify that this plat was approved by the City Council of the City of Ann Arbor, at a meeting held December 21, 1987 and was reviewed and found to be in compliance with Act 288, P.A. of 1967 and that proper surety has been posted with the City of Ann Arbor to insure the construction of the public sewers and public water system prior to sale of any lots and the City does have proper adopted zoning and subdivision control ordinance with reference to Section 148 (4) and 186 of P.A. 288, and the city waives the minimum lot size requirements. Proper surety has been posted with City of Ann Arbor to insure the placement of monuments and lot corners prior to December 21, 1988.

W. Northcross
W. Northcross, Clerk, City of
Ann Arbor

COUNTY PLAT BOARD CERTIFICATE

This plat has been reviewed and is approved by the Washtenaw County Plat Board on February 4th 1988 as being in compliance with all of the provisions of Act 288, P.A. 1967, and the Plat Board's applicable rules and regulations.

Dillard Roy Craiger
Dillard Roy Craiger, Chair,
Plat Board, Washtenaw County
Board of Commissioners

Robert M. Harrison
Robert M. Harrison, County
Clerk/Register of Deeds

Michael A. Stimpson
Michael A. Stimpson,
County Treasurer



Norman R. Fahrner
Norman R. Fahrner