

WESTAIRE TERRACE

A SUBDIVISION OF PART OF THE WEST 1/2 SEC 19, T 2 S, R 6 E, CITY OF ANN ARBOR, WASHTENAW COUNTY, MICHIGAN

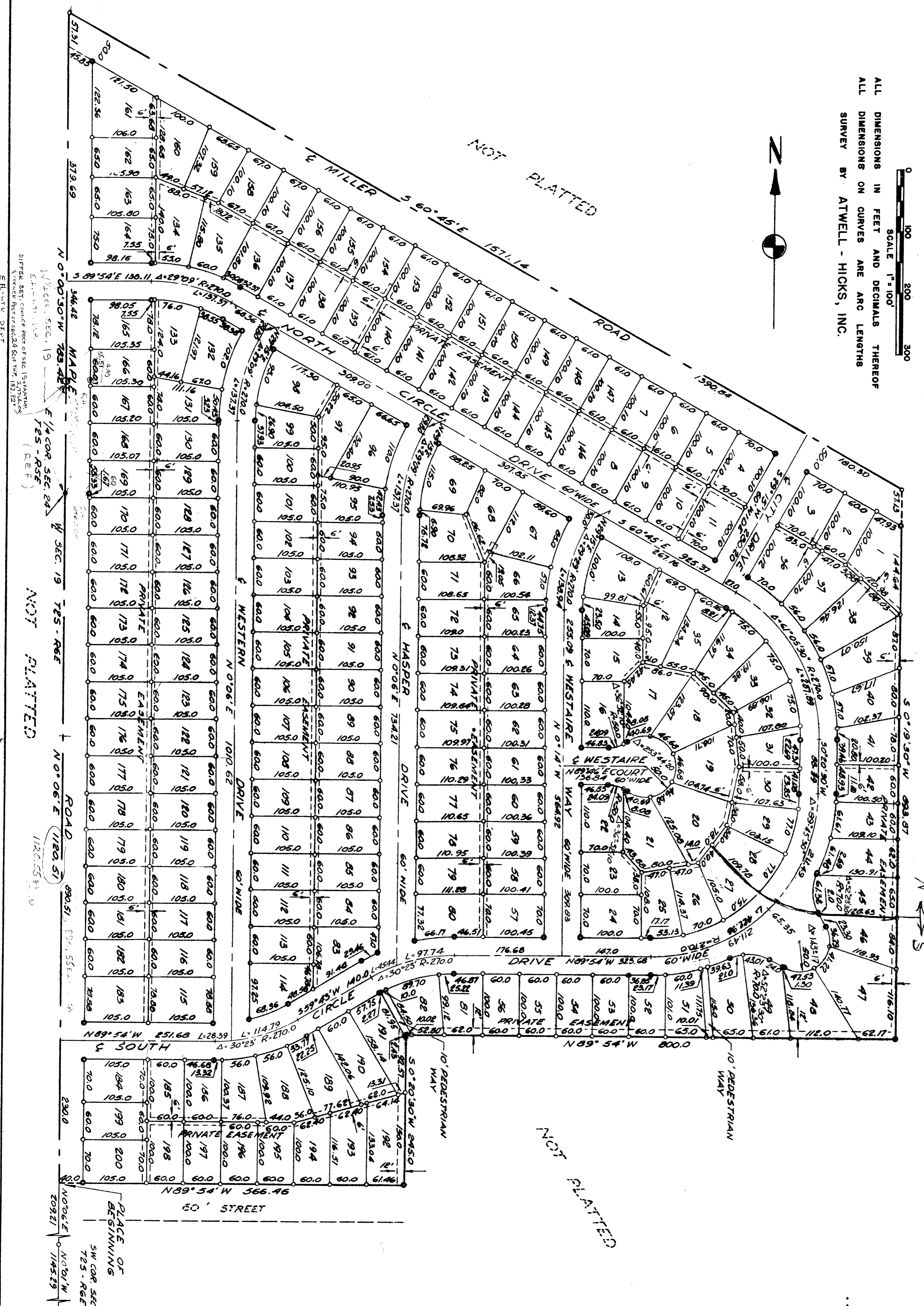
ALL DIMENSIONS IN FEET AND DECIMALS THEREOF
ALL DIMENSIONS ON CURVES ARE ARC LENGTHS
SURVEY BY ATWELL-HICKS, INC.



NOT PLATTED

ARBOR HEIGHTS
SUBDIVISION No 2

SHEET 1 OF 2



SW COR SEC 19
725 - RGE
1120.5531
N 0° 06' E
1180.51
ROAD

NOT PLATTED

1120.5531

PLACE OF
BEGINNING
SW COR SEC 19
725 - RGE
N 0° 06' E
1145.29

WESTAIRE TERRACE

A SUBDIVISION OF PART OF THE WEST 1/2 SEC 19, T 2 S, R 6 E, CITY OF ANN ARBOR, WASHTENAW COUNTY, MICHIGAN



ALL DIMENSIONS IN FEET AND DECIMALS THEREOF
ALL DIMENSIONS ON CURVES ARE ARC LENGTHS
SURVEY BY ATWELL - HICKS, INC.

Register's Office
Washtenaw County, Mich.
Plat of Westaire Terrace
City of Ann Arbor (Local)
was Recorded this 31st day of
May A.D. 1955 at 2 o'clock
P.M. in Liber 12 of Plats
on Page 51-5

I hereby certify this copy is a true copy of map as
plattorwarded the Register of Deeds for recording.
Date May 26, 1955
Filed in Auditor General's Dept.
Date June 15, 1955
Examined and approved
Date May 26, 1955

Viola Jorgensen
Auditor General
By *D.F. McKeown*
Plat Engineer

DEDICATION

KNOW ALL MEN BY THESE PRESENTS, that we Neil O. Staebler, doing business under the assumed name of Staebler and Son, Burnette Staebler, his wife, Rena O. Geyer, survivor of Harold H. Geyer, and HARRY LEE GEYER, A SINGLE MAN as proprietors, have caused the land embraced in the annexed plat to be surveyed, laid out and platted, to be known as WESTAIRE TERRACE a subdivision of part of the West 1/2 Sec 19, T 2 S R 6 E, City of Ann Arbor, Washtenaw County Michigan and that the roads, ways and drives as shown on said plat are hereby dedicated to the use of the public.

Signed and Sealed in the Presence of:

Hugh E. Wilson (L.S.)
HUGH E. WILSON (Witness)
Neil O. Staebler (L.S.)
Neil O. Staebler
Burnette Staebler (L.S.)
Burnette Staebler
Rena O. Geyer (L.S.)
Rena O. Geyer
Harry Lee Geyer (L.S.)
HARRY LEE GEYER

ACKNOWLEDGMENT

STATE OF MICHIGAN)
County of Washtenaw) SS

On this 26th day of March A.D. 1955 before me, a Notary Public in and for said County, personally came the above named Neil O. Staebler, Burnette Staebler, HARRY LEE GEYER, and Rena O. Geyer known to me to be the persons who executed the above dedication, and acknowledged the same to be their free act and deed.

Lucile E. Lauer
LUCILE E. LAUER
Notary Public in and for Washtenaw County
My Commission expires 1-13-57

DESCRIPTION OF LAND PLATTED

The land embraced in the annexed plat of WESTAIRE TERRACE a subdivision of part of the West 1/2 Sec 19, T 2 S, R 6 E, City of Ann Arbor, Washtenaw County, Michigan is described as follows:

COMMENCING at the SW corner of Section 19, T 2 S, R 6 E. City of Ann Arbor, Washtenaw County, Michigan; thence along the west line of said section N 0°-01' W 1145.29 feet; thence N 0°-06' E 209.21 feet for a PLACE OF BEGINNING; thence continuing N 0°-06' E 1120.51 feet; thence N 0°-00'-30" W 783.42 feet; thence S 60°-45' E 1571.14 feet; thence S 0°-19'-30" W 893.87 feet; thence N 89°-54' W 800.0 feet; thence S 0°-20'-30" W 245.0 feet; thence N 89°-54' W 566.46 feet to the place of beginning containing 200 lots numbered 1 to 200 inclusive.

SURVEYOR'S CERTIFICATE

I hereby certify that the plat hereon delineated is a correct one and that permanent metal monuments consisting of bars not less than one-half inch in diameter and 36 inches in length, or shorter bars of not less than one-half inch in diameter lapped over each other at least 6 inches with an over-all length of not less than 36 inches, encased in a concrete cylinder at least 4 inches in diameter and 36 inches in depth have been placed at points marked thus (⊙) as thereon shown at all angles in the boundaries of the land platted, at all the intersections of streets, intersections of alleys, or of streets and alleys, and at the intersections of streets and alleys with the boundaries of the plat as shown on said plat.

Herbert S. Hicks
Herbert S. Hicks
Registered Land Surveyor and
Professional Engineer # 1715

CERTIFICATE OF APPROVAL BY THE CITY PLANNING COMMISSION

This plat was approved by the Planning Commission of the City of Ann Arbor, Mich., at a meeting held on the 29 day of MARCH 1955

John E. Swisher, Jr.
John E. Swisher, Jr. (Chairman)
Sybil K. Bennett
Sybil K. Bennett (Secretary)

MUNICIPAL APPROVAL

This plat was approved by the Common Council of the City of Ann Arbor at a meeting held April 7, 1955

Fred J. Looker (Clerk)

MUNICIPAL APPROVAL

This plat was approved by the Board of Public Works of the City of Ann Arbor at a meeting held April 6, 1955

Fred J. Looker (Clerk)

CITY CLERK'S CERTIFICATE

Office of City Clerk, City of Ann Arbor
I hereby certify, that the width and depth of lots shown on this plat are in compliance with rules and regulation of the City of Ann Arbor and the requirements as to width and depth of Sec. 30 of Act 172, Public Acts of 1929 as amended by Act 186 Public Acts of 1954.

Fred J. Looker
Fred J. Looker (Clerk)

COUNTY TREASURER'S CERTIFICATE

Office of County Treasurer, Washtenaw County.
I hereby certify, that there are no tax liens or titles held by the State on the lands described hereon, and that there are no tax liens or titles held by individuals on said lands, for the five years preceding the 26th day of April 1955, and that the taxes for said period of five years are all paid, as shown by the records of this office. This certificate does not apply to taxes, if any, now in process of collection by township, city or village collecting officers.

W. F. Verner
W. F. Verner (County Treasurer)

APPROVAL BY COUNTY PLAT BOARD

This plat was approved on the 26th day of March 1955 by the Washtenaw County Plat Board.

Patricia Newkirk Hardy
Patricia Newkirk Hardy (County Register of Deeds)
J. Martin Rempp
J. Martin Rempp (Auditor)
Adolph F. Gross
Adolph F. Gross (Auditor)
Herbert G. Loeffler
Herbert G. Loeffler (Auditor)

APPROVAL BY BOARD OF COUNTY ROAD COMMISSIONERS

This plat has been examined and was approved on the 29th day of April 1955 by the Washtenaw County Board of Road Commissioners.

James C. Hendley
James C. Hendley (Chairman)
Raymond L. Koch
Raymond L. Koch (Member)
H. L. Frisinger (Member)