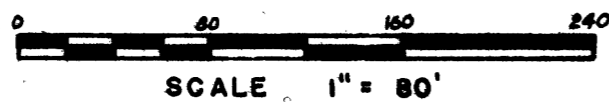


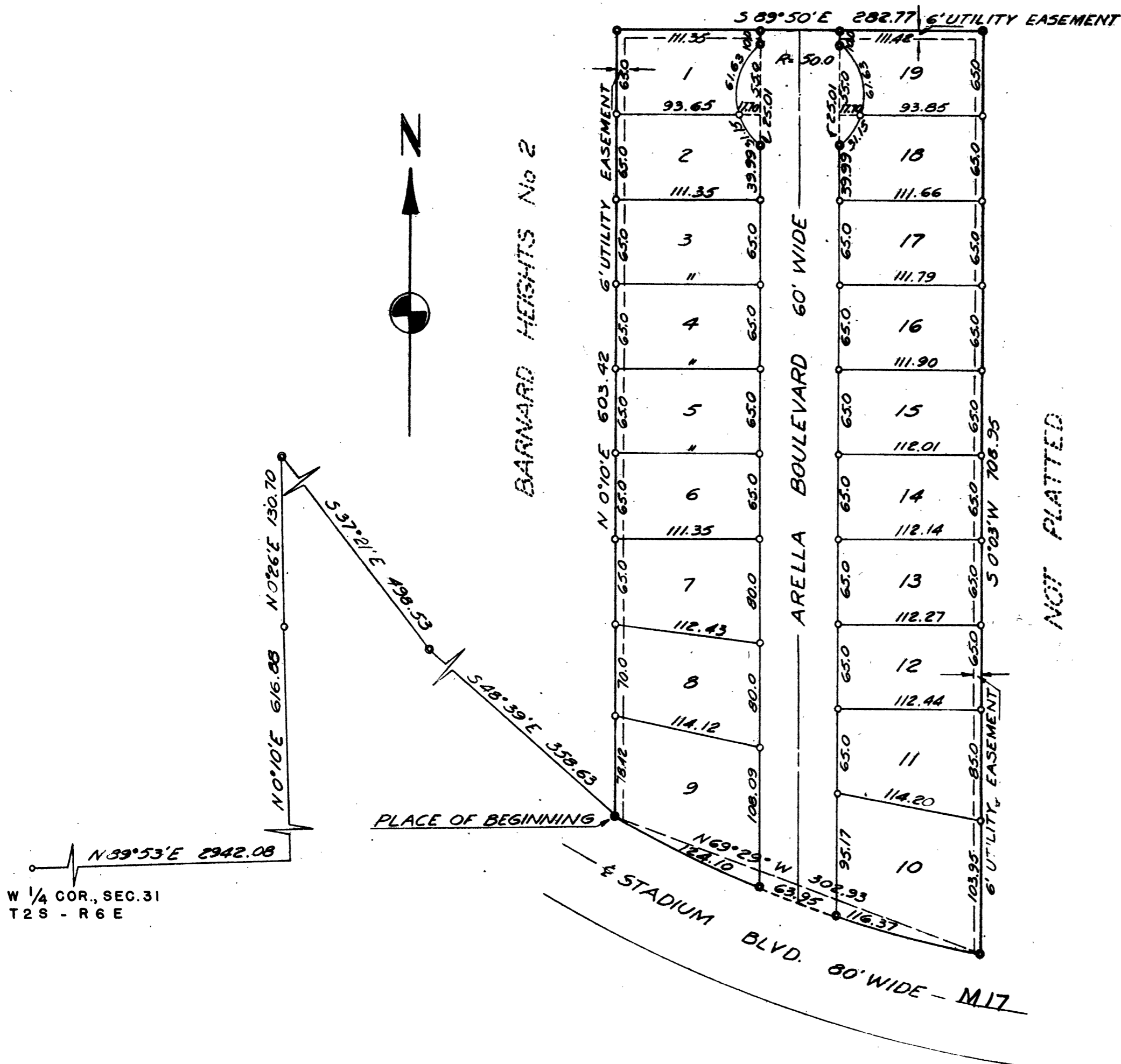
ROSS-STADIUM SUBDIVISION

A SUBDIVISION OF PART OF THE NE 1/4 OF SECTION 31 TOWN 2 SOUTH - RANGE 6 EAST IN THE CITY OF ANN ARBOR, WASHTENAW COUNTY, MICHIGAN



ALL DIMENSIONS ON CURVES ARE ARC LENGTHS
ALL DIMENSIONS IN FEET AND DECIMALS THEREOF

NOT PLATTED



W 1/4 COR., SEC. 31
T 2 S - R 6 E

SURVEYOR'S CERTIFICATE

I hereby certify that the plat hereon delineated is a correct one and that permanent metal monuments consisting of bars not less than one-half inch in diameter and 48 inches in length, or shorter bars of not less than one-half inch in diameter lapped over each other at least 6 inches with an over-all length of not less than 48 inches, encased in a concrete cylinder at least 4 inches in diameter and 48 inches in depth have been placed at points marked thus (O) as thereon shown at all angles in the boundaries of the land platted, at all the intersections of streets, intersections of alleys, or of streets and alleys, and at the intersections of streets and alleys with the boundaries of the plat as shown on said plat.

Herbert S. Hicks
Registered Land Surveyor or Registered Professional Engineer
Herbert S. Hicks No. 1715

CERTIFICATE OF APPROVAL BY THE CITY PLANNING COMMISSION

This plat was approved by the Planning Commission of the City of Ann Arbor, Michigan, at a meeting held on the 6th day of April, 1954.

John E. Swisher, Jr. (Chairman)
Sybil K. Bennett (Secretary)

MUNICIPAL APPROVAL

This plat was approved by the Board of Public Works of the City of Ann Arbor at a meeting held April 8, 1954.

Fred J. Looker (Clerk)

MUNICIPAL APPROVAL

This plat was approved by the Common Council of the City of Ann Arbor at a meeting held April 8, 1954.

Fred J. Looker (Clerk)

APPROVAL BY COUNTY PLAT BOARD

This plat was approved on the 15th day of April, 1954, by the Washtenaw County Plat Board.

Thomas A. FitzGerald (County Register of Deeds)
J. Martin Rempp Auditor
Adolph F. Gross Auditor
Herbert G. Loeffler Auditor

DEDICATION

KNOW ALL MEN BY THESE PRESENTS, that I, Mark Ross, as proprietor, have caused the land embraced in the annexed plat to be surveyed, laid out and platted, to be known as ROSS-STADIUM SUBDIVISION, a subdivision of part of the NE 1/4 of Section 31, Town 2, South, Range 6 East, City of Ann Arbor, Washtenaw County, Michigan and that the Boulevard as shown on said plat is hereby dedicated to the use of the public.

Signed and Sealed in the Presence of
Mark Ross (L.S.)
George O. Gardner (Witness)

DESCRIPTION OF LAND PLATTED

The land embraced in the annexed plat of ROSS-STADIUM SUBDIVISION, a subdivision of part of the NE 1/4 of Section 31, Town 2, South, Range 6 East, City of Ann Arbor, Washtenaw County, Michigan is described as follows: commencing at the West 1/4 corner of Section 31, Town 2 South, Range 6 East, Ann Arbor Township, Washtenaw County, Michigan; Thence North 89° 53' East 2942.08 feet; thence North 0° 10' East 616.88 feet; thence North 0° 26' East 130.70 feet; thence South 37° 21' East 498.53 feet; thence South 48° 39' East 358.63 feet for a PLACE OF BEGINNING; thence North 0° 10' East 603.42 feet; thence South 89° 50' East 282.77 feet; thence South 0° 03' West 708.95 feet; thence in the arc of a circular curve concave to the Northeast with a radius of 915.37 feet subtended by a chord which bears North 69° 29' West 302.93 feet to the place of beginning.

COUNTY TREASURER'S CERTIFICATE

Office of County Treasurer, Washtenaw County. I hereby certify, that there are no tax liens or titles held by the State on the lands described hereon, and that there are no tax liens or titles held by individuals on said lands, for the five years preceding the 15th day of April, 1954, and that the taxes for said period of five years are all paid, as shown by the records of this office. This certificate does not apply to taxes, if any, now in process of collection by township, city or village collecting officers.

W. F. Verneer (County Treasurer)

CERTIFICATE AS TO STATE TRUNK LINE OR FEDERAL AID ROADS

We hereby certify that said plat appears to include land located on a state trunk line or federal aid road.

WASHTENAW COUNTY PLAT BOARD
Thomas A. FitzGerald (County Register of Deeds)
J. Martin Rempp Auditor
Adolph F. Gross Auditor
Herbert G. Loeffler Auditor

ACKNOWLEDGMENT

STATE OF MICHIGAN } ss.
County of WASHTENAW }
On this 24th day of March, 1954, before me, a Notary Public in and for said County, personally came the above named Mark Ross known to me to be the person who executed the above dedication, and acknowledged the same to be his free act and deed.
Carey J. Tremmel
Notary Public, Washtenaw County
My Commission expires April 25, 1955.

COPY

Register's Office
Washtenaw County, Michigan
Plat of Ross Stadium Subdivision City of Ann Arbor
was Recorded this 11th day of June, A.D., 1954 at 9:15 o'clock A.M. in Liber 12 of Plate
on Page 17
Thomas A. FitzGerald (Register of Deeds)
C. M. Lewis, Dep.

I hereby certify that this copy is a true copy of the map or plat forwarded the Register of Deeds for recording.
Date June 10, 1954
Filed in Auditor General's Office
Date June 16, 1954
Examined and Approved
Date June 10, 1954

John B. Mastie
REGISTERED PROFESSIONAL ENGINEER
PLAT ENGINEER

APPROVED
Charles M. Ziegler
CHARLES M. ZIEGLER
STATE HIGHWAY COMMISSIONER