

ARMOOR PARK

A SUBDIVISION OF PART OF THE E 1/2 OF SECTION 31, T2S, R6E, CITY OF ANN ARBOR, WASHTENAW COUNTY, MICHIGAN



ALL DIMENSIONS IN FEET AND DECIMALS THEREOF
ALL DIMENSIONS ON CURVES ARE ARC LENGTHS
SURVEY BY ATWELL-HICKS, INC.

I hereby certify this plat is a correct copy of the original as shown to me on March 7, 1961...
March 7, 1961
March 13, 1961
March 7, 1961
Lynn T. Merritt
DIRECTOR, TAX DIVISION

COPY
Kashner
Armoor Park
was recorded this 9th
March 10, 1961 11:40
2nd 15 plates
44
Patricia Newkirk Hardy

DEDICATION

KNOW ALL MEN BY THESE PRESENTS, that we, R & K Building Co., a co-partnership composed of Simon S. Kaplan and Rose Kaplan, Irvin H. Steinberg and Lillian Steinberg his wife, co-partners, as proprietors, and Luella M. Weinmann and Ruth Weinmann, as mortgagees, have caused the land embraced in the annexed plat to be surveyed, laid out and platted to be known as ARDMOOR PARK, a Subdivision of part of the E 1/2 of Section 31, T2S, R6E, City of Ann Arbor, Washtenaw County, Michigan and that the Avenues and Boulevard as shown on said plat are hereby dedicated to the use of the public.

Signed in the Presence of:

David H. Weisberg Simon S. Kaplan
David H. Weisberg Witness Simon S. Kaplan
Esther A. Harlin Rose Kaplan
Esther A. Harlin Witness Rose Kaplan
Irvin H. Steinberg
Lillian Steinberg
Luella M. Weinmann
Ruth Weinmann
William M. Laird
William M. Laird Witness Luella M. Weinmann
Lorna L. Hoener Ruth Weinmann
Lorna L. Hoener Witness Ruth Weinmann

ACKNOWLEDGMENT

STATE OF MICHIGAN)
County of WAYNE) ss.

On this 10th day of NOVEMBER, A.D., 1960, before me, a Notary Public in and for said county, personally came the above named Simon S. Kaplan and Rose Kaplan, Irvin H. Steinberg and Lillian Steinberg to me personally known, who being each by me duly sworn did say that they are co-partners of R & K Building Co., a co-partnership, and that said instrument was signed in behalf of said co-partnership, and acknowledged said instrument to be the free act and deed of said co-partnership.

David H. Weisberg
David H. Weisberg
Notary Public, WAYNE County, Michigan
My Commission expires APRIL 4, 1961

ACKNOWLEDGMENT

STATE OF MICHIGAN)
County of Washtenaw) ss.

On this 10th day of November, A.D., 1960 before me, a Notary Public in and for said County, personally came the above named Luella M. Weinmann and Ruth Weinmann known to me to be the persons who executed the above dedication, and acknowledged the same to be their free act and deed.

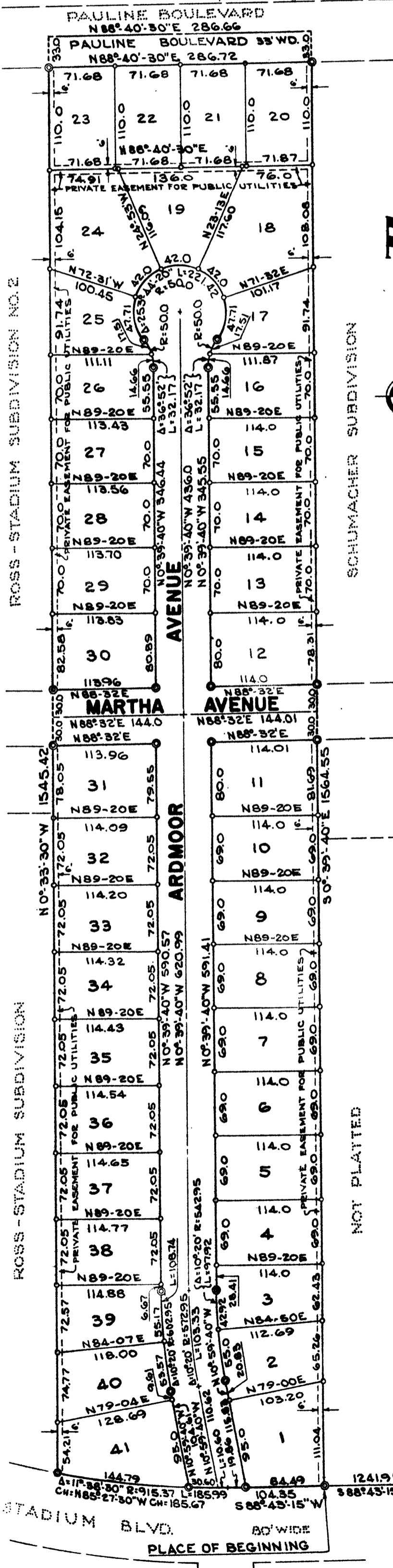
William M. Laird
William M. Laird
Notary Public, Washtenaw County, Michigan
My Commission expires March 1, 1963

CERTIFICATE OF APPROVAL BY THE CITY PLANNING COMMISSION

This plat was approved by the Planning Commission of the City of Ann Arbor, Michigan at a meeting held on the 10th day of January, 1961.

Richard A. Ware, Chairman
William J. Bott, Secretary

ARBORDALE SUBDIVISION NOT PLATTED



DESCRIPTION OF LAND PLATTED

The land embraced in the annexed plat of ARDMOOR PARK, a Subdivision of part of the E 1/2 of Section 31, T2S, R6E, City of Ann Arbor, Washtenaw County, Michigan is described as follows:

Commencing at the E 1/4 corner of Section 31, T2S, R6E, in the City of Ann Arbor, Washtenaw County, Michigan; thence N 0°-13'-30" W 1.75 feet along the east line of said section; thence S 88°-43'-15" W 1241.91 feet along the north line of Stadium Boulevard for a PLACE OF BEGINNING; thence continuing along said north line, S 88°-43'-15" W 104.35 feet; thence continuing along said north line 185.99 feet in the arc of a circular curve concave to the north, radius 915.37 feet, chord N 85°-27'-30" W 185.67 feet; thence N 0°-33'-30" W 1545.42 feet; thence along the center line of Pauline Boulevard, N 88°-40'-30" E 286.66 feet; thence S 0°-39'-40" E 1564.55 feet to the Place of Beginning, containing 41 Lots numbered 1 through 41 inclusive.

SURVEYOR'S CERTIFICATE

I hereby certify that the plat hereon delineated is a correct one and that permanent metal monuments consisting of bars not less than one-half inch in diameter and 36 inches in length, or shorter bars of not less than one-half inch in diameter lapped over each other at least 6 inches with an over-all length of not less than 36 inches, encased in a concrete cylinder at least 4 inches in diameter and 36 inches in depth have been placed at points marked thus (⊙) as thereon shown at all angles in the boundaries of the land platted, at all the intersections of streets, intersections of alleys, or of streets and alleys, and at the intersections of streets and alleys with the boundaries of the plat as shown on said plat.

Robert J. Jagow
Registered Land Surveyor # 6998

CERTIFICATE OF MUNICIPAL APPROVAL

This plat was approved by the Common Council of the City of Ann Arbor at a meeting held January 16, 1961, and that the width of lots is in compliance with requirements of Section 30, Act 172, of 1929, as amended.

Fred J. Looker, Clerk

COUNTY TREASURER'S CERTIFICATE Office of County Treasurer, Washtenaw County

I hereby certify, that there are no tax liens or titles held by the State on the lands described hereon, and that there are no tax liens or titles held by individuals on said lands for the five years preceding the 28th day of February, 1961, and that the taxes for said period of five years are all paid, as shown by the records of this office.

W. F. Verner, County Treasurer

APPROVAL BY COUNTY PLAT BOARD

This plat was approved on the 2nd day of March, 1961, by the Washtenaw County Plat Board.

Patricia Newkirk Hardy
John H. Flook
County Register of Deeds County Drain Commissioner
J. Martin Rempp
Herbert G. Loeffler
Auditor Auditor
John P. Cook
Auditor