

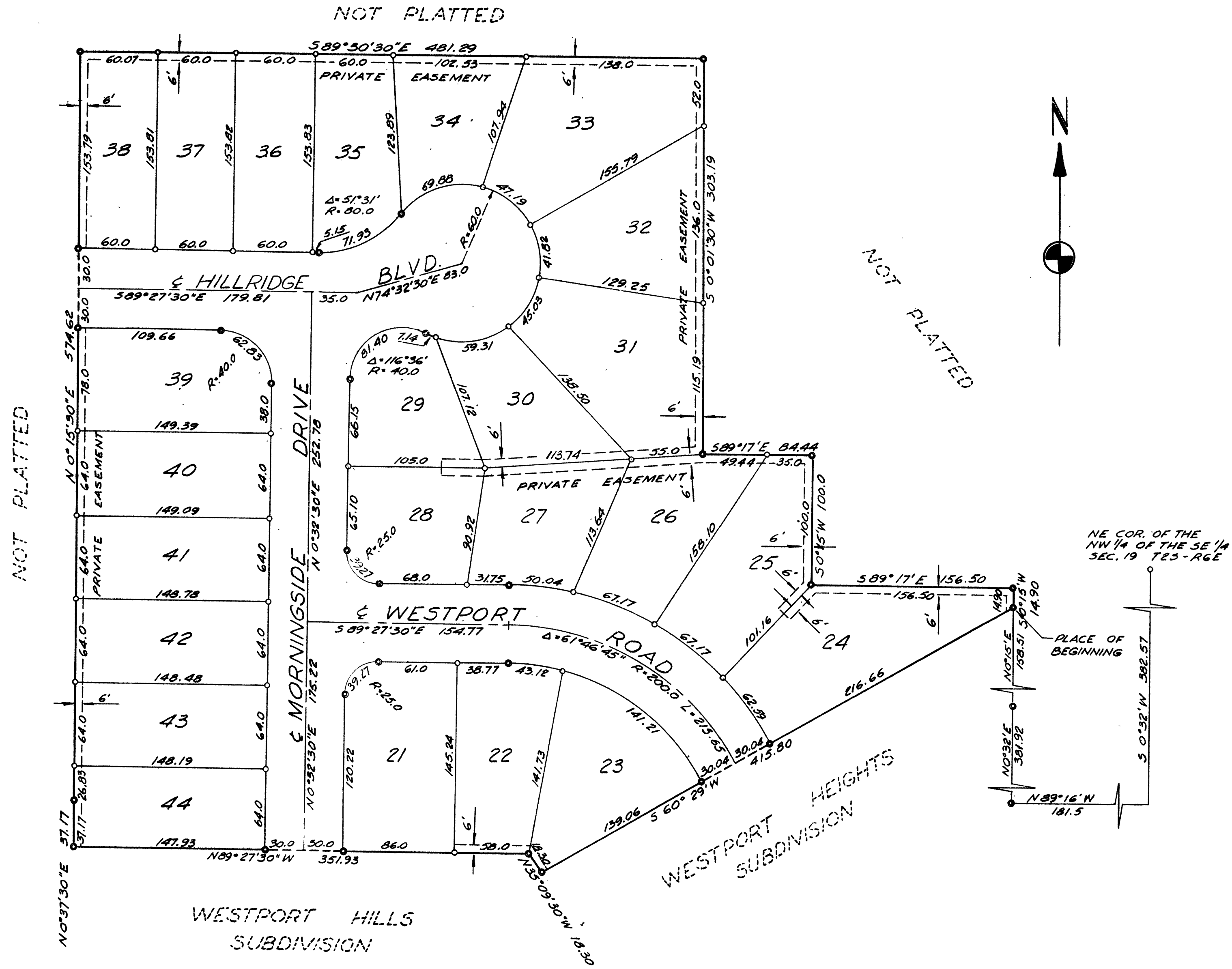
WESTPORT HILLS SUBDIVISION No 2

SHEET 1 OF 2

A SUBDIVISION OF PART OF THE SW 1/4 OF THE NE 1/4 AND PART OF THE NW 1/4 OF THE SE 1/4 OF SEC. 19, T.2 S. - R.6 E., CITY OF ANN ARBOR, WASHTENAW COUNTY, MICHIGAN



ALL DIMENSIONS IN FEET AND DECIMALS THEREOF
ALL DIMENSIONS ON CURVES ARE ARC LENGTHS
SURVEY BY ATWELL - HICKS, INC.



WESTPORT HILLS SUBDIVISION No 2

SHEET 2 OF 2

A SUBDIVISION OF PART OF THE SW 1/4 OF THE NE 1/4 AND PART OF THE NW 1/4 OF THE SE 1/4 OF SEC. 19, T.2 S - R. 6 E., CITY OF ANN ARBOR, WASHTENAW COUNTY, MICHIGAN

DEDICATION

KNOW ALL MEN BY THESE PRESENTS, that we, Neil O. Staebler, doing business under the assumed name of Staebler and Son, Burnette Staebler, his wife, Edward C. Bliska, and Virginia T. Bliska, his wife as proprietors, have caused the land embraced in the annexed plat to be surveyed, laid out and platted, to be known as "WESTPORT HILLS SUBDIVISION NO. 2", a subdivision of part of the SW 1/4 of the NE 1/4 and part of the NW 1/4 of the SE 1/4 of Sec. 19, T. 2 S. - R. 6 E., City of Ann Arbor, Washtenaw County, Michigan, and that the road, drive, and boulevard as shown on said plat are hereby dedicated to the use of the public.

Signed and Sealed in the presence of:

Kenneth Heininger
(Witness)
Vera Pocock
(Witness)

Neil O. Staebler . L.S.
Neil O. Staebler
Burnette Staebler . L.S.
Burnette Staebler
Edward C. Bliska . L.S.
Edward C. Bliska
Virginia T. Bliska . L.S.
Virginia T. Bliska

ACKNOWLEDGMENT

STATE OF MICHIGAN)
County of *Washtenaw* ss.

On this *21* day of *September*, 19*54*, before me, a Notary Public in and for said County, personally came the above named Neil O. Staebler, Burnette Staebler, Edward C. Bliska, and Virginia T. Bliska known to me to be the persons who executed the above dedication, and acknowledged the same to be their free act and deed.

Kenneth Heininger
Notary Public, *Washtenaw* County
My Commission expires *Nov. 12, 1956*

SURVEYOR'S CERTIFICATE

I hereby certify that the plat hereon delineated is a correct one and that permanent metal monuments consisting of bars not less than one-half inch in diameter and 36 inches in length, or shorter bars of not less than one-half inch in diameter lapped over each other at least 6 inches with an overall length of not less than 36 inches, encased in a concrete cylinder at least 4 inches in diameter and 36 inches in depth have been placed at points marked thus (⊙) as thereon shown at all angles in the boundaries of the land platted, at all the intersections of streets, intersections of alleys, or of streets and alleys, and at the intersections of streets and alleys with the boundaries of the plat as shown on said plat.

Herbert S. Hicks
Herbert S. Hicks
Registered Land Surveyor and Professional Engineer # 1715

DESCRIPTION OF LAND PLATTED

The land embraced in the annexed plat of "WESTPORT HILLS SUBDIVISION NO. 2", a subdivision of part of the SW 1/4 of the NE 1/4 and part of the NW 1/4 of the SE 1/4 of Sec. 19, T. 2 S. - R. 6 E., City of Ann Arbor, Washtenaw County, Michigan is described as follows:

COMMENCING at the NE corner of the NW 1/4 of the SE 1/4 of Sec. 19, T. 2 S. - R. 6 E., Ann Arbor Township, City of Ann Arbor, Washtenaw County, Michigan; thence S 0°-32'-00" W 382.57 feet; thence N 89°-16'-00" W 181.50 feet; thence N 0°-32'-00" E 381.92 feet; thence N 0°-15'-00" E 158.51 feet for a PLACE OF BEGINNING; thence S 60°-29'-00" W 415.80 feet; thence N 35°-09'-30" W 18.30 feet; thence N 89°-27'-30" W 351.93 feet; thence N 0°-37'-30" E 37.17 feet; thence N 0°-15'-30" E 574.62 feet; thence S 89°-30'-30" E 481.29 feet; thence S 0°-01'-30" W 303.19 feet; thence S 89°-17'-00" E 84.44 feet; thence S 0°-15'-00" W 100.0 feet; thence S 89°-17'-00" E 156.50 feet; thence S 0°-15'-00" W 14.90 feet to the place of beginning, containing 24 lots numbered 21 to 44.

APPROVAL BY COUNTY PLAT BOARD

This plat was approved on the *19th* day of *November*, 19*54* by the Washtenaw County Plat Board.

Thomas A. FitzGerald (County Register of Deeds)
J. Martin Rempp (Auditor)
Adolph F. Gross (Auditor)
Herbert G. Loeffler (Auditor)

COPY

Register's Office
Washtenaw County, ss.

Plat of *Westport Hills Sub.*
Division No. 2 - City of Ann Arbor
was recorded this *26th* day of *November*, A.D., 19*54* at *4:00* o'clock
P.M. in Liber *12* of *Plats*
in Page *33 and 34*

I hereby certify this copy is a true copy of map or plat forwarded the Register of Deeds for recording.

Date *November 22, 1954*
Filed in Auditor Generals Dept.
Date *December 3, 1954*
Examined and approved
Date *November 22, 1954*

John B. Masten
Auditor General
Thomas A. FitzGerald
Register of Deeds

ORIGINAL ON FILE

MUNICIPAL APPROVAL

This plat was approved by the Common Council of the City of Ann Arbor at a meeting held *Oct. 4, 1954*.

Fred J. Looker
Fred J. Looker (Clerk)

CITY CLERK'S CERTIFICATE

Office of City Clerk, City of Ann Arbor.
I hereby certify that the width and depth of lots shown on this plat are in compliance with rules and regulations of the City of Ann Arbor and the requirements as to width and depth of Section 30 of Act 172 Public Act of 1929 as amended by Act 186 Public Act of 1954.

Fred J. Looker
Fred J. Looker (Clerk)

MUNICIPAL APPROVAL

This plat was approved by the Board of Public Works of the City of Ann Arbor at a meeting held *Sept. 27, 1954*.

Fred J. Looker
Fred J. Looker (Clerk)

CERTIFICATE OF APPROVAL BY THE CITY PLANNING COMMISSION

This plat was approved by the Planning Commission of the City of Ann Arbor, Michigan at a meeting held on the *21* day of *SEPTEMBER*, 1954.

John E. Swisher, Jr. (Chairman)
Sybil K. Bennett (Secretary)

COUNTY TREASURER'S CERTIFICATE

Office of County Treasurer, Washtenaw County.
I hereby certify, that there are no tax liens or titles held by the State on the land described hereon, and that there are no tax liens or titles held by individuals on said lands, for the five years preceding the *15th* day of *November*, 19*54*, and that the taxes for said period of five years are all paid, as shown by the records of this office.
This certificate does not apply to taxes, if any, now in process of collection by township, city or village collecting office.

W. F. Verner
W. F. Verner (County Treasurer)