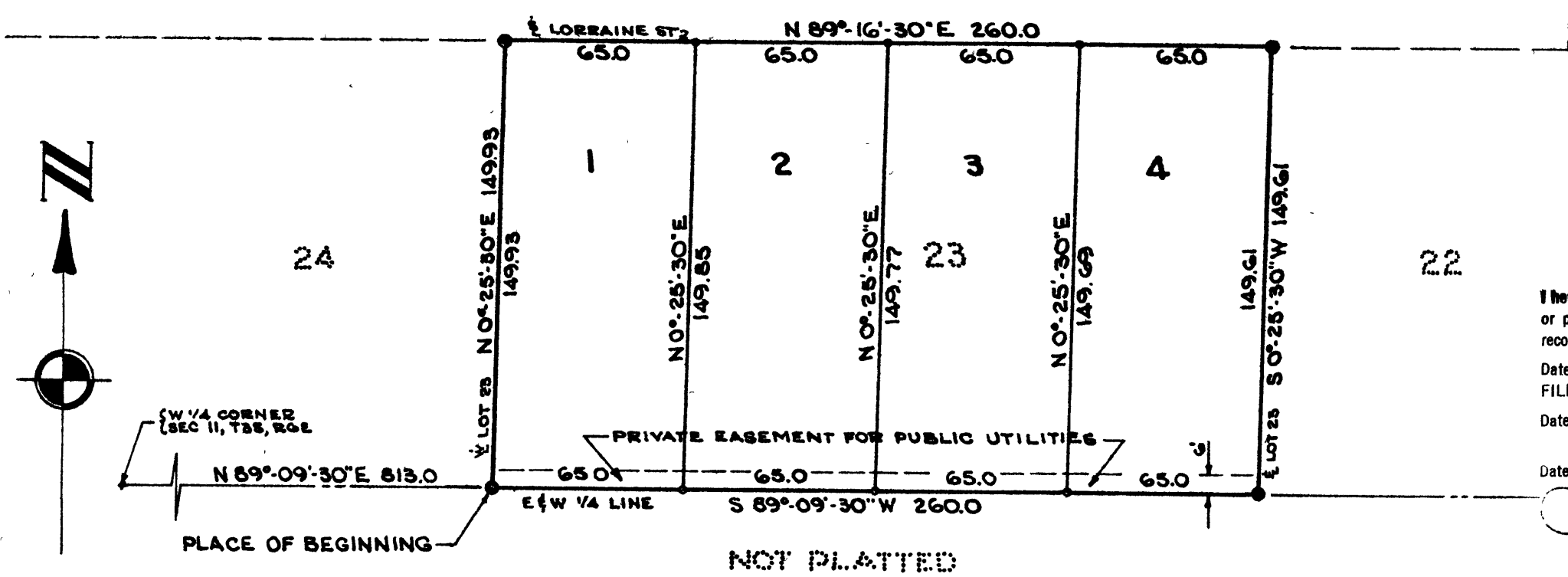


**TIMKEN SUBDIVISION**  
OF PART OF THE W 1/2 OF THE NW 1/4 OF SECTION 11,  
T 3 S, R 6 E, CITY OF ANN ARBOR, WASHTENAW COUNTY,  
MICHIGAN; BEING A REPLAT OF LOT 23 OF "WAGNER -  
MCCOMB BOULEVARD GARDENS" A SUBDIVISION IN THE  
CITY OF ANN ARBOR, WASHTENAW COUNTY, MICHIGAN  
SCALE: 1" = 50'  
ALL DIMENSIONS IN FEET AND DECIMALS THEREOF  
SURVEY BY ATWELL-HICKS, INC.



I hereby certify this copy is a true copy of map  
or plat forwarded to the office of deeds for  
recording.  
Date March 29, 1961  
FILED IN AUDITOR'S OFFICE  
Date April 6, 1961  
EXAMINED AND APPROVED  
Date March 29, 1961  
*Otis M. Smith*  
OTIS M. SMITH  
AUDITOR GENERAL  
By *Lynn D. Munn*  
LYNN D. MUNN  
DIRECTOR, TAX DIVISION

**COPY**  
Register's Office  
Washtenaw County, Mich.  
Plat of Timken Subdivision  
was Recorded this 31st day of  
March A.D., 1961 at 10:37 o'clock  
A.M. in Liber 15 of plats  
on Page 48  
*Patricia Newkirk Hardy*  
Register of Deeds

**DEDICATION**

KNOW ALL MEN BY THESE PRESENTS, that Timken Construction Company, a Michigan Corporation, by Morton Graddis, President, as proprietor, has caused the land embraced in the annexed plat to be surveyed, laid out and platted to be known as TIMKEN SUBDIVISION of part of the W 1/2 of the NW 1/4 of Section 11, T3S, R6E, City of Ann Arbor, Washtenaw County, Michigan; being a replat of Lot 23 of "Wagner - McComb Boulevard Gardens", a Subdivision in the City of Ann Arbor, Washtenaw County, Michigan.

Signed in the Presence of:  
*Barbara J. Gordon* Witness  
*Richard E. Bidstrup* Witness  
*Morton Graddis* President  
TIMKEN CONSTRUCTION COMPANY

**CERTIFICATE OF MUNICIPAL APPROVAL**

This plat was approved by the Common Council of the City of Ann Arbor at a meeting held January 28, 1961 and that the width of lots is in compliance with requirements of Section 30, Act 172, of 1929, as amended.

*Fred J. Looker*  
Fred J. Looker, Clerk

**CERTIFICATE OF APPROVAL BY THE CITY PLANNING COMMISSION**

This plat was approved by the Planning Commission of the City of Ann Arbor, Michigan at a meeting held on the 23rd day of AUGUST, 1960.

*Richard A. Ware*  
Richard A. Ware, Chairman  
*William J. Both*  
William J. Both, Secretary

**ACKNOWLEDGMENT**

STATE OF MICHIGAN )  
                                  ) ss.  
County of Washtenaw )

On this 27th day of July, A.D. 1960, before me, *Barbara J. Gordon*, a Notary Public in and for said county appeared Morton Graddis to me personally known, who being by me duly sworn did say that he is the President of the Timken Construction Company, a Michigan corporation and that said instrument was signed in behalf of said corporation by authority of its Board of Directors and the said Morton Graddis acknowledged said instrument to be the free act and deed of said corporation.

*Barbara J. Gordon*  
Barbara J. Gordon  
Notary Public Washtenaw County  
My Commission expires August 19, 1960

**DESCRIPTION OF LAND PLATTED**

The land embraced in the annexed plat of TIMKEN SUBDIVISION of part of the W 1/2 of the NW 1/4 of Section 11, T3S, R6E, City of Ann Arbor, Washtenaw County, Michigan; being a replat of Lot 23 of "Wagner - McComb Boulevard Gardens" a Subdivision in the City of Ann Arbor, Washtenaw County, Michigan, is described as follows:

Commencing at the W 1/4 corner of Section 11, T3S, R6E, City of Ann Arbor, Washtenaw County, Michigan; thence along the E and W 1/4 line of said Section 11, N 89°-09'-30" E 813.0 feet for a PLACE OF BEGINNING; thence N 0°-25'-30" E 149.93 feet to the south line of Lorraine Street; thence along the south line of Lorraine Street, N 89°-16'-30" E 260.0 feet; thence S 0°-25'-30" W 149.61 feet; thence S 89°-09'-30" W 260.0 feet to the Place of Beginning, containing 4 Lots numbered 1 through 4 inclusive.

**SURVEYOR'S CERTIFICATE**

I hereby certify that the plat hereon delineated is a correct one and that permanent metal monuments consisting of bars not less than one-half inch in diameter and 36 inches in length, or shorter bars of not less than one-half inch in diameter lapped over each other at least 6 inches with an over-all length of not less than 36 inches, encased in a concrete cylinder at least 4 inches in diameter and 36 inches in depth have been placed at points marked thus (⊙) as thereon shown at all angles in the boundaries of the land platted, at all the intersections of streets, intersections of alleys, or of streets and alleys, and at the intersections of streets and alleys with the boundaries of the plat as shown on said plat.

*Robert J. Jagow*  
Robert J. Jagow  
Registered Land Surveyor # 6998

**COUNTY TREASURER'S CERTIFICATE**  
Office of County Treasurer, Washtenaw County

I hereby certify, that there are no tax liens or titles held by the State on the lands described hereon, and that there are no tax liens or titles held by individuals on said lands for the five years preceding the 27th day of March, 1961, and that the taxes for said period of five years are all paid, as shown by the records of this office.

*W.F. Verner*  
W.F. Verner (County Treasurer)

**APPROVAL BY COUNTY PLAT BOARD**

This plat was approved on the 28th day of March, 1961, by the Washtenaw County Plat Board.

*Patricia Newkirk Hardy* John H. Flook  
Patricia Newkirk Hardy County Register of Deeds John H. Flook County Drain Commissioner  
*J. Martin Rempp* Herbert G. Loeffler  
J. Martin Rempp Auditor Herbert G. Loeffler Auditor  
*John P. Cook*  
John P. Cook Auditor