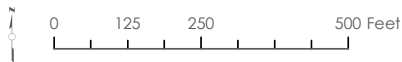
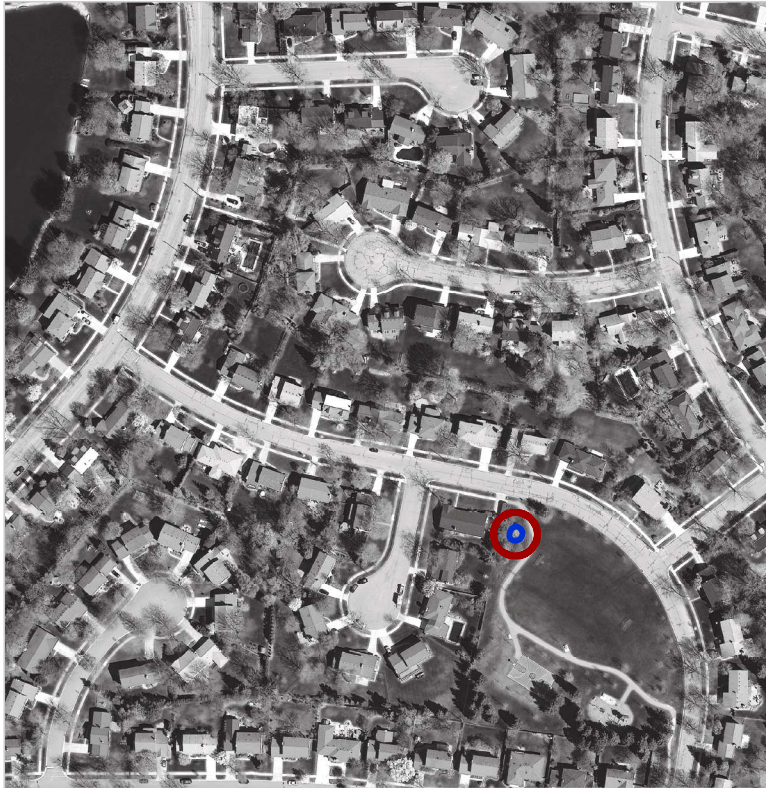
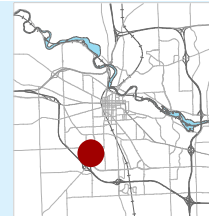


# Lansdowne Park Rain Garden

Approximate Address: Lans Way at Ascot Rd.



Year Built: 2007

Designer: Susan Bryan, City of Ann Arbor

Aesthetic Level Required: High

## DESCRIPTION:

This rain garden takes runoff from the asphalt walkway, the neighbor's back yards, and an underground spring. The garden easily blends into the natural plantings surrounding it.

## MAINTENANCE NOTES:

Stays wet all winter due to groundwater, so only plants who can take standing water will survive.



June 2014

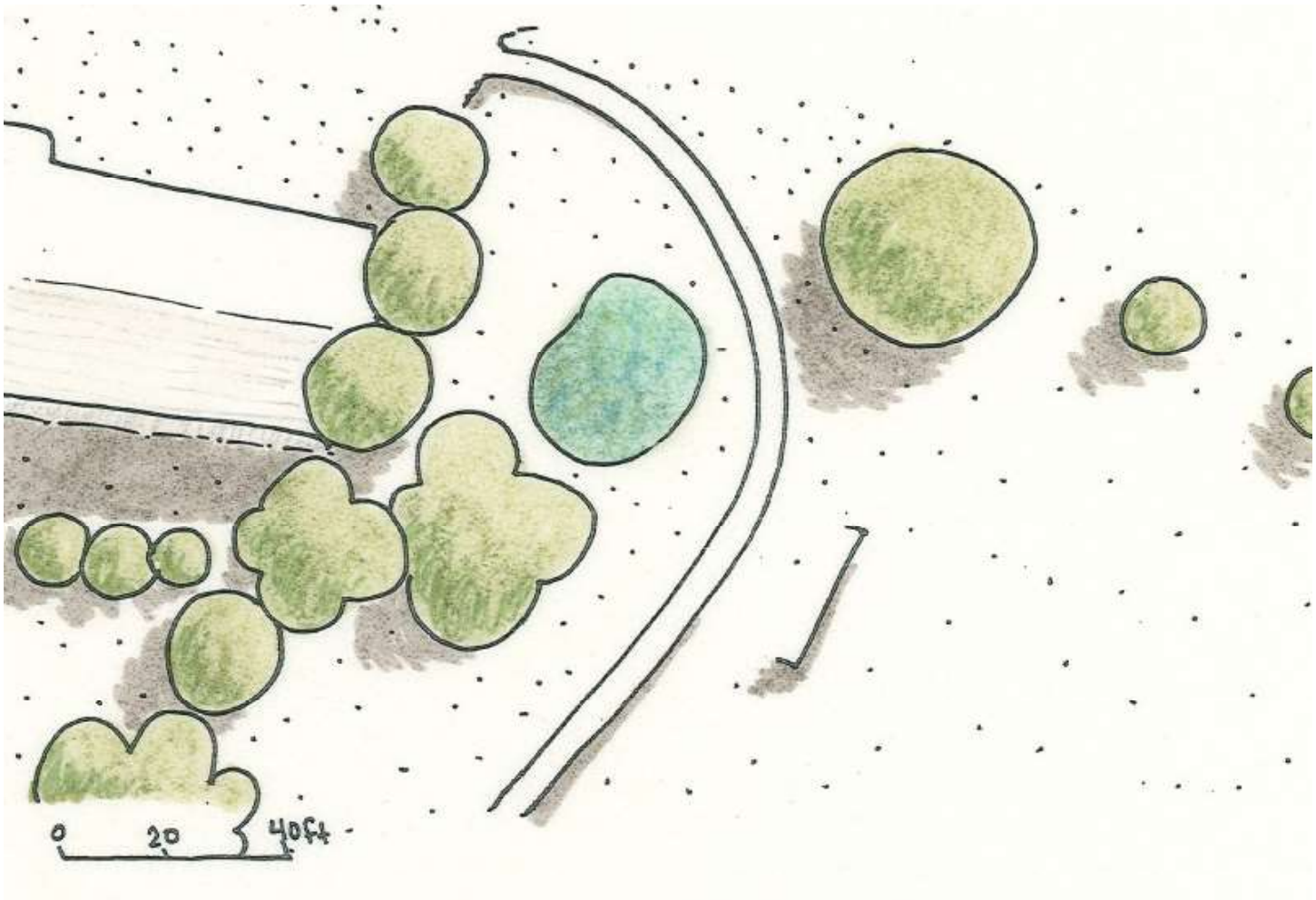
ACTIVITY	Monthly	Biannually	Annually	As Needed
Remove Trash	X			
Remove Invasives	X			
Remove Sediment				X
Controlled Burns				X
Herbicide				X
Add/Divide Plants				X
Collect Seeds			fall	

YEARLY ESTIMATE	HOURS	COST
Supervisor Labor	12	\$488
Volunteer Labor		
Equipment		\$87
Controlled Burns		\$7
Herbicide		
Contingency (10%)		\$58
SUM		\$640

# Lansdowne Park Rain Garden

Site Plan

Acres: 0.01  
SF: 420



## NATIVE PLANTS TO LOOK FOR:

### Perennials:

Aster spp.  
Blue Flag Iris (*Iris versicolor*)  
Fox Sedge (*Carex vulpinoidea*)  
Golden Alexanders (*Zizia aurea*)  
Swamp Milkweed (*Asclepias incarnata*)

### Shrubs and Trees:

Eastern Cottonwood (*Populus deltoides*)  
Elderberry (*Sambucus canadensis*)  
Red-osier Dogwood (*Cornus sericea*)