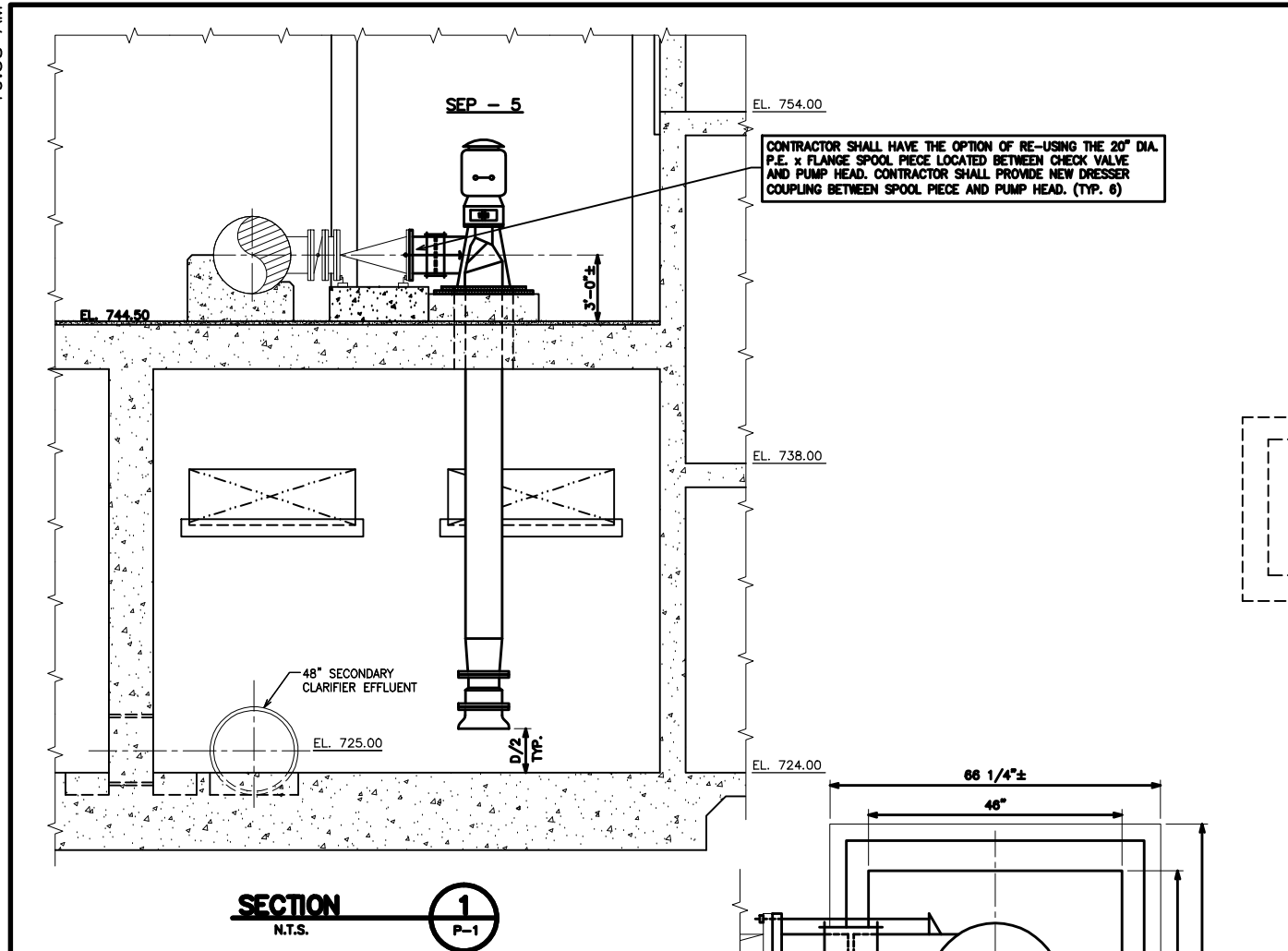


3/7/2014
10:58 AM

V:\201208\20120802\FilterBldg_FIG_1.dwg

Paredes Eduardo



PROCESS NOTES

P-1. THESE DRAWINGS GENERALLY REPRESENT THE INSTALLATION OF THE PUMP MODELS SPECIFIED. THEREFORE, INSTALLATION OF THE PUMPS MAY BE DIFFERENT THAN THAT SHOWN. THE COST FOR ANY MODIFICATIONS, TO THE INSTALLATION OF THAT SHOWN DUE TO THE DIFFERING DIMENSIONS OF THE SPECIFIED PUMPS, SHALL BE BORNE BY THE CONTRACTOR.

P-2. THE CONCRETE PUMP PEDESTALS SHOWN ARE REPRESENTATIVE OF THE EXISTING INSTALLATION, BUT ARE NOT NECESSARILY PRECISE OR THE SAME FOR EACH PUMP. THE CONTRACTOR IS RESPONSIBLE FOR ALL FIELD MEASUREMENTS, PRIOR TO DEVELOPING SHOP DRAWINGS.

P-3. THE PUMPS SHALL BE INSTALLED PER THE MANUFACTURER'S INSTRUCTIONS.

P-4. ALL HARDWARE, ANCHORS, FASTENERS, SHIMS, NUTS, BOLTS AND WASHERS, ETC. SHALL BE 316SS.

P-5. THE PUMPS SHALL BE INSTALLED PER THE MANUFACTURER'S INSTRUCTIONS.

P-6. ALL HARDWARE, ANCHORS, FASTENERS, SHIMS, NUTS, BOLTS AND WASHERS, ETC. SHALL BE 316SS.

P-7. THE PUMPS SHALL BE INSTALLED PER THE MANUFACTURER'S INSTRUCTIONS.

P-8. ALL HARDWARE, ANCHORS, FASTENERS, SHIMS, NUTS, BOLTS AND WASHERS, ETC. SHALL BE 316SS.

P-9. THE PUMPS SHALL BE INSTALLED PER THE MANUFACTURER'S INSTRUCTIONS.

P-10. ALL HARDWARE, ANCHORS, FASTENERS, SHIMS, NUTS, BOLTS AND WASHERS, ETC. SHALL BE 316SS.

P-11. THE PUMPS SHALL BE INSTALLED PER THE MANUFACTURER'S INSTRUCTIONS.

P-12. ALL HARDWARE, ANCHORS, FASTENERS, SHIMS, NUTS, BOLTS AND WASHERS, ETC. SHALL BE 316SS.

P-13. THE PUMPS SHALL BE INSTALLED PER THE MANUFACTURER'S INSTRUCTIONS.

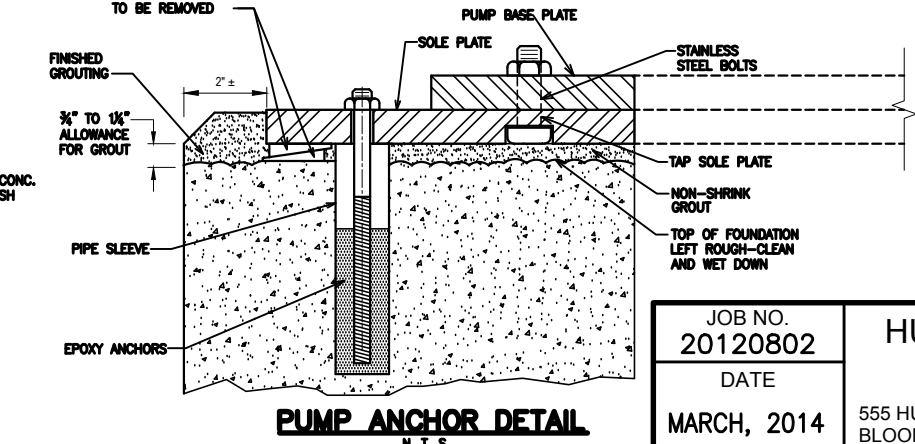
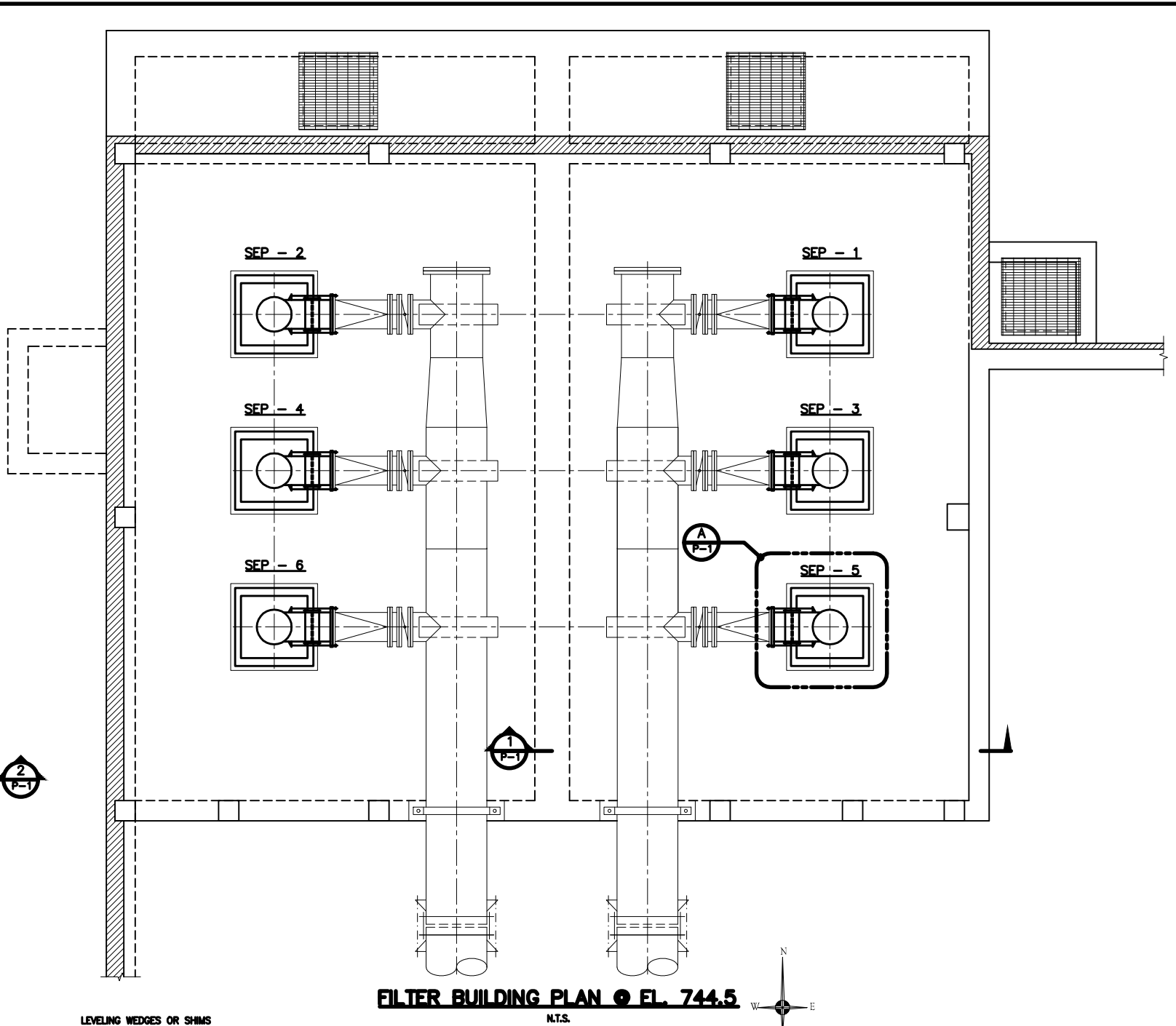
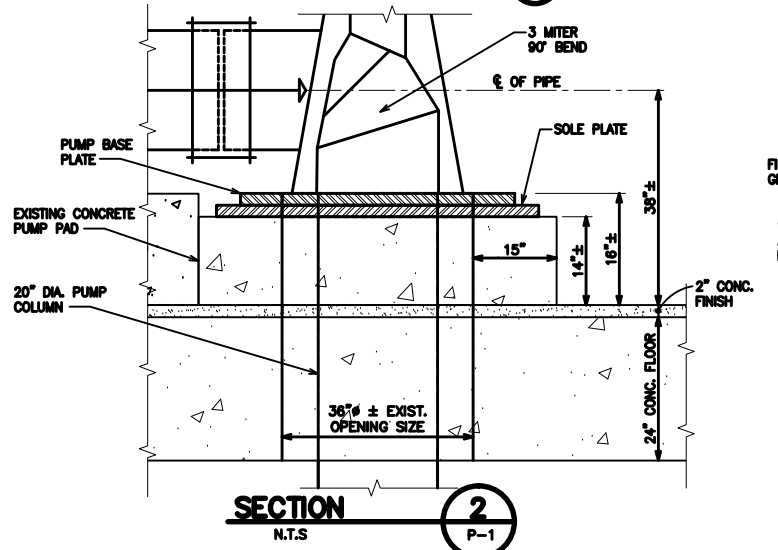
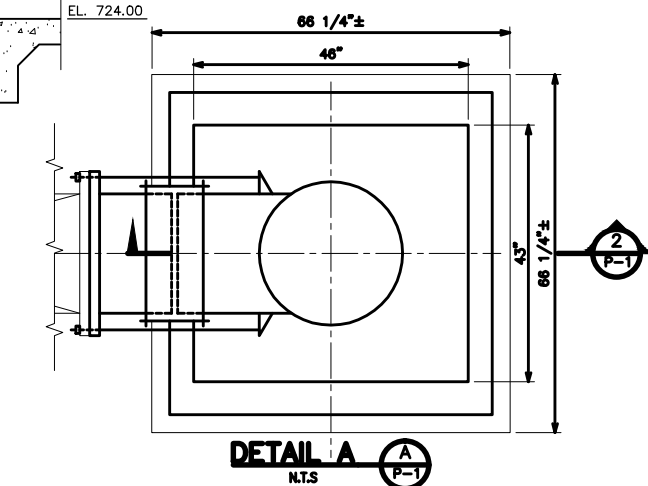
P-14. ALL HARDWARE, ANCHORS, FASTENERS, SHIMS, NUTS, BOLTS AND WASHERS, ETC. SHALL BE 316SS.

P-15. THE PUMPS SHALL BE INSTALLED PER THE MANUFACTURER'S INSTRUCTIONS.

P-16. ALL HARDWARE, ANCHORS, FASTENERS, SHIMS, NUTS, BOLTS AND WASHERS, ETC. SHALL BE 316SS.

P-17. THE PUMPS SHALL BE INSTALLED PER THE MANUFACTURER'S INSTRUCTIONS.

P-18. ALL HARDWARE, ANCHORS, FASTENERS, SHIMS, NUTS, BOLTS AND WASHERS, ETC. SHALL BE 316SS.



JOB NO. 20120802	HUBBELL, ROTH & CLARK, INC.	SHEET NO.
DATE MARCH, 2014	CONSULTING ENGINEERS	FIGURE 1
	555 HULET DRIVE BLOOMFIELD HILLS, MICH.	OF
	P.O. BOX 824 48303-0824	