

11-3-50

# "ARBORDALE SUBDIVISION NUMBER ONE"

PART OF THE NW 1/4 OF THE NE 1/4 OF  
SECTION 31, TOWN 2 SOUTH, RANGE 6 EAST,  
CITY OF ANN ARBOR,  
WASHTENAW COUNTY, MICHIGAN.

SCALE: ONE INCH = EIGHTY FEET.  
NOTE: DIMENSIONS ARE IN FEET  
AND DECIMALS THEREOF

## DESCRIPTION OF LAND PLATTED

The annexed plat of "ARBORDALE SUBDIVISION NUMBER ONE" Part of the northwest quarter of the northeast quarter of Section 31, Town 2 South, Range 6 East, City of Ann Arbor, Washtenaw County, Michigan is described as follows:  
Beginning at a point in the north line of section 31, Town 2 South, Range 6 East, City of Ann Arbor, Washtenaw County, Michigan 265.60 feet east of the north quarter post of said section; thence south 00°-00'-30" east 833.26 feet; thence south 89°-20' east 371.81 feet; thence south 00°-02'-30" east 4.0 feet; thence north 21°-02'-30" east 130.11 feet; thence north 27°-57'-30" east 89.89 feet; thence south 80°-22'-30" east 72.77 feet; thence north 9°-08' east 30.09 feet to the beginning of a circular curve to the left of radius 552.57 feet; thence northerly along the arc of said curve 222.46 feet; the chord subtending said arc being 220.96 feet in length and bears north 2°-24' west to the beginning of a circular curve to the left of radius 273.09 feet, this curve and the preceding curve having a common tangent; thence northwesterly in the arc of said curve 148.71, the chord subtending said arc being 146.88 feet in length and bears north 29°-32' west; thence north 45°-08' west in the tangent to the last curve 18.16 feet to the beginning of a circular curve to the left of radius 222.98 feet; thence northwesterly in the arc of said curve 55.46 feet, the chord subtending said arc being 55.25 feet in length and bears north 52°-15' west; thence N. 39°-34' east 61.07 feet to the beginning of a circular curve to the right of radius 138.17 feet; thence northeasterly in the arc of said curve 61.57 feet, the chord subtending said arc being 61.06 feet in length and bears north 52°-20' east; thence north 11°-52'-30" west 132.72 feet to the north line of Section 31; thence north 89°-21'-30" west in the north line of said section 459.02 feet to the place of beginning.

## DEDICATION

KNOW ALL MEN BY THESE PRESENTS, that we, John E Swisher and Elisabeth Swisher, husband and wife, as proprietors, have caused the land embraced in the annexed plat to be surveyed, laid out and platted, to be known as "ARBORDALE SUBDIVISION NUMBER ONE" part of the northwest quarter of the northeast quarter of Section 31, Town 2 South, Range 6 East, City of Ann Arbor, Washtenaw County, Michigan, and that the streets and public easements as shown on said plat are hereby dedicated to the use of the public.

Signed and Sealed in the Presence of:

*John H. Husselman* (Witness) John H. Husselman  
*John E. Swisher* John E. Swisher  
*Elisabeth Swisher* Elisabeth Swisher  
*Eleanor Kilpatrick* (Witness) Eleanor Kilpatrick

## ACKNOWLEDGEMENT

STATE OF MICHIGAN  
County of Washtenaw ss

On this 27th day of September, 1950, before me, a Notary Public in and for said County, personally came the above named John E. Swisher and Elisabeth Swisher, husband and wife, known to me to be the persons who executed the above dedication, and acknowledged the same to be their free act and deed.

*Eleanor Kilpatrick*  
Notary Public, Washtenaw County  
My Commission expires  
March 27, 1951

## SURVEYOR'S CERTIFICATE

I hereby certify that the plat hereon delineated is a correct one and that permanent metal monuments consisting of bars not less than one-half inch in diameter and 48 inches in length, or shorter bars of not less than one-half inch in diameter lapped over each other at least 6 inches with an overall length of not less than 48 inches, encased in a concrete cylinder at least 4 inches in diameter and 48 inches in depth have been placed at points marked thus © as thereon shown at all angles in the boundaries of the land platted, at all intersections of streets, intersections of alleys, or of streets and alleys, and at the intersections of streets and alleys with the boundaries of the plat as shown on said plat.

*H. H. Atwell*  
H. H. Atwell, Reg. C. E. & Surveyor

## CERTIFICATE OF APPROVAL BY THE CITY PLANNING COMMISSION

This plat was approved by the Planning Commission of the City of Ann Arbor at a meeting held September 26, 1950

*John A. McMullen*  
John A. McMullen, Chairman  
*Frederick N. McOmber*  
Frederick N. McOmber, Secretary

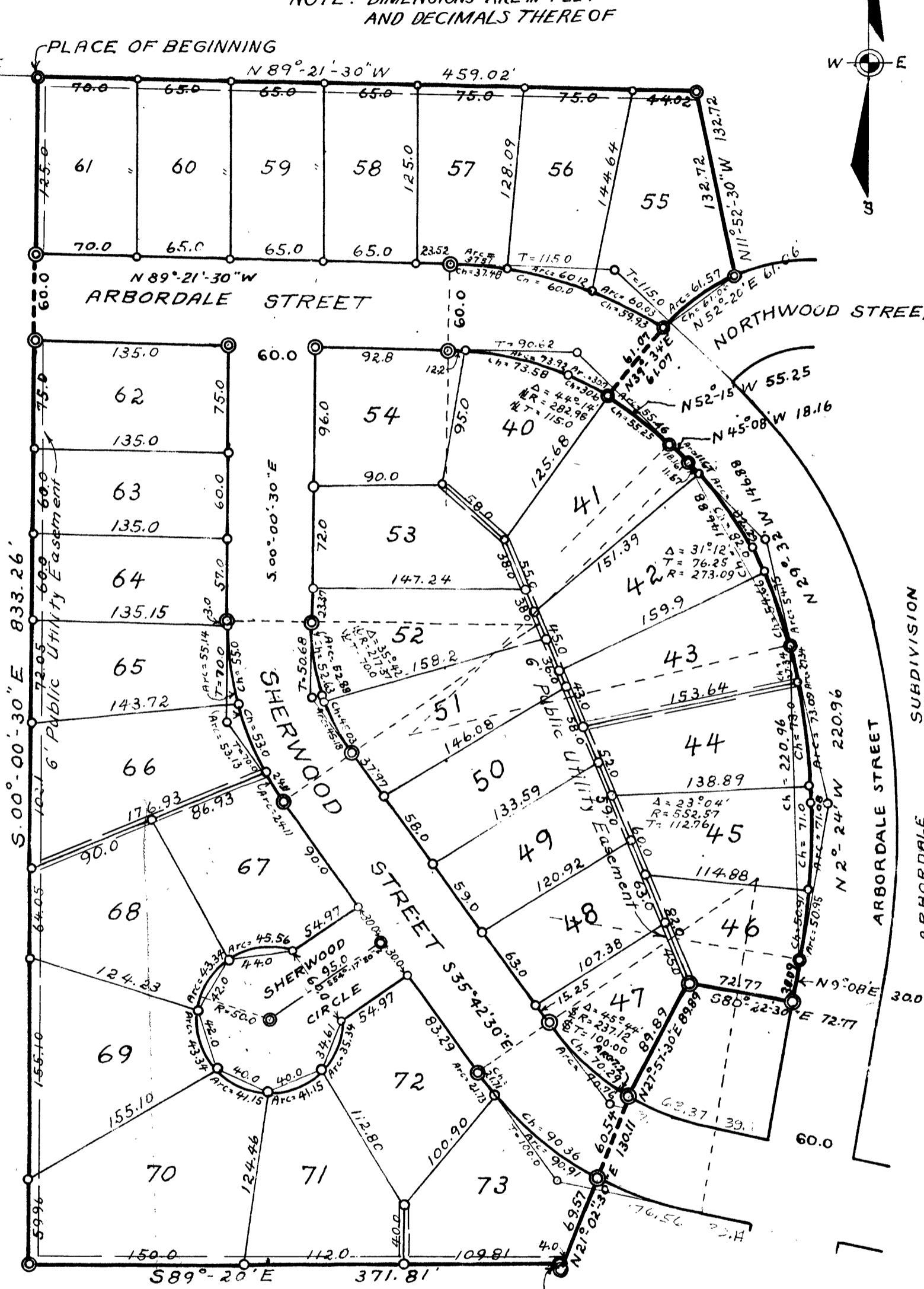
## COUNTY TREASURER'S CERTIFICATE

Office of the County Treasurer  
Washtenaw County.

I hereby certify, that there are no tax liens or titles held by the State on the lands described hereon, and that there are no tax liens or titles held by individuals on said lands, for the five years preceding the 29th day of September, 1950, and that the taxes for said period of five years are all paid, as shown by the records of this office, except.....

This certificate does not apply to taxes, if any, now in process of collection by township, city or village collecting officers.

*W. F. Verner*  
W. F. Verner, County Treasurer



## APPROVAL BY BOARD OF COUNTY AUDITORS

This plat has been examined and was approved on the 27th day of September, 1950, by the Board of County Auditors of Washtenaw County, Michigan.

*J. Martin Rempp*  
J. Martin Rempp, Chairman  
*L. O. Cushing*  
L. O. Cushing  
*John E. Walz*  
John E. Walz

## CERTIFICATE OF MUNICIPAL APPROVAL

This plat was approved by the Common Council of the City of Ann Arbor at a meeting held October 16, 1950

*Fred J. Looker*  
Fred J. Looker, Clerk

## CERTIFICATE OF APPROVAL BY THE BOARD OF PUBLIC WORKS

This plat was approved by the Board of Public Works of the City of Ann Arbor at a meeting held October 4, 1950

*Fred J. Looker*  
Fred J. Looker, Clerk

Register's Office  
Washtenaw County  
Plat of Arbordale Subdivision  
was Recorded this 27th day of September, 1950, at 10:00 o'clock  
on Page 11

EXAMINED AND APPROVED  
*Mayme Jewell Parsh*  
Mayme Jewell Parsh, Deputy Auditor General

FILED IN AUDITOR GENERAL'S OFFICE  
September 27, 1950  
*Mayme Jewell Parsh*  
Mayme Jewell Parsh, Deputy Auditor General