

RECEIVED FOR RECORD

JUL 26 9 46 AM '52

THOMAS A. FITZGERALD REGISTER OF DEEDS WASHTENAW COUNTY, MICH.

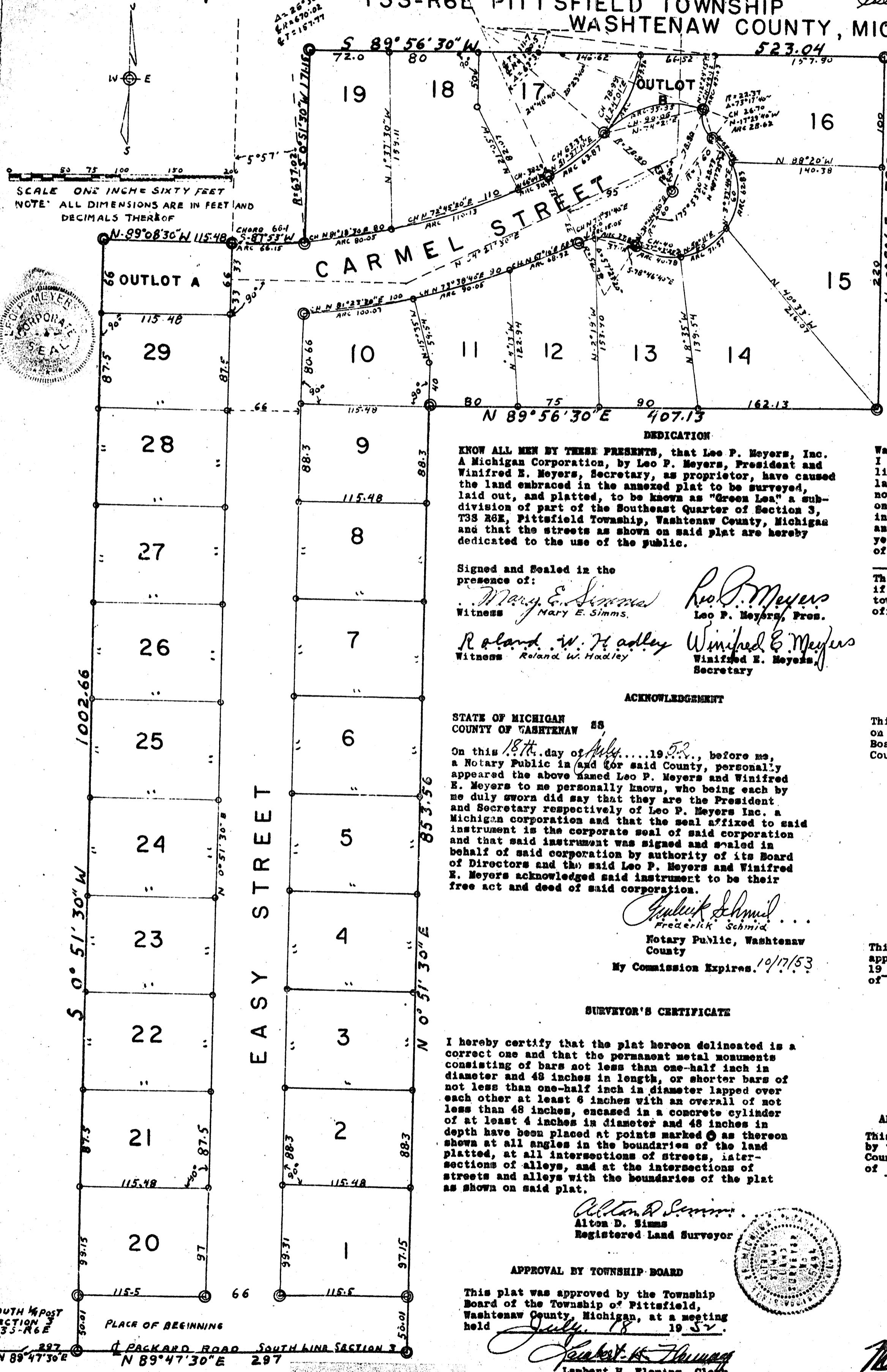
Liber 11 of Plats on Page 42

# GREEN LEA

A SUBDIVISION OF PART OF THE SOUTHEAST QUARTER OF SECTION 3 T3S-R6E PITTSFIELD TOWNSHIP WASHTENAW COUNTY, MICHIGAN

See Sec 603 Page 401

42.



**DESCRIPTION OF LAND PLATTED**

The annexed plat of "Green Lea" a subdivision of part of the southeast quarter of section 3, T3S R6E Pittsfield Township, Washtenaw County, Michigan is described as: Commencing at the south quarter post of section 3, T3S R6E, thence North 89° 47' 30" East 297 feet in the south line of section 3 for a place of beginning, thence North 89° 47' 30" East 297 feet in the South line of section 3, thence North 0° 51' 30" East 853.56 feet, thence North 89° 56' 30" East 407.13 feet, thence North 0° 51' 30" West 523.04 feet, thence South 89° 56' 30" West 171.15 feet, thence westerly 68.15 feet in the arc of a circular curve to the right of 637.02 feet radius through a central angle of 5° 51' - the chord bears South 87° 53' West 68.1 feet, thence North 89° 08' 30" West 115.48 feet, thence South 0° 51' 30" East 1062.56 feet to the place of beginning.

**COUNTY TREASURER'S CERTIFICATE**

Office of the County Treasurer, Washtenaw County.

I hereby certify, that there are no tax liens or titles held by the State on the lands described herein, and that there are no tax liens or titles held by individuals on said lands, for the five years preceding the 25th day of July, 1952, and that the taxes for said period of five years are all paid, as shown by the records of this office except:

**DEDICATION**

KNOW ALL MEN BY THESE PRESENTS, that Leo P. Meyers, Inc. a Michigan Corporation, by Leo P. Meyers, President and Winifred E. Meyers, Secretary, as proprietor, have caused the land embraced in the annexed plat to be surveyed, laid out, and platted, to be known as "Green Lea" a subdivision of part of the Southeast Quarter of Section 3, T3S R6E, Pittsfield Township, Washtenaw County, Michigan and that the streets as shown on said plat are hereby dedicated to the use of the public.

Signed and Sealed in the presence of:

*Mary E. Simms* Witness  
*Mary E. Simms* Witness  
*Leo P. Meyers* Leo P. Meyers, Pres.  
*Winifred E. Meyers* Winifred E. Meyers, Secretary

This certificate does not apply to taxes, if any, now in process of collection by township, city or village collecting officers.

*Mary Lou Coe*  
 Mary Lou Coe, Deputy Treasurer

**ACKNOWLEDGEMENT**

STATE OF MICHIGAN  
 COUNTY OF WASHTENAW SS

On this 18th day of July, 1952, before me, a Notary Public in and for said County, personally appeared the above named Leo P. Meyers and Winifred E. Meyers to me personally known, who being each by me duly sworn did say that they are the President and Secretary respectively of Leo P. Meyers Inc. a Michigan corporation and that the seal affixed to said instrument is the corporate seal of said corporation and that said instrument was signed and sealed in behalf of said corporation by authority of its Board of Directors and that Leo P. Meyers and Winifred E. Meyers acknowledged said instrument to be their free act and deed of said corporation.

*Frederick Schmid*  
 Frederick Schmid  
 Notary Public, Washtenaw County  
 My Commission Expires 10/17/53

**APPROVAL OF BOARD OF COUNTY AUDITORS**

This plat has been examined and was approved on the 25th day of July 1952 by the Board of County Auditors of Washtenaw County, Michigan.

*J. Martin Rompp*  
 J. Martin Rompp, Chairman  
*Herbert G. Loeffler*  
 Adolph F. Gross

**SURVEYOR'S CERTIFICATE**

I hereby certify that the plat hereon delineated is a correct one and that the permanent metal monuments consisting of bars not less than one-half inch in diameter and 48 inches in length, or shorter bars of not less than one-half inch in diameter lapped over each other at least 6 inches with an overall of not less than 48 inches, encased in a concrete cylinder of at least 4 inches in diameter and 48 inches in depth have been placed at points marked @ as thereon shown at all angles in the boundaries of the land platted, at all intersections of streets, intersections of alleys, and at the intersections of streets and alleys with the boundaries of the plat as shown on said plat.

*Alton D. Simms*  
 Alton D. Simms  
 Registered Land Surveyor

**APPROVAL BY BOARD OF COUNTY ROAD COMMISSIONERS**

This plat has been examined and was approved on the 18th day of July 1952 by the Washtenaw County Board of Road Commissioners.

*James C. Mastley*  
 James C. Mastley, Chairman  
*Raymond L. Lock*  
 Raymond L. Lock, Member  
*H. E. Frisling*  
 H. E. Frisling, Member

**APPROVAL BY TOWNSHIP BOARD**

This plat was approved by the Township Board of the Township of Pittsfield, Washtenaw County, Michigan, at a meeting held July 18, 1952.

*Lambert H. Fleming*  
 Lambert H. Fleming, Clerk

**APPROVAL BY COUNTY PLANNING COMMISSION**

This plat has been examined and was approved by the Planning Commission of Washtenaw County at a meeting held on the 18th day of June 1952.

*Leigh Beach*  
 Leigh Beach, Chairman  
*George F. Hurrell*  
 George F. Hurrell, Director  
*John W. Hyde*  
 John W. Hyde

Examined and Approved

*Maryne Jewell Purdy*  
 Maryne Jewell Purdy, Deputy Auditor General

