

"BROCK COURT"

A SUBDIVISION

PART OF THE SE 1/4 OF SECTION 33 - T25-R6E

IN THE CITY OF ANN ARBOR, WASHTENAW COUNTY, MICHIGAN

DEDICATION

KNOW ALL MEN BY THESE PRESENTS, that Leo P. Meyers, Inc. A Michigan Corporation, by Leo P. Meyers, President and Winifred E Meyers, Secretary, as proprietor, have caused the land embraced in the annexed plat to be surveyed, laid out, and platted, to be known as "Brock Court", located in the Southeast Quarter of Section 33, T2S, R6E, City of Ann Arbor, Washtenaw County, Michigan, and that the Streets as shown on said plat are hereby dedicated to the use of the public.

Signed and Sealed in the presence of:
 Witness FREDERICK SCHMID
 Witness GERTRUDE E. WENGER

Leo P. Meyers
 Leo P. Meyers, President
Winifred E. Meyers
 Winifred E Meyers, Sec.

I HEREBY CERTIFY THAT THIS COPY IS A TRUE COPY OF THE MAP OR PLAT FORWARDED THE REGISTER OF DEEDS FOR RECORDING.

COMPARED

Mayme Jewell

EXAMINED AND APPROVED

Mayme Jewell

FILED IN AUDITOR GENERAL'S DEPT.

ACKNOWLEDGEMENT

STATE OF MICHIGAN
 COUNTY OF WASHTENAW

On this 15th day of JANUARY, 1951, before me, a Notary Public in and for said County, personally appeared the above named Leo P. Meyers and Winifred E. Meyers to me personally known, who being each by me duly sworn did say that they are the President and Secretary respectively of Leo P. Meyers Inc. a Michigan corporation and that the seal affixed to said instrument is the corporate seal of said corporation and that said instrument was signed and sealed in behalf of said corporation by authority of its Board of directors and the said Leo P. Meyers and Winifred E Meyers acknowledged said instrument to be their free act and deed of said corporation.

FREDERICK SCHMID

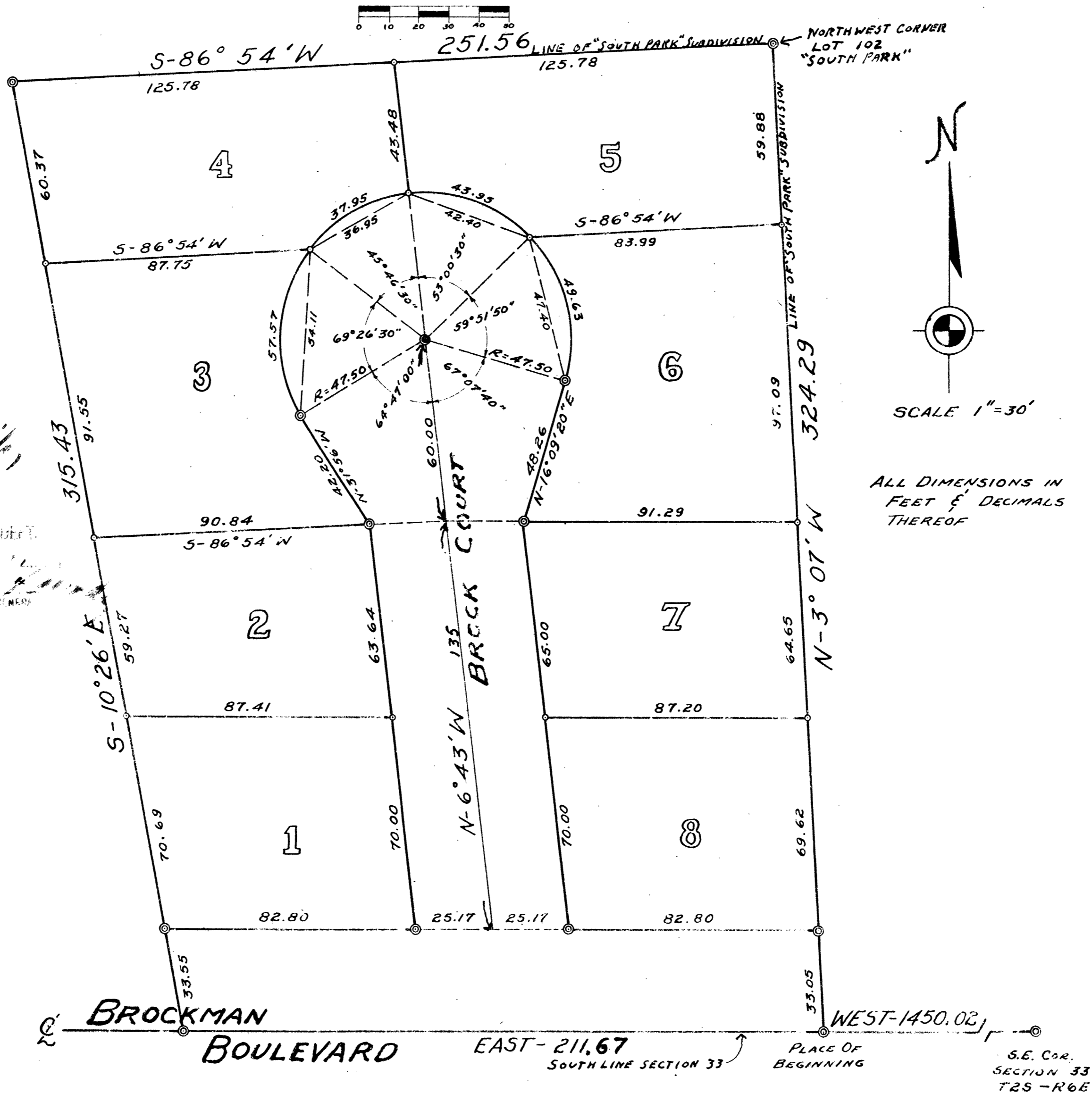
Notary Public, WASHTENAW County

My Commission Expires Oct 17, 1953

SURVEYOR'S CERTIFICATE

I hereby certify that the plat hereon delineated is a correct one and that the permanent metal monuments consisting of bars not less than one-half inch in diameter and 48 inches in length, or shorter bars of not less than one-half inch in diameter lapped over each other at least 6 inches with an overall of not less than 48 inches, encased in a concrete cylinder of at least 4 inches in diameter and 48 inches in depth have been placed at points marked @ as thereon shown at all angles in the boundaries of the land platted, at all intersections of streets, intersections of alleys, and at the intersections of streets and alleys with the boundaries of the plat as shown on said plat.

Alton D. Simms
 Alton D. Simms, Reg. Land Surveyor



DESCRIPTION OF LAND PLATED

The annexed plat of "Brock Court" a subdivision of part of the Southeast quarter of Section 33, T2S, R6E, City of Ann Arbor, Washtenaw County, Michigan is described as: Commencing at the Southeast corner of Section 33, T2S, R6E, thence West 1450.02 feet in the South line of Section 33 for a place of beginning, thence North 3°07' West 324.29 feet to the Northwest corner of Lot 102 of "South Park" Subdivision, a recorded plat, thence South 86°54' West 251.56 feet along the South line of Lots 62, 61, 60, 59, 58, and 57 of "South Park" Subdivision, thence South 10°26' East 315.43 feet, thence East 211.67 feet in the South Line of Section 33 to the place of beginning.

COUNTY TREASURER'S CERTIFICATE

Office of the County Treasurer, Washtenaw County. I hereby certify, that there are no tax liens or titles held by the State on the lands described hereon, and that there are no tax liens or titles held by individuals on said lands, for the five years preceding the 15th day of January, 1951, and that the taxes for said period of five years are all paid, as shown by the records of this office except

This certificate does not apply to taxes, if any, now in process of collection by township, city or village collecting officers.

W. F. Verner
 W. F. Verner, County Treasurer

APPROVAL BY BOARD OF COUNTY AUDITORS

This plat has been examined and was approved on the 16th day of February 1951 by the Board of County Auditors of Washtenaw County, Michigan.

J. Martin Rempp
 J. Martin Rempp, Chairman

CERTIFICATE OF MUNICIPAL APPROVAL

This plat was approved by the Common Council of the City of Ann Arbor at a meeting held February 5, 1951

Fred J. Looker
 Fred J. Looker, Clerk

CERTIFICATE OF APPROVAL BY THE BOARD OF PUBLIC WORKS

This plat was approved by the Board of Public Works of the City of Ann Arbor at a meeting held January 17, 1951

Fred J. Looker
 Fred J. Looker, Clerk

CERTIFICATE OF APPROVAL BY THE CITY PLANNING COMMISSION

This Plat was approved by the planning Commission of the City of Ann Arbor at a meeting held Jan 9, 1951

John R. McMullen
 John R. McMullen, Chairman
Frederick N. McOmber
 Frederick N. McOmber, Secretary

1657/67/40 1 40 1

