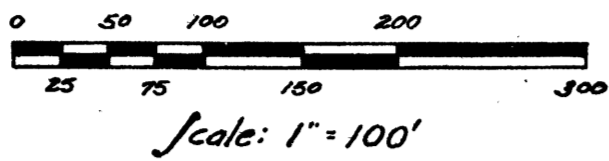
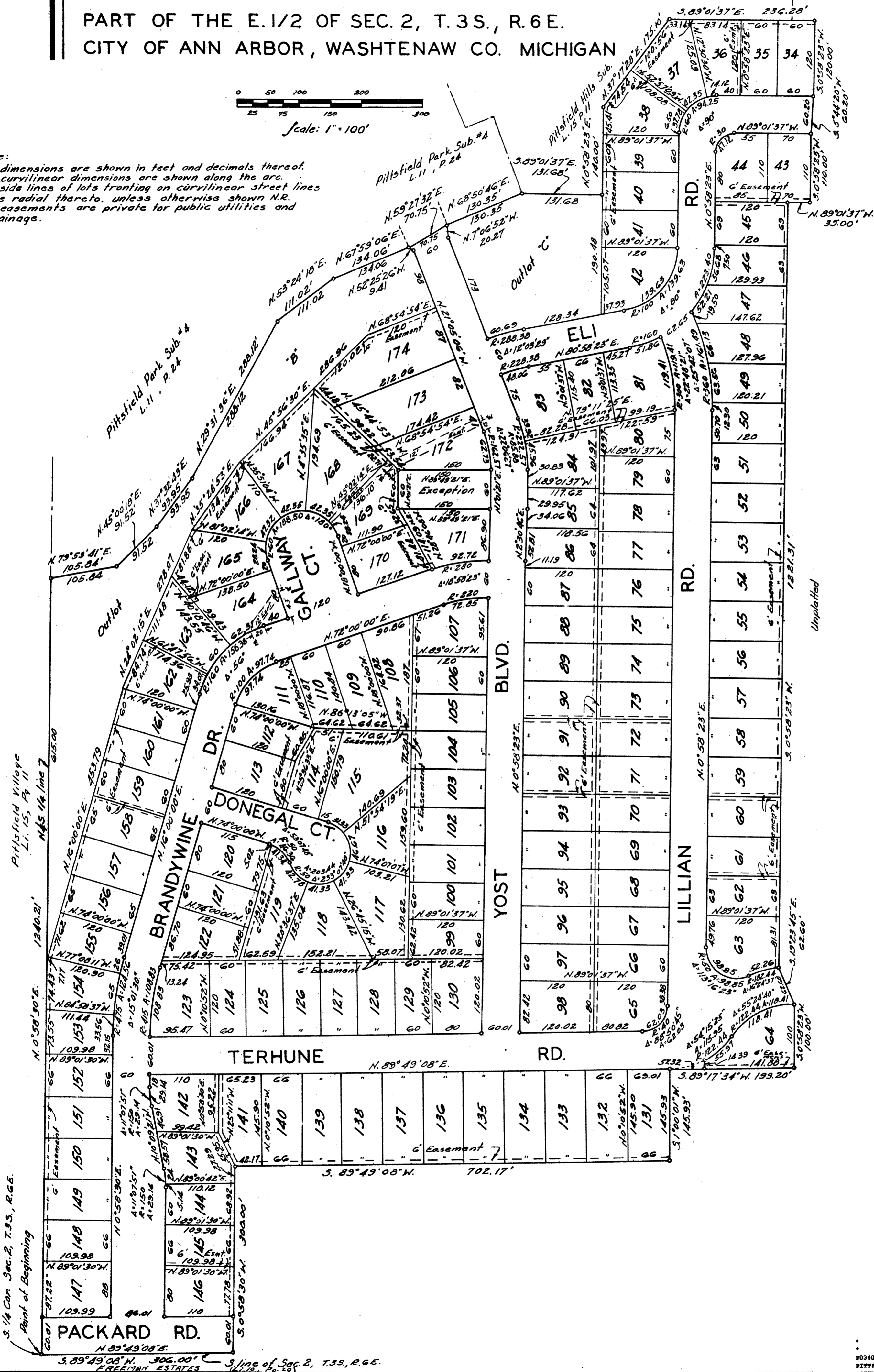


PITTSFIELD HILLS SUB. NO. 2

PART OF THE E. 1/2 OF SEC. 2, T. 3 S., R. 6 E.
CITY OF ANN ARBOR, WASHTENAW CO. MICHIGAN



Note:
 All dimensions are shown in feet and decimals thereof.
 All curvilinear dimensions are shown along the arc.
 All side lines of lots fronting on curvilinear street lines are radial thereto, unless otherwise shown N.R.
 All easements are private for public utilities and drainage.



PITTSFIELD HILLS SUB. NO. 2

PART OF THE E. 1/2 OF SEC. 2, T. 3 S., R. 6 E.
CITY OF ANN ARBOR, WASHTENAW CO., MICHIGAN

DEDICATION

KNOW ALL MEN BY THESE PRESENTS, That we, SYLVAN DEVELOPMENT COMPANY, a Michigan Corporation, by Bert L. Smokler, President, and David S. Snyder, Secretary, and NOBLE-HAAB CORPORATION, a Michigan Corporation, by Oscar W. Haab, President, and Albert J. Parker, Secretary, and Oscar W. Haab, Ethel M. Haab, his wife, Otto H. Haab, a single man, Adolph E. Bigge and Alma R. Bigge, his wife, as proprietors, have caused the land embraced in the annexed plat to be surveyed, laid out and platted to be known as "PITTSFIELD HILLS SUBDIVISION No. 2" of part of the E. 1/2 of Sec. 2, T. 3 S., R. 6 E., City of Ann Arbor, Washtenaw County, Michigan, and the streets and alleys as shown on said plat are hereby dedicated to the use of the public.

Signed and sealed in the presence of:

Constance Gaunt
Constance Gaunt, Witness
Stella Swyntak
Stella Swyntak, Witness

SYLVAN DEVELOPMENT COMPANY
Bert L. Smokler
Bert L. Smokler, President
David S. Snyder
David S. Snyder, Secretary

Adah E. Stovel
Adah E. Stovel, Witness
Joan Walz
Joan Walz, Witness

NOBLE-HAAB CORPORATION
Oscar W. Haab
Oscar W. Haab, President
Albert J. Parker
Albert J. Parker, Secretary

Witnesses to the signature of Oscar W. Haab individually and as Attorney in Fact:

Adah E. Stovel
Adah E. Stovel, Witness
Joan Walz
Joan Walz, Witness

Oscar W. Haab
Oscar W. Haab
Adolph E. Bigge
by Adolph E. Bigge by Oscar W. Haab, Atty. in fact
Oscar W. Haab, Attorney in Fact
Alma R. Bigge
by Alma R. Bigge by Oscar W. Haab, Atty. in fact
Oscar W. Haab, Attorney in Fact

Adah E. Stovel
Adah E. Stovel, Witness
Joan Walz
Joan Walz, Witness

Ethel M. Haab
Ethel M. Haab
Otto H. Haab
Otto H. Haab

ACKNOWLEDGMENT

STATE OF MICHIGAN } SS.
COUNTY OF WAYNE

On this 29th day of March, 1960, before me, a Notary Public in and for said County, personally came the above named BERT L. SMOKLER and DAVID S. SNYDER, to me personally known, who being each by me duly sworn, did say that they are the President and Secretary, respectively, of the SYLVAN DEVELOPMENT COMPANY, a Michigan corporation, and that the seal affixed to said instrument is the corporation seal of said corporation and that the said instrument was signed and sealed in behalf of said corporation by authority of its Board of Directors, and the said officers acknowledged the said instrument to be the free act and deed of said corporation.

My commission expires: May 7, 1962

Ruth A. Chesney
Ruth A. Chesney
Notary Public, Wayne County, Michigan

ACKNOWLEDGMENT

STATE OF MICHIGAN } SS.
COUNTY OF Washtenaw

On this 8 day of April, 1960, before me, a Notary Public in and for said County, personally came the above named OSCAR W. HAAB and ALBERT J. PARKER, to me personally known, who being each by me duly sworn, did say that they are the President and Secretary, respectively, of the NOBLE-HAAB CORPORATION, a Michigan corporation, and that the seal affixed to said instrument is the corporation seal of said corporation and that the said instrument was signed and sealed in behalf of said corporation by authority of its Board of Directors, and the said officers acknowledged the said instrument to be the free act and deed of said corporation.

My commission expires: 3/30/64

Adah E. Stovel
Adah E. Stovel
Notary Public
County, Michigan

ACKNOWLEDGMENT

STATE OF MICHIGAN } SS.
COUNTY OF Washtenaw

On this 8 day of April, 1960, before me, a Notary Public in and for said County, personally came the above named OSCAR W. HAAB, individually, and as attorney in fact for Adolph E. Bigge and Alma R. Bigge, ETHEL M. HAAB, and OTTO H. HAAB, known to me to be the persons who executed the above dedication, and acknowledged the same to be their free act and deed.

My commission expires: 3/20/64

Adah E. Stovel
Adah E. Stovel
Notary Public
County, Michigan

DESCRIPTION OF LAND PLATTED

THE LAND EMBRACED IN THE ANNEXED PLAT OF "PITTSFIELD HILLS SUBDIVISION No. 2" PART OF THE E. 1/2 OF SEC. 2, T. 3 S., R. 6 E., CITY OF ANN ARBOR, WASHTENAW CO., MICHIGAN, IS DESCRIBED AS FOLLOWS:

BEGINNING AT THE SOUTH 1/4 CORNER OF SEC. 2, T. 3 S., R. 6 E.; THENCE NORTH 00° 58' 30" EAST 1240.21 FEET; THENCE NORTH 79° 53' 41" EAST 105.84 FEET; THENCE NORTH 45° 00' 18" EAST 91.52 FEET; THENCE NORTH 37° 32' 43" EAST 93.95 FEET; THENCE NORTH 29° 31' 36" EAST 288.12 FEET; THENCE NORTH 53° 24' 18" EAST 111.02 FEET; THENCE NORTH 67° 59' 06" EAST 134.06 FEET; THENCE NORTH 59° 27' 32" EAST 70.75 FEET; THENCE NORTH 68° 50' 46" EAST 130.35 FEET; THENCE SOUTH 89° 01' 37" EAST 131.68 FEET; THENCE NORTH 00° 58' 23" EAST 140.00 FEET; THENCE NORTH 37° 17' 28" EAST 175.10 FEET; THENCE SOUTH 89° 01' 37" EAST 236.28 FEET; THENCE SOUTH 00° 58' 23" WEST 120.00 FEET; THENCE SOUTH 05° 44' 20" WEST 60.20 FEET; THENCE SOUTH 00° 58' 23" WEST 110.00 FEET; THENCE NORTH 89° 01' 37" WEST 35.00 FEET; THENCE SOUTH 00° 58' 23" WEST 1221.31 FEET; THENCE SOUTH 19° 23' 45" EAST 62.60 FEET; THENCE SOUTH 00° 58' 23" WEST 100.00 FEET; THENCE SOUTH 89° 17' 34" WEST 199.20 FEET; THENCE SOUTH 01° 00' 01" WEST 145.93 FEET; THENCE SOUTH 89° 49' 08" WEST 702.17 FEET; THENCE SOUTH 00° 58' 30" WEST 300.00 FEET; THENCE SOUTH 89° 49' 08" WEST 306.00 FEET TO THE POINT OF BEGINNING, CONTAINING 141 LOTS; AND EXCEPTING LOT 154 ATKINSON-DEACON "CHANDLER HEIGHTS" SUBDIVISION, LIBER 6, PAGE 29 OF WASHTENAW COUNTY PLATS, BEING FURTHER DESCRIBED AS COMMENCING AT THE SOUTH 1/4 CORNER OF SEC. 2, T. 3 S., R. 6 E. EAST; THENCE ALONG THE SOUTH LINE OF SAID SEC. 2, NORTH 89° 49' 08" EAST 705.50 FEET; THENCE N. 00° 58' 23" EAST 1261.57 FEET; THENCE NORTH 02° 30' 46" EAST 86.90 FEET TO THE PLACE OF BEGINNING; THENCE SOUTH 89° 49' 21" WEST 150 FEET; THENCE NORTH 1° 01' 21" EAST 60 FEET; THENCE NORTH 89° 49' 21" EAST 150 FEET; THENCE S. 1° 01' 21" WEST 60 FEET TO THE POINT OF BEGINNING AND CONTAINING 0.207 ACRES MORE OR LESS.

APPROVAL OF COUNTY PLAT BOARD

This plat was approved on the 24th day of May, 1960 by the Washtenaw County Plat Board.

Patricia Newkirk Hardy
Patricia Newkirk Hardy, County Register of Deeds

J. Martin Remp
J. Martin Remp, Auditor

John P. Cook
John P. Cook, Auditor

Herbert G. Loeffler
Herbert G. Loeffler, Auditor

John H. Flock
John H. Flock, County Drain Commissioner

CERTIFICATE OF APPROVAL BY THE CITY PLANNING COMMISSION

The plat was approved by the Planning Commission of the City of Ann Arbor, Michigan, at a meeting held on the 22 day of MARCH, 1960.

Dean W. Costen
Dean W. Costen, Chairman

John D. Paul
John D. Paul, Secretary

CERTIFICATE OF MUNICIPAL APPROVAL

This plat was approved by the Common Council of the City of Ann Arbor at a meeting held March 1960 and that the width of lots in compliance with requirements of Section 30, Act 172, of 1929, as amended.

Fred J. Cooper
Fred J. Cooper, Clerk

SURVEYOR'S CERTIFICATE

I hereby certify that the plat hereon delineated is a correct one and that permanent metal monuments consisting of bars not less than one-half inch in diameter and 36 inches in length, or shorter bars of not less than one-half inch in diameter lapped over each other at least 6 inches with an over-all length of not less than 36 inches, encased in a concrete cylinder at least 4 inches in diameter and 36 inches in depth have been placed at points marked thus (o) as thereon shown at all angles in the boundaries of the land platted, at all the intersections of streets, intersections of alleys, or of streets and alleys, and at the intersections of streets and alleys with the boundaries of the plat as shown on said plat.

Eugene F. Zimet
Eugene F. Zimet
Registered Professional Engineer
Number 9209

COUNTY TREASURER'S CERTIFICATE

Office of County Treasurer, Washtenaw County

I hereby certify, that there are no tax liens or titles held by the State on the lands described hereon, and that there are no tax liens or titles held by individuals on said lands, for the five years preceding the 20th day of May, 1960, and that the taxes for said period of five years are all paid, as shown by the records of this office.

This certificate does not apply to taxes, if any, now in process of collection by township, city or village collecting officers.

W. F. Verner
W. F. Verner, County Treasurer

REGISTRY OFFICE
Washtenaw County
Plat of Pittsfield Hills
Sub. No. 2
was Recorded this 25th day of May A.D. 1960 at 4:18 o'clock
P.M. in Liber 15 of Plats
Book 18 of 19
Patricia Newkirk Hardy
Register of Deeds

I hereby certify this copy is a true copy of map or plat forwarded the Register of deeds for recording.
Date May 25, 1960
FILED IN AUDITOR GENERAL'S DEPT.
Date May 31, 1960
EXAMINED AND APPROVED
Date May 25, 1960
Otis M. Smith
OTIS M. SMITH
AUDITOR GENERAL
By D. L. MacEntyre
D. L. MacEntyre, Plat Engineer