

WALDEN WOODS

PART OF THE SW 1/4 OF SECTION NO. 3
T-3-S R-6-E PITTSFIELD TWP. WASHTENAW
COUNTY, MICHIGAN.

See Requirements, Sec. 1, Rev. 781, Page 522
Incoming Partitions

RM
-5-48

DEDICATION
KNOW ALL MEN BY THESE PRESENTS, that we
Michigan, a corporation by Leo P. Meyers,
Treasurer and Winifred E. Meyers, V. Pres. &
Secretary, as proprietor, have caused the land embraced in the annexed plat to be surveyed, laid out and platted to be known as
"Walden Woods", located in
the SW 1/4 of the SW 1/4 of Sec. 3, T. 3 S., R. 6 E., Pittsfield
Twp., Washtenaw County, Michigan.

and that the streets and alleys as shown on said plat are hereby dedicated to
the use of the public.
Signed and Sealed in
the presence of:
Ann Arbor Development Co.,
Leo P. Meyers, President
Winifred E. Meyers, Secretary

ACKNOWLEDGMENT
STATE OF Michigan)
County of Washtenaw) ss.
On this 7th day of April, A.D. 1948, before
me, a Notary Public in and for
said county appeared Leo P. Meyers and Winifred E. Meyers,
to me personally known, who being each by me duly sworn did say that they are the
President and Secretary respectively of the Ann Arbor Development Co.,
a corporation organized under the laws of the State of Michigan,
and that the said instrument was signed and sealed in behalf of said corporation by authority
of its Board of Directors and the said Leo P. Meyers and
Winifred E. Meyers acknowledged said
instrument to be the free act and deed of said corporation.

Bernice Phillips
Notary Public
My Commission expires...

DESCRIPTION OF LAND PLATTED
The land embraced in the annexed plat of
"Walden Woods", located in the SW 1/4 of the SW 1/4 of
Sec. 3, T. 3 S., R. 6 E., Pittsfield Twp., Washtenaw Co.,
Michigan,
is described as follows:
Commencing at the SW corner of said Section 3, thence
N. 87° 31' E., 178.37 feet in the south line of Section 3 to the
point of beginning of this description;
thence N. 87° 31' E., 517.53 feet in the south line of Sections,
thence N. 2° 19' 30" W., 444.4 feet,
thence N. 52° 53' W., 461.11 feet,
thence S. 37° 07' W., 104.1 feet,
thence S. 0° 45' 40" W., 198.82 feet,
thence S. 87° 31' W., 14.60 feet,
thence S. 0° 44' 30" W., 100.12 feet,
thence S. 87° 31' W., 45.43 feet
thence S. 0° 43' 40" W., 360.43 feet to the point of beginning.

COUNTY TREASURER'S CERTIFICATE
Office of County Treasurer, Washtenaw County,
I hereby certify that there are no tax liens or titles held by the State on the lands described hereon, and that there are no liens or titles held by individuals on said land,
for the five years preceding the 19th day of April, 1948, and that the taxes for said period of
five years are all paid, as shown by the records of this office, except
This certificate does not apply to taxes, if any, now in process of collection by township,
city or village collecting officers.
Clyde Fleming, County Treasurer

Examined and Approved
April 5, 1948
Mable E. Furry, Deputy Auditor General

RESOLUTION OF DIRECTORS
Washtenaw County
RESOLVED for record the 7th day of April, A.D. 1948
at 11:40 o'clock A.M. and recorded in Liber 70 of Plats on page 522
Allen A. Bergman, Supervisor of County

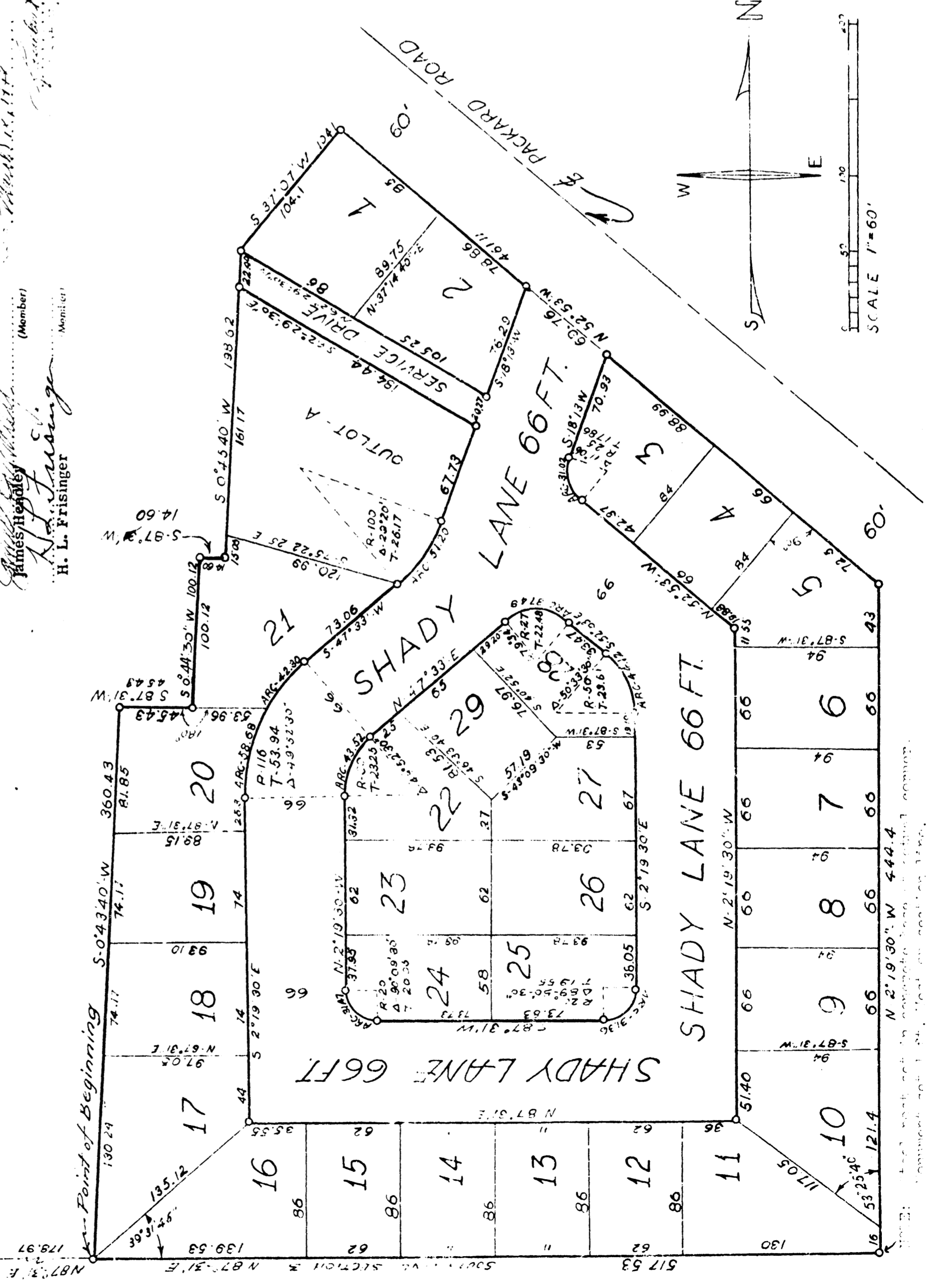
APPROVAL BY BOARD OF COUNTY AUDITORS
Approved by the Board of County Auditors of Washtenaw County, Michigan, this 7th day of April, 1948.
J. Martin Rempp, (Chairman)
L. O. Cushing
John E. Walz

SURVEYOR'S CERTIFICATE
I hereby certify that the plat hereon delineated is a correct one and that permanent metal monuments consisting of bars not less than one-half inch in diameter and 48 inches in length, or shorter bars of not less than one-half inch in diameter tapered over each other at least 6 inches with an over-all length of not less than 48 inches, encased in a concrete cylinder at least 4 inches in diameter and 48 inches in depth have been placed at points marked thus (.....) as hereon shown at all angles in the boundaries of the land platted, at all the intersections of streets, intersections of alleys, or of streets and alleys, and at the intersections of streets and alleys with the boundaries of the plat as shown on said plat.
Alton D. Stimis, Registered Land Surveyor

APPROVAL BY BOARD OF COUNTY ROAD COMMISSIONERS
This plat has been examined and was approved on the 19th day of April, 1948, by the County Board of Road Commissioners.
Geo. Gill, (Chairman)
James Hendley, (Member)
H. L. Frisinger, (Member)



SW section, Corner, SEC 3 T3S, R6E



10 11 12 13 14 15 16 17 18 19 20 21 22 23 24 25 26 27
N 2° 19' 30" W 444.4
S 87° 31' W 45.43
S 0° 43' 40" W 360.43
S 87° 31' W 14.60
S 0° 44' 30" W 100.12
S 37° 07' W 104.1
N 52° 53' W 461.11
N 2° 19' 30" W 444.4
N 87° 31' E 517.53
N 87° 31' E 178.37