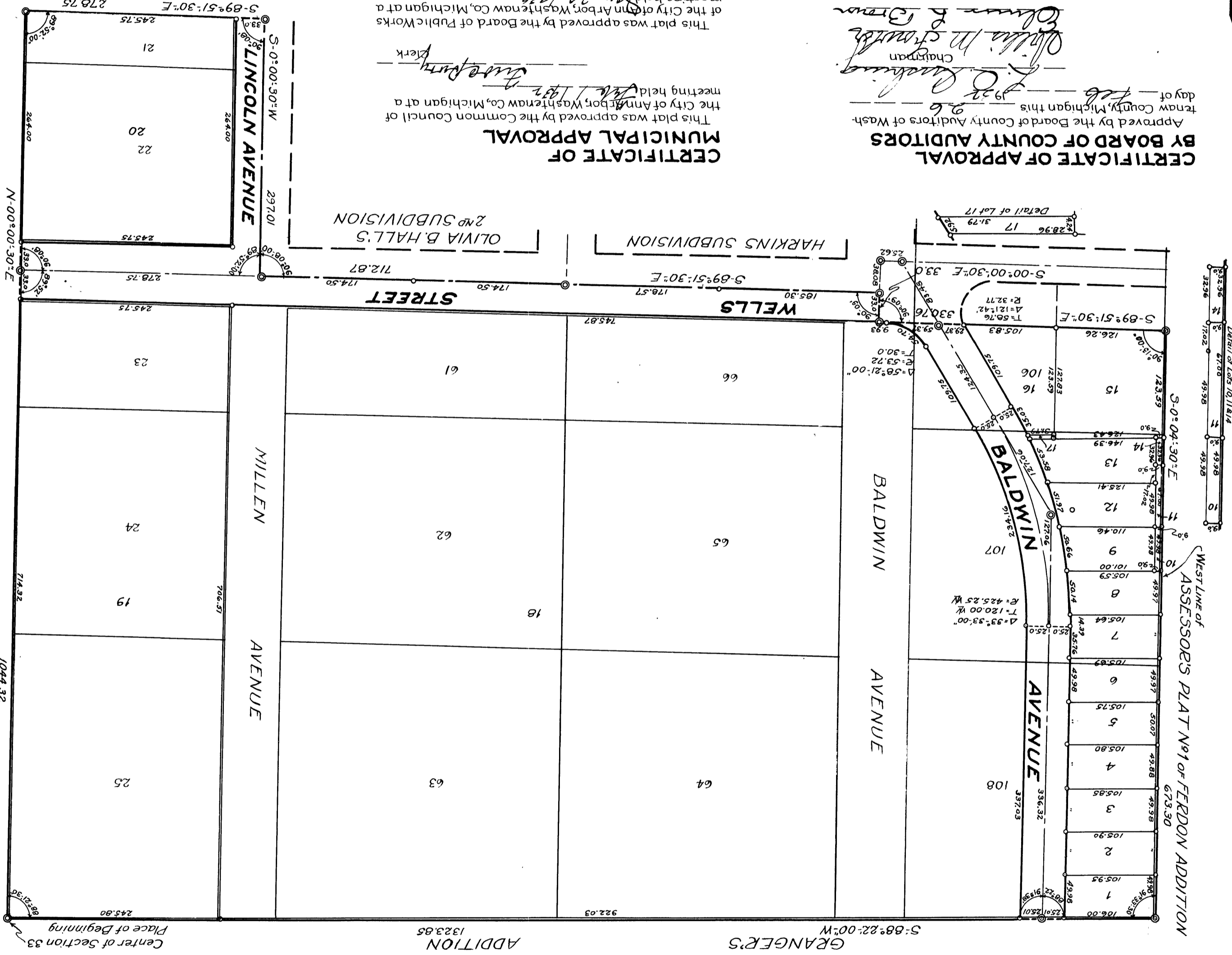


"ASSESSOR'S PLAT No 24
CITY OF ANN ARBOR,
WASHTENAW CO, MICHIGAN.

SCALE 1"=100'

REPLAT OF PART OF LOT 21, LOTS 22 THRU 25, 61 THRU 66, PART OF LOT 106, LOTS 107 AND 108 OF J.D. BALDWIN'S 3rd ADDITION??



Washburn
 Assessors Plat No 24
 Mar 9 9 45
 John D. Cummings
 Mar 17-1882
 Mr B. Sturges
 Mar 17-1882
 Mr J. Sturges
 Mar 24-1882

CERTIFICATE OF APPROVAL
 BY BOARD OF COUNTY AUDITORS
 Approved by the Board of County Auditors of Wash-
 tenaw County, Michigan this _____ day of _____ 19__
 Chairman
 Clerk

CERTIFICATE OF MUNICIPAL APPROVAL
 This plat was approved by the Common Council of
 the City of Ann Arbor, Washtenaw Co., Michigan at a
 meeting held _____ day of _____ 19__
 Clerk
 This plat was approved by the Board of Public Works
 of the City of Ann Arbor, Washtenaw Co., Michigan at a
 meeting held _____ day of _____ 19__
 Clerk

SURVEYOR'S CERTIFICATE
 I hereby certify that the Plat hereon delineated is a correct one
 and that permanent metal monuments of not less than one inch in
 diameter and fifteen inches in length set in a concrete base at
 least four inches in diameter and forty-eight inches in depth have
 been placed at all points marked thus: @ as thereon shown at
 all angles in the boundaries of the land platted, at all the inter-
 sections of streets, intersections of alleys, or of streets and alleys
 with the boundaries of the plat as shown on said plat.
 Registered Civil Engineer

DESCRIPTION
 Commencing at the Center of Section 33,
 T. 2. S., R. 6. E., Washtenaw County, Michigan for a
 Place of Beginning; thence N-0°00'-30"E along
 the East Line of Addition 1044.32 feet;
 thence S-09°51'-30"E along the South Line of Olivia
 B. Hall's 2nd Subdivision 276.75 feet to its inter-
 section with the Center Line of Lincoln Avenue;
 thence S-0°00'-30"W along the Center Line of Lincoln
 Avenue 297.01 feet to its intersection with the Center
 Line of Wells Street; thence S-89°51'-30"E along the
 Center Line of Wells Street 712.87 feet to its inter-
 section with the Center Line of Baldwin Avenue;
 thence S-0°00'-30"E, 33.0 feet to the South Line of
 Wells Street; thence S-89°51'-30"E, 330.76 feet to the
 West Line of Assessor's Plat No 1 of Ferdon Addition,
 673.30 feet to the North Line of Granger's Addition,
 thence S-68°22'-00"W along the North Line of Grang-
 er's Addition 1323.85 feet to the Place of Beginning.

ACKNOWLEDGEMENT
 On this _____ day of _____ 19__
 COUNTY OF WASHTENAW,
 STATE OF MICHIGAN,
 I, _____
 Notary Public in and for Washtenaw Co.,
 Michigan.
 My Commission expires _____

DEDICATION
 KNOW ALL MEN BY THESE PRESENTS: That I her-
 bert W. Crispin, Assessor of the City of Ann Arbor,
 Washtenaw Co., Michigan, by virtue of authority in me
 vested by Section 51, Act 172 of 1929, having been
 duly authorized by the Common Council of the City
 of Ann Arbor, Washtenaw Michigan have caused
 the land described in the annexed plat to be surveyed,
 laid out and platted to be known as "Assessor's Plat
 No 24. Replat of Lot 21, Lots 22 thru 25, 61 thru
 66, Part of Lot 106, Lots 107 and 108 of J.D. Baldwin's
 3rd Addition in the City of Ann Arbor, Washtenaw
 County, Michigan, being a part of Section 33, T. 2. S.,
 R. 6. E., Washtenaw Co., Michigan and that the streets
 and alleys as shown on said plat are hereby de-
 dicated to the use of the public.
 Assessor of the City of Ann Arbor,
 Washtenaw Co., Michigan.
 Witnesses

1 OF 1
 03/18/1932
 ASSessor's PLAT No. 24
 12881.9 2881.8

Good