

Restrictions: See Order 7 of 1924, page 612

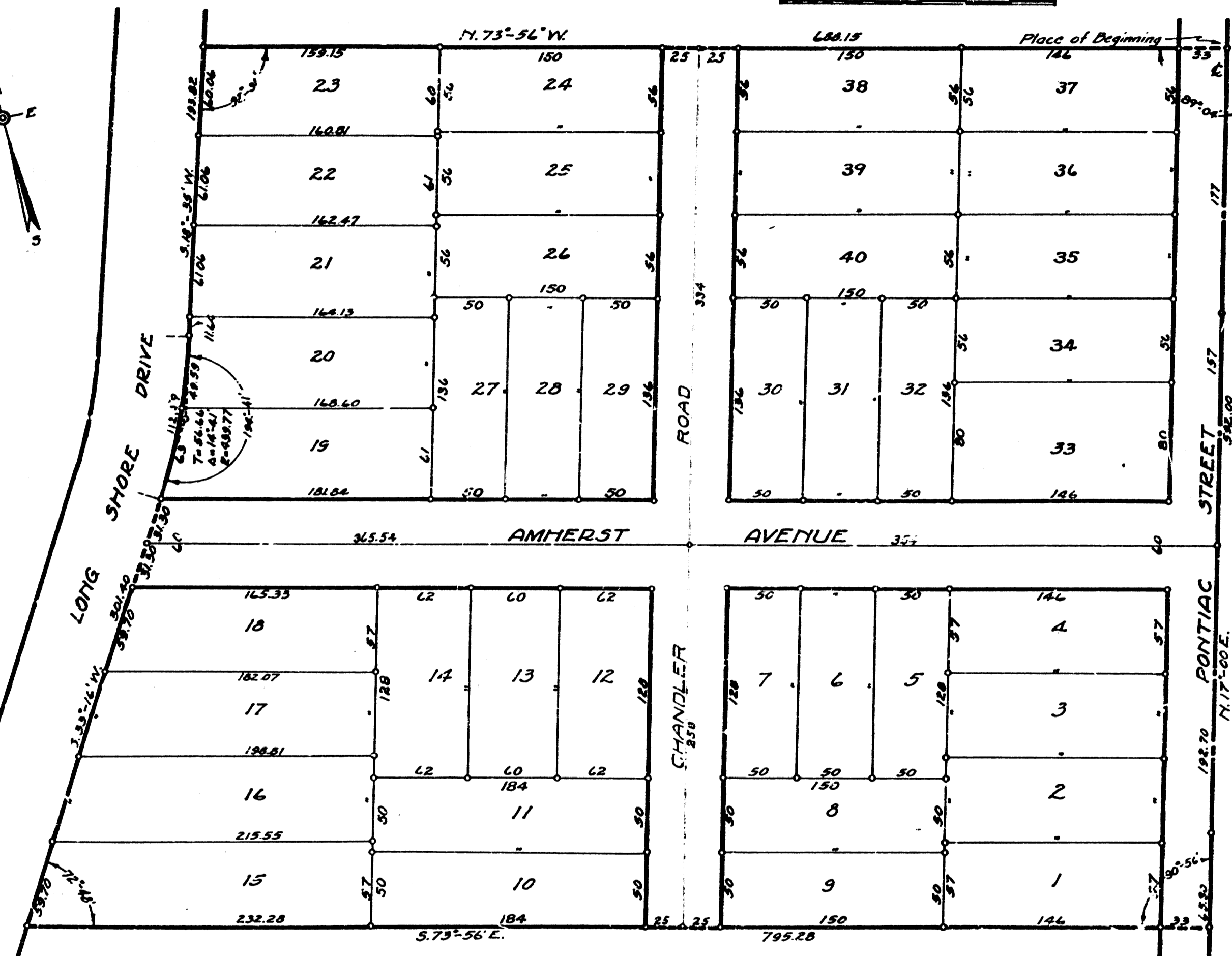
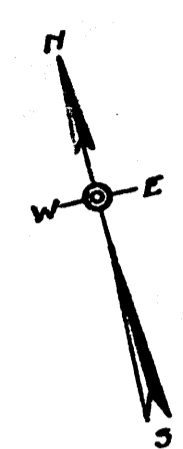
LONG SHORE HEIGHTS

A SUBDIVISION OF PART OF THE
NORTHWEST ONE-QUARTER OF SECTION 21,
IN THE CITY OF ANN ARBOR,
WASHTENAW COUNTY, MICHIGAN.

44
Examined and Approved
Jan 5-1925
J. P. Howard
Deputy Auditor General

Note: All dimensions are given
in feet and decimals thereof

Scale: One Inch = Sixty Feet



DESCRIPTION.
The land embraced in the annexed plat of Long Shore Heights Subdivision, part of the northwest one-quarter of section 21, in the City of Ann Arbor, Washtenaw County, Michigan is described as follows:—Commencing at a point in the center line of Pontiac Street 177 feet N. 17° 00' E. of its intersection with the north east-and-west one-eighth line of section 21, Town 2-South, Range 4-East, Meridian of Michigan, thence N. 73° 56' W 688.15 feet, thence S 18° 35' W 193.82 feet, thence along the arc of a circular curve to the right of radius 439.77 feet through a central angle of 142° 41' to the point of tangency of said curve, thence S 33° 16' W 301.40 feet, thence S 73° 56' E 795.28 feet, thence N. 17° 00' E. 592.00 feet to the place of beginning

TAX CERTIFICATE
OFFICE OF THE COUNTY TREASURER, WASHTENAW CO., MICH.
I hereby certify that there are no tax liens or titles held by the State on the lands described above and that there are no tax liens or titles held by individuals on said lands for the five years preceding the 23rd day of October, 1924, and that the taxes for said period of five years are fully paid as shown by the records of this office.
Thos. E. Bureau
County Treasurer

SURVEYORS CERTIFICATE
I hereby certify that the plat hereon delineated is a correct one, and that permanent monuments consisting of iron pipes one-half inch or more in diameter and eighteen inches or more in length have been planted at points marked thereon as thereon of all angles and boundaries of the land platted and all intersections of streets, and streets and alleys
J. H. Utterall
Registered Civil Engineer

CERTIFICATE OF APPROVAL
BY THE BOARD OF COUNTY AUDITORS
This plat was approved by the Board of County Auditors of Washtenaw County, Michigan, this 1 day of Jan, 1924
Chairman: Charles L. Bureau
Auditor: Samuel A. Howard

DEDICATION.
KNOW ALL MEN BY THESE PRESENTS, That we, Theron S. Langford and Katrina Langford, his wife as proprietors have caused the land embraced in the annexed plat to be surveyed, laid out and platted, to be known as, LONG SHORE HEIGHTS, a subdivision of part of the northwest one-quarter of section 21, in the City of Ann Arbor, Washtenaw County, Michigan, and that the streets and alleys as shown on said plat are hereby dedicated to the use of the public
Signed and sealed in the presence of
Theron S. Langford (L.S.)
Katrina S. Langford (L.S.)
Notary Public, Washtenaw Co., Mich.

CERTIFICATE OF APPROVAL
BY THE BOARD OF PUBLIC WORKS
This plat was approved by the Board of Public Works of the City of Ann Arbor, Washtenaw County, Michigan, at a meeting held July 19, 1924
Chairman: W. B. Reynolds

CERTIFICATE OF APPROVAL
BY THE COMMON COUNCIL.
This plat was approved by the Common Council of the City of Ann Arbor, Washtenaw County, Michigan, at a meeting held October 20, 1924
Clerk: W. B. Reynolds

STATE OF MICHIGAN)
County of Washtenaw) ss
On this 23 day of October, 1924, before me, a Notary Public in and for said county, personally came the above named Theron S. Langford and Katrina S. Langford his wife, who are to be the persons who executed the above dedication, and acknowledged the same to be their free act and deed
My Commission expires Dec 15, 1926
Notary Public, Washtenaw Co., Mich.

REGISTER OF DEEDS
Washtenaw County
RECEIVED for Record, the 6
day of January, 1925
at 3:30 o'clock P. M. and recorded
in 5 of Plate on Page 44
P. H. Townsend
Register of Deeds